

# SBB 14

## SIGNAL BREAKOUT BOX

### FEATURES

---

- Two 14-Pin Connectors: provides an in-line connection between a Magtrol DSP Controller and a Dynamometer or a Torque Transducer
- Four BNC Connectors: provides easy access to Tach A, Tach B, torque and index signals for connecting to an oscilloscope or other data acquisition (DAQ) device
- Sturdy Assembly: packaged in a shielded aluminum case with metal mounting flanges
- An encoder input is provided for connecting high resolution encoders
- An internal jumper is provided for supplying a regulated 24 VDC supply to a transducer
- A toggle switch has been added to provide switching between torque transducer and an external encoder

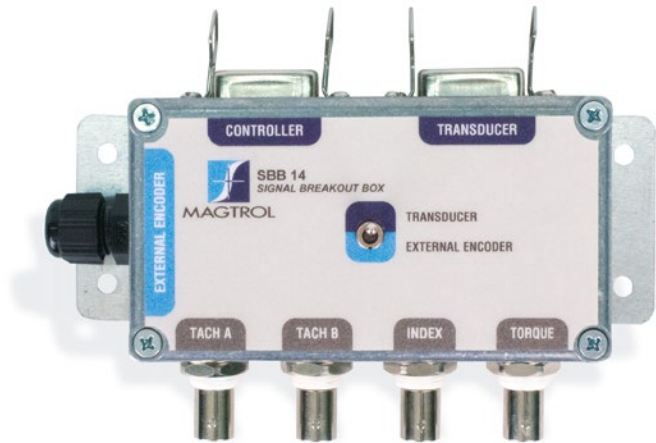


Fig. 1: SBB 14 Signal Breakout Box

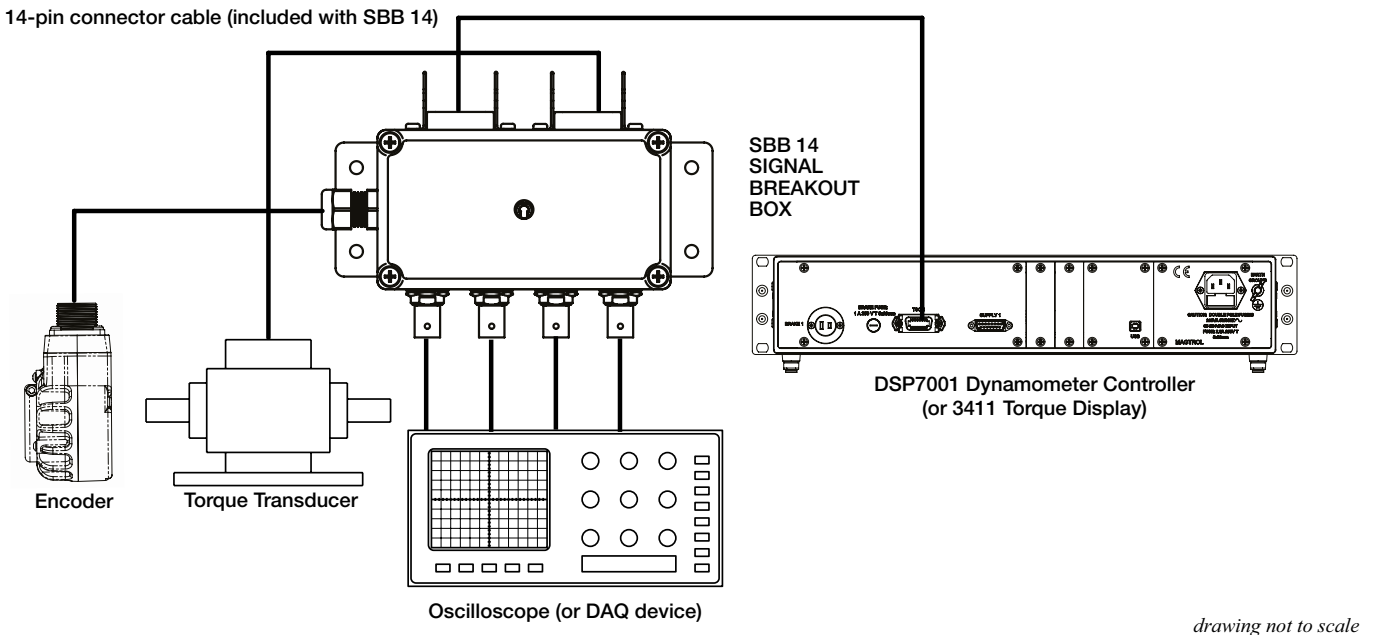
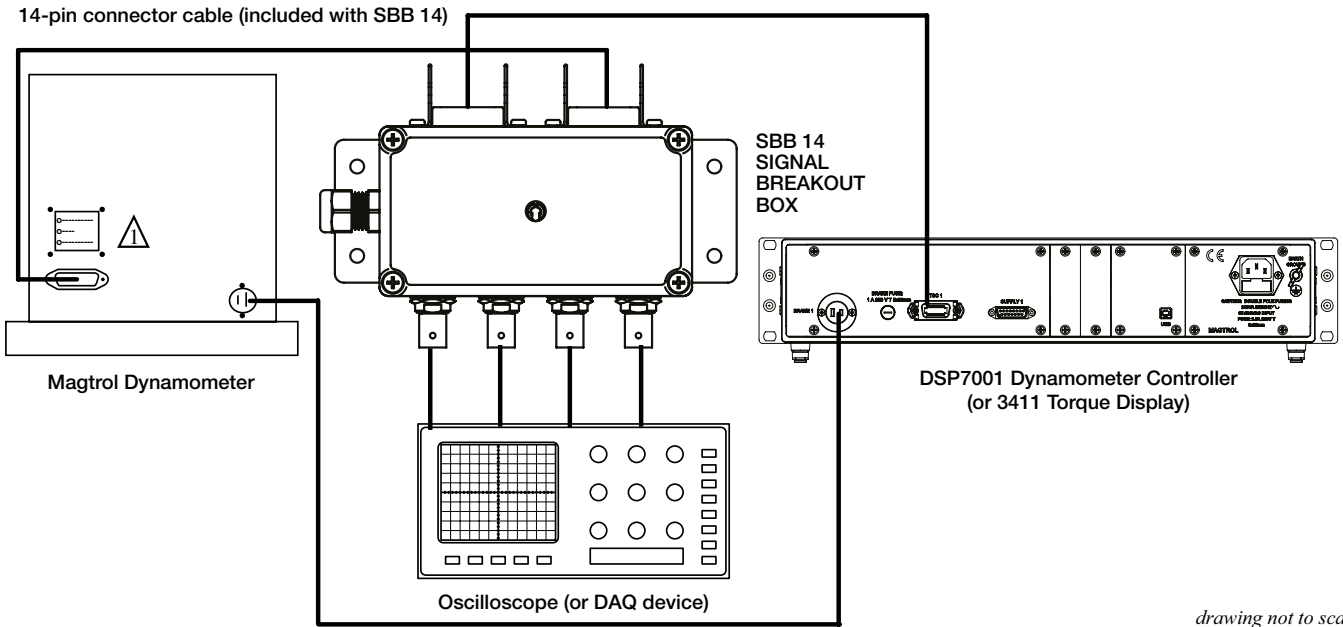
### DESCRIPTION

---

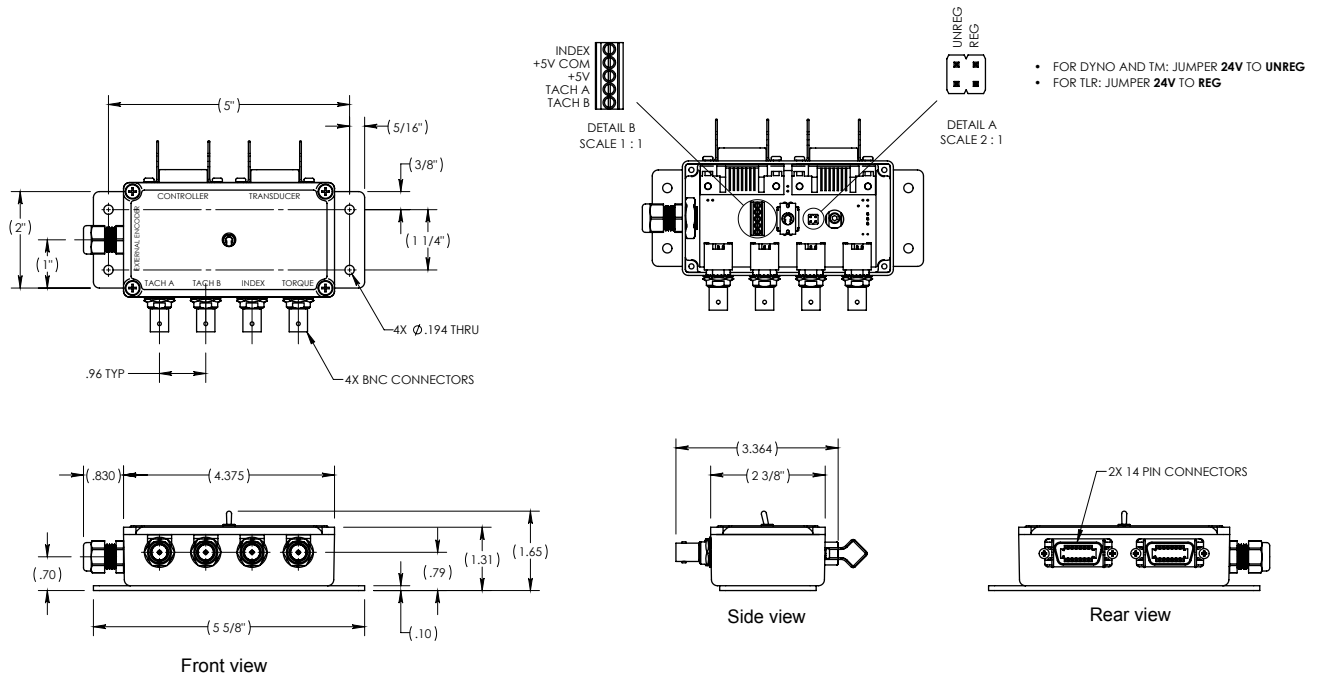
Magtrol's SBB 14 Signal Breakout Box is designed to assist in the monitoring of speed, torque and index signals obtained from either a Magtrol dynamometer or torque transducer. The easy-to-use SBB 14 is simply inserted in series between a Magtrol controller and any Magtrol dynamometer or torque transducer. Connections are made via 14-pin signal cables.

Speed, torque and index signals are then outputted through BNC connectors to an oscilloscope or other DAQ instrumentation device. A toggle switch is now provided to allow switching between a torque transducer and an external encoder wired to the encoder input. The SBB 14 Signal Breakout Box is a convenient and reliable accessory that reduces the necessary wiring required for signal monitoring.

SYSTEM CONFIGURATIONS



**DIMENSIONS**



**ORDERING INFORMATION**

The SBB 14 Signal Breakout Box is supplied with a 14-pin, 1.5 meter dynamometer/transducer patch cable.

**OPTIONAL MOUNTING PLATE**

DESCRIPTION	PART NUMBER
Baseplate for 8 mm t-slot width (used on pt material)	006925
Baseplate for 10 mm t-slot width (used on 700 Series Dynamometers)	007100
Baseplate for 12 mm t-slot width (used on 800 Series Dynamometers)	007101