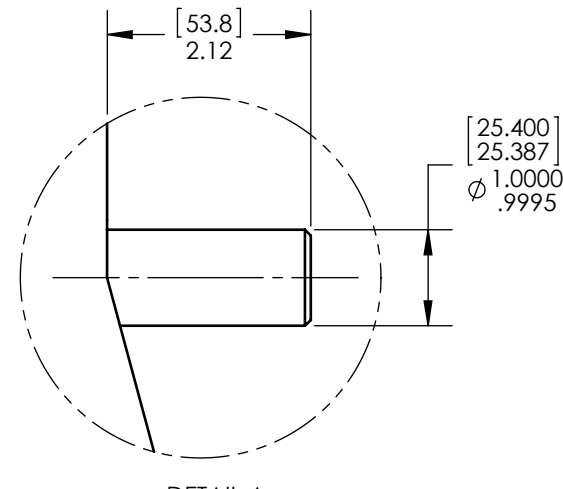
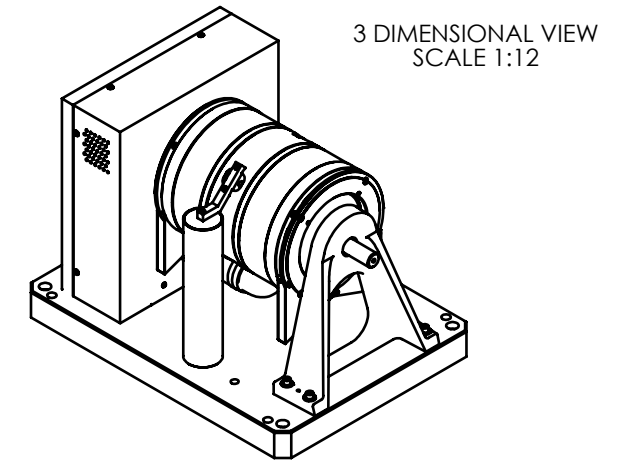
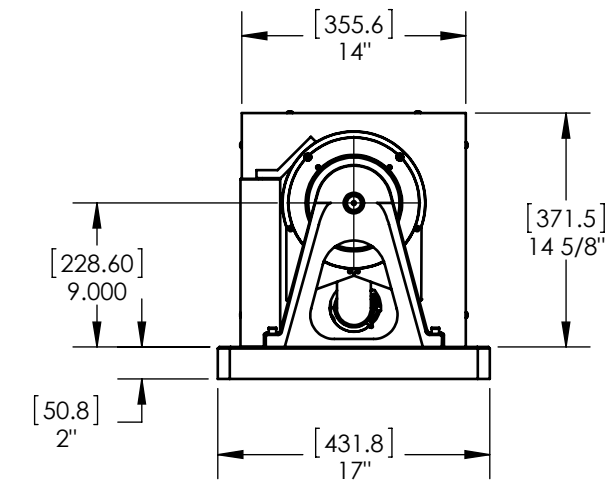
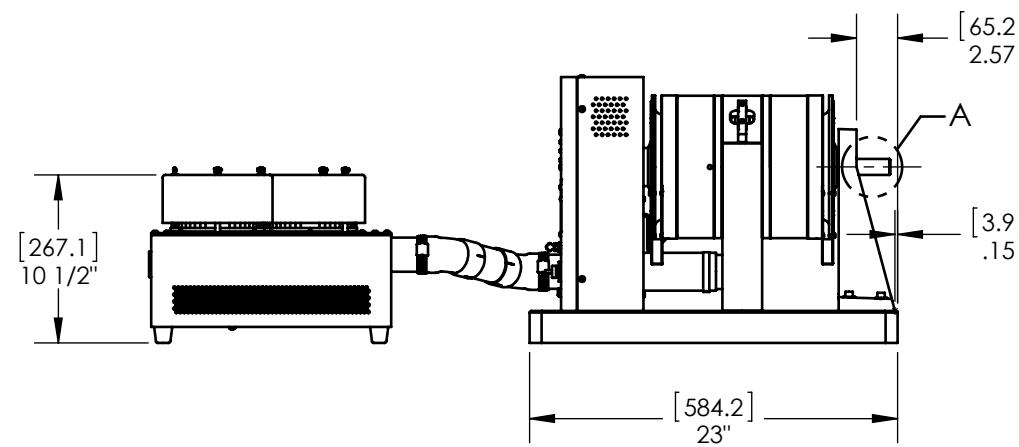
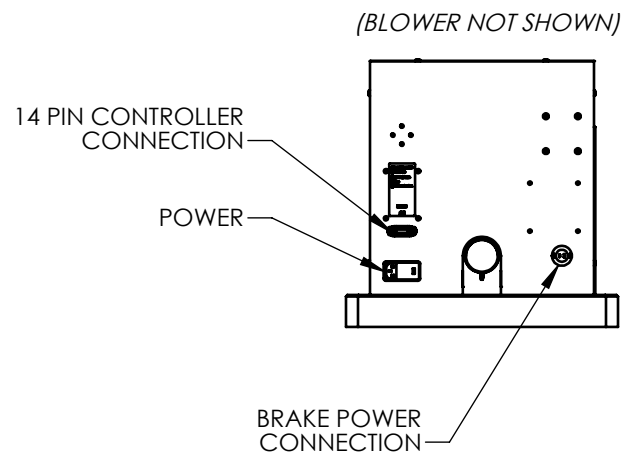
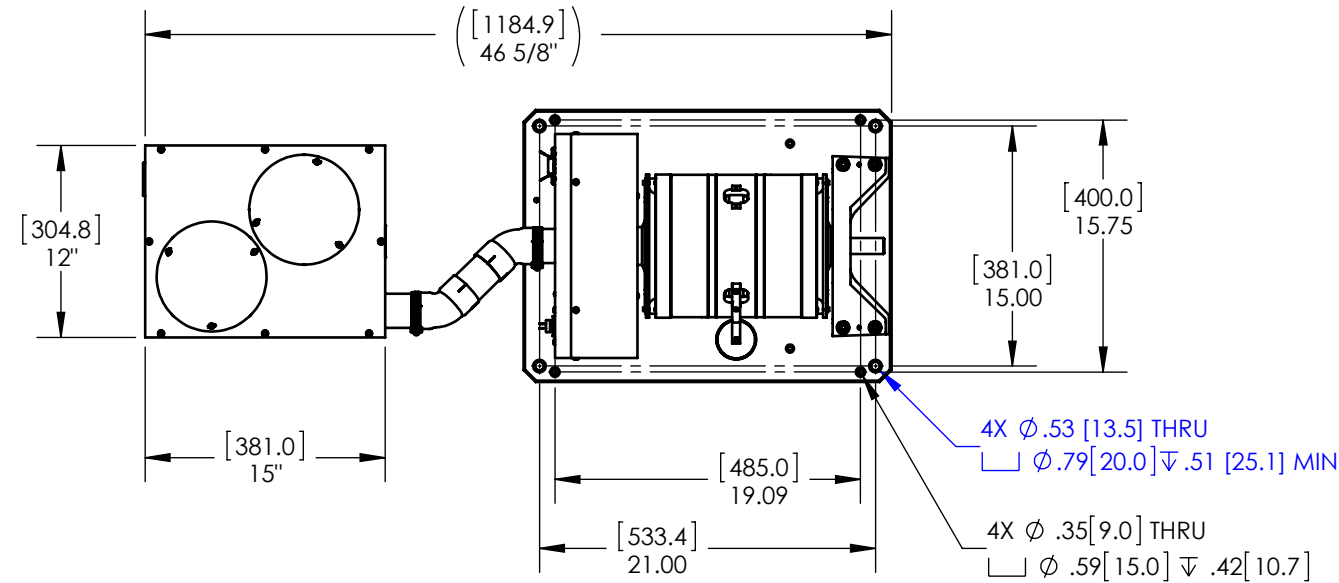


MODEL	TORQUE MEASURE UNIT CODE (-XXX)	STOCK CODE	MAXIMUM TORQUE RANGE	DRAG TORQUE DE-ENERGIZED AT 1000 RPM	NOMINAL INPUT INERTIA		MAXIMUM POWER		MAXIMUM SPEED (RPM)	COOLING
					(lb•ft•s ²)	(kg•m ²)	5-MINUTE (Watts)	CONTINUOUS (Watts)		
HD-815-XXX-0100	5N	006793	28.0 N m	0.14 N m	8.81 x 10 ⁻³	1.19 x 10 ⁻²	7,000	6,000	12,000	BLOWER (INCLUDED)
	5NA	006794								
	6N	006002	250 lb in	1.2 lb in						
	6NA	006004								
	7N	006006	280 kg cm	1.5 kg cm						
	7NA	006008								
	8N	006010	28.0 N m	0.14 N m						
	8NA	006012								

SOLID MODEL AVAILABLE



DETAIL A
SCALE 1 : 2



INSTALLATION DRAWING

NOTE: DIMENSIONS IN [] ARE mm.

MATERIAL:	-	DESIGN	-	-	MAGTROL INC. 70 GARDENVILLE PKWY, W. BUFFALO, NEW YORK 14224-1322	TITLE: HD-815-0100 SHORT BASE DYNAMOMETER
FINISH:	-	DRAWN	JEF	06/04/12		
THIRD ANGLE PROJECTION		CHECKED	AJC	07/02/12	UNLESS OTHERWISE SPECIFIED: DIMENSIONS ARE IN INCHES DIAMETERS CONCENTRIC: .003 TIR FACES PERPENDICULAR: .003 INTERPRETATION PER ASME Y14.5M-1994 REMOVE ALL BURRS AND BREAK SHARP EDGES .005/.010 X 45° INSIDE CORNERS TO BE R .02 MAX TOLERANCES: .XX ± .01 X/Y ± 1/64" .XXX ± .005 X° ± 1° SURFACE FINISH 125 RMS MAX	USED ON: - SIMILAR TO: - DWG NO: HD-815-0100
THIS DRAWING AND SPECIFICATION CONTAINS PROPRIETARY INFORMATION TO MAGTROL INC. ANY DISCLOSURE OR REPRODUCTION OF THIS DOCUMENT WITHOUT WRITTEN AUTHORIZATION FROM MAGTROL INC. IS EXPRESSLY PROHIBITED					REV A	
		SIZE	SCALE	SHEET #		
		B	1:12			