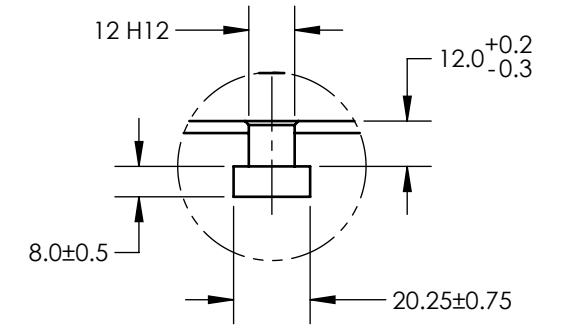
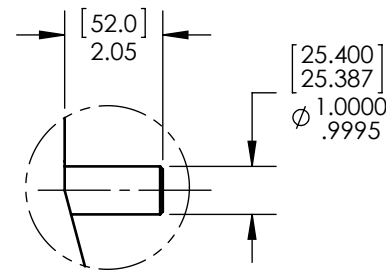


MODEL	TORQUE MEASURE UNIT CODE (-XXX)	STOCK CODE	MAXIMUM TORQUE RANGE	DRAG TORQUE DE-ENERGIZED AT 1000 RPM	NOMINAL INPUT INERTIA		MAXIMUM POWER		MAXIMUM SPEED (RPM)	COOLING
					(lb•ft•s <sup>2</sup> )	(kg•m <sup>2</sup> )	5-MINUTE (Watts)	CONTINUOUS (Watts)		
HD-810-XXX-0200	5N	007227	14.00 N m	0.10 N m	4.43 x 10 <sup>-3</sup>	6.01 x 10 <sup>-3</sup>	3,500	3,000	12,000	BLOWER
	5NA	007228								
	6N	006036	125.0 lb in	0.8 lb in						
	6NA	006037								
	7N	006038	140.0 kg cm	1.0 kg cm						
	7NA	006039								
	8N	006040	14.00 N m	0.10 N m						
	8NA	006041								

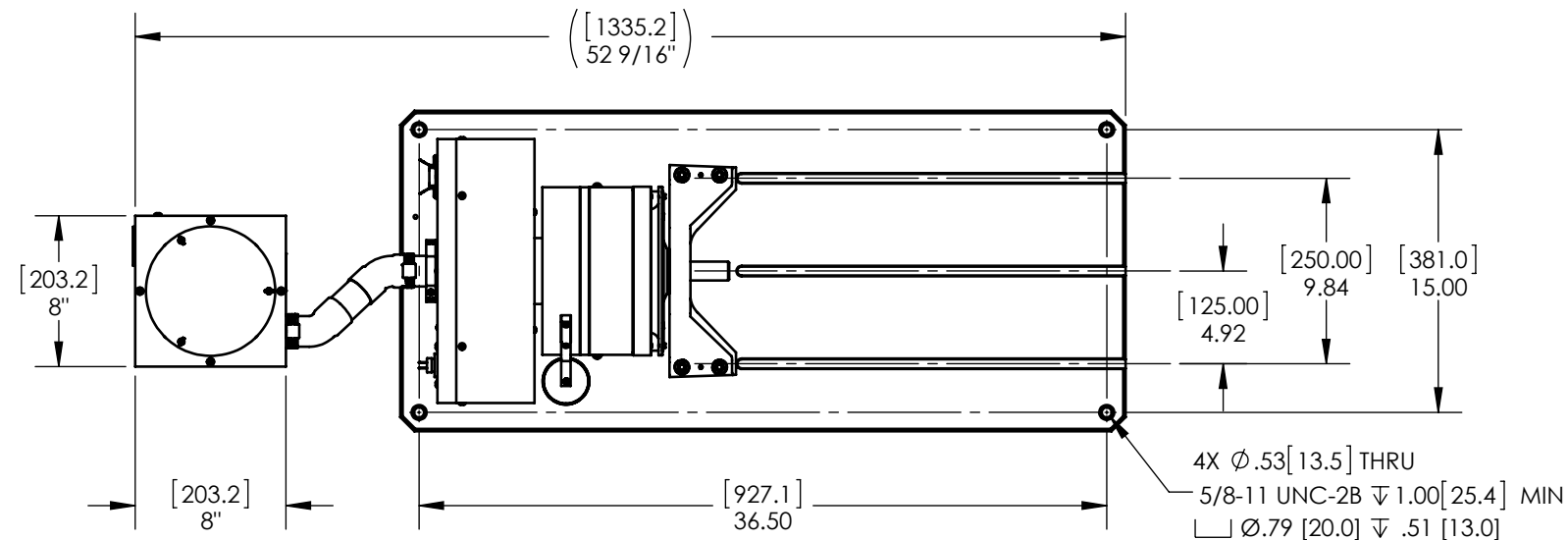
**SOLID MODEL AVAILABLE**



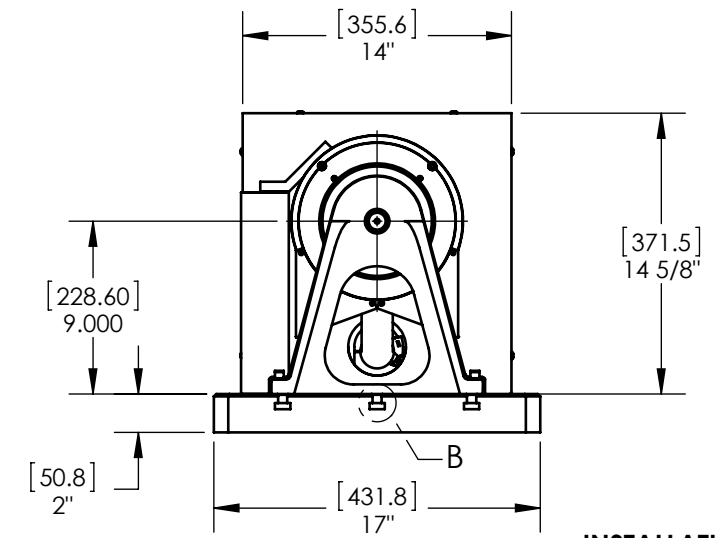
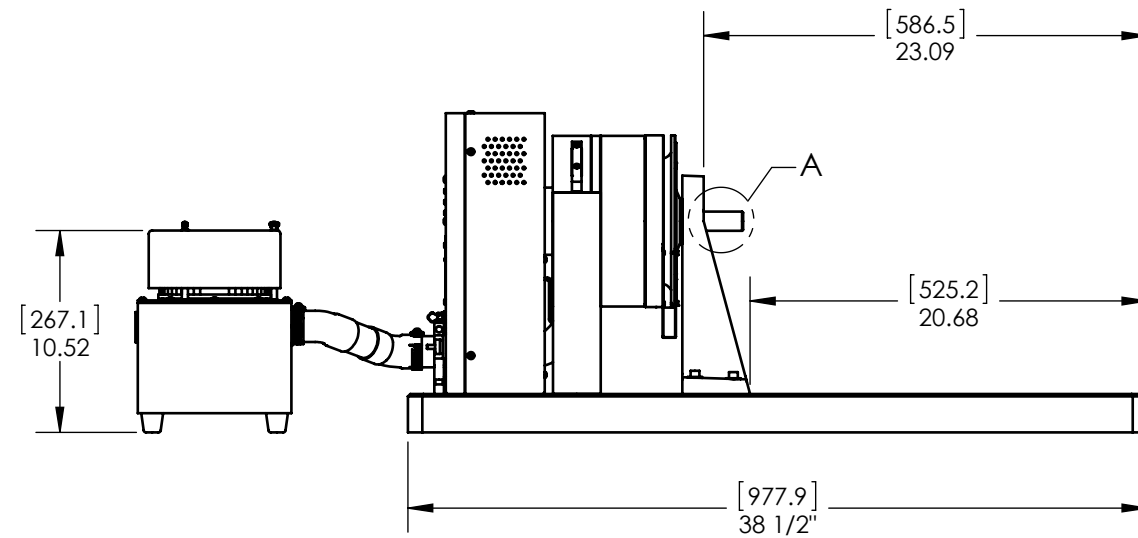
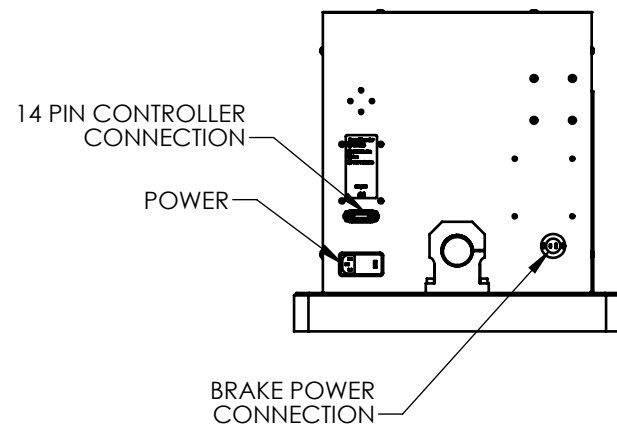
3X METRIC T-SLOT  
DETAIL B  
SCALE 1 : 2



DETAIL A  
SCALE 1 : 4




(BLOWER NOT SHOWN)



**INSTALLATION DRAWING**

NOTE: DIMENSIONS IN [ ] ARE mm.

MATERIAL:	DESIGN	-	-	 <b>MAGTROL INC.</b> 70 GARDENVILLE PKWY, W. BUFFALO, NEW YORK 14224-1322
FINISH:	DRAWN	AJC	05/19/15	
THIRD ANGLE PROJECTION	CHECKED	JEF	05/19/15	TITLE:
THIS DRAWING AND SPECIFICATION CONTAINS PROPRIETARY INFORMATION TO MAGTROL INC. ANY DISCLOSURE OR REPRODUCTION OF THIS DOCUMENT WITHOUT WRITTEN AUTHORIZATION FROM MAGTROL INC. IS EXPRESSLY PROHIBITED	UNLESS OTHERWISE SPECIFIED: DIMENSIONS ARE IN INCHES DIAMETERS CONCENTRIC: .003 TIR FACES PERPENDICULAR: .003 INTERPRETATION PER ASME Y14.5M-1994 REMOVE ALL BURRS AND BREAK SHARP EDGES .005/.010 X 45° INSIDE CORNERS TO BE R .02 MAX TOLERANCES: .XX ± .01 X/Y ± 1/64" .XXX ± .005 X° ± 1° SURFACE FINISH 125 RMS MAX			DYNAMOMETER - 3 M12 T-SLOTS
	USED ON: - SIMILAR TO: - DWG NO:			HD-810-0200
SIZE <b>B</b>		SCALE 1:10	SHEET #	