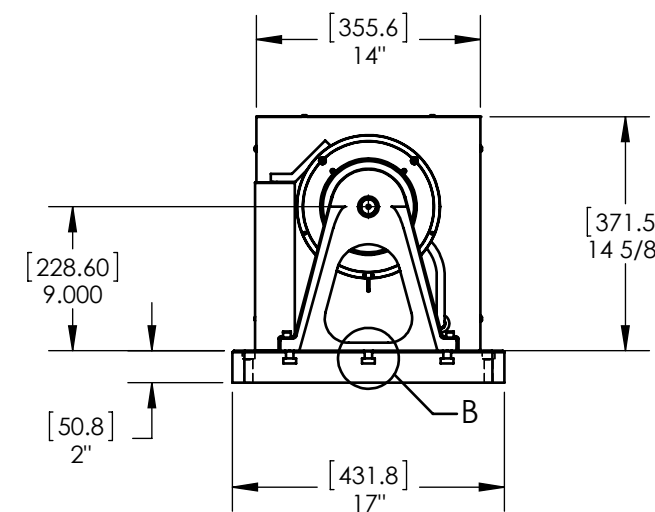
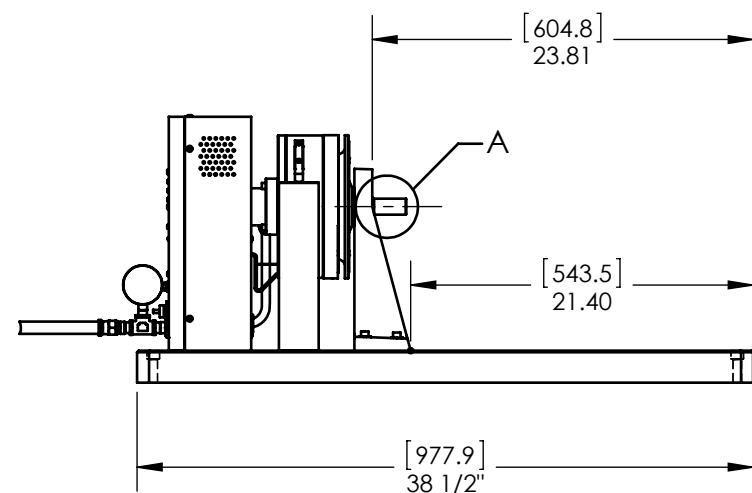
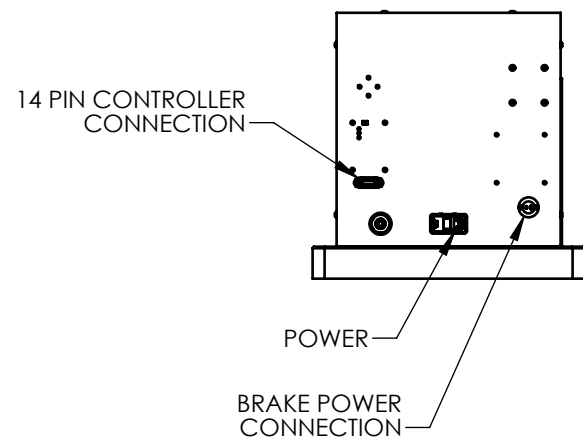
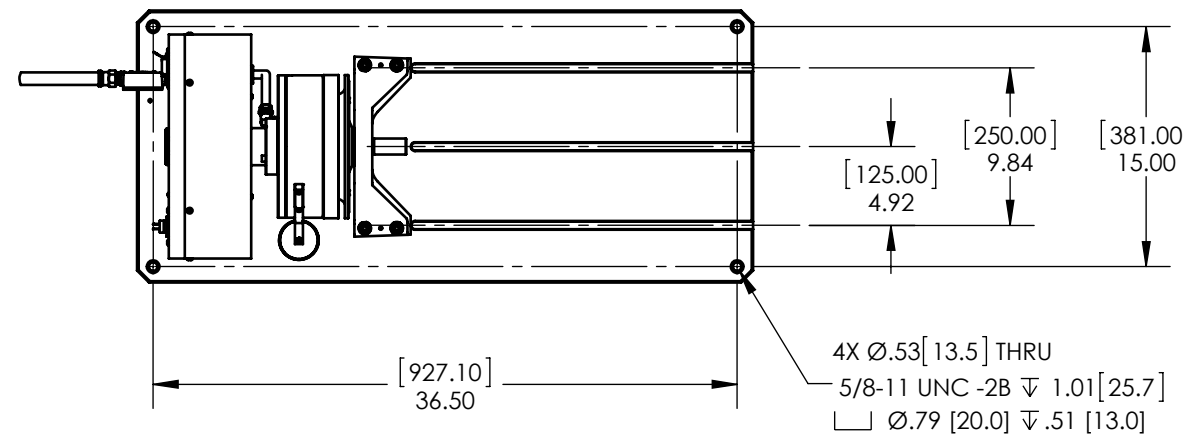
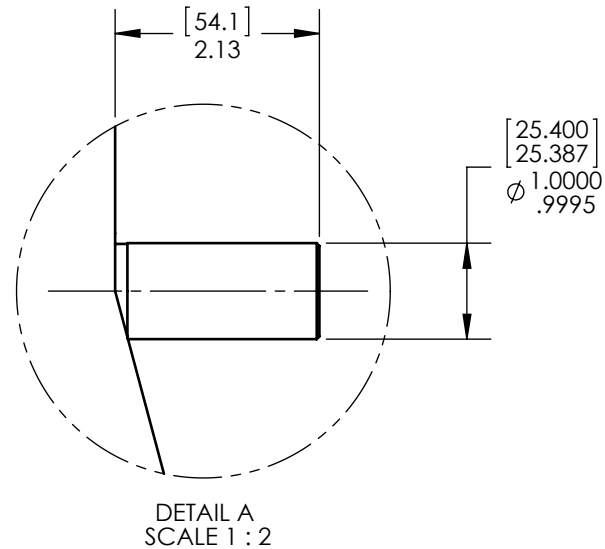
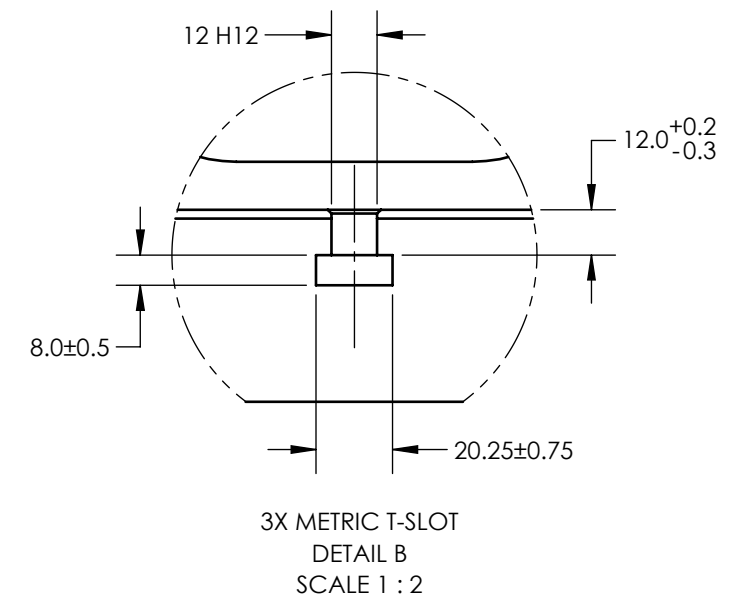


MODEL	TORQUE MEASURE UNIT CODE (-XXX)	STOCK CODE	MAXIMUM TORQUE RANGE	DRAG TORQUE DE-ENERGIZED AT 1000 RPM	NOMINAL INPUT INERTIA		MAXIMUM POWER		MAXIMUM SPEED (RPM)	COOLING
					(lb•ft•s ²)	(kg•m ²)	5-MINUTE (Watts)	CONTINUOUS (Watts)		
HD-800-XXX-0200	5N	007225	14.00 N m	0.10 N m	4.43 x 10 ⁻³	6.01 X 10 ⁻³	2,800	1,800	12,000	COMPRESSED AIR* (13 CFM @ 10 PSI)
	5NA	007226								
	6N	006022	125.0 lb in	0.8 lb in						
	6NA	006023								
	7N	006024	140.0 kg cm	1.0 kg cm						
	7NA	006025								
	8N	006026	14.00 N m	0.10 N m						
8NA	006027									


SOLID MODEL AVAILABLE

* REQUIRES AIR COOLING PROVIDED BY CUSTOMER. REGULATOR AND FILTER PACKAGE IS PROVIDED AS STANDARD EQUIPMENT



INSTALLATION DRAWING

NOTE: DIMENSIONS IN [] ARE mm.

MATERIAL:	DESIGN	-	-	 MAGTROL INC. 70 GARDENVILLE PKWY, W. BUFFALO, NEW YORK 14224-1322
FINISH:	DRAWN	AJC	05/18/15	
THIRD ANGLE PROJECTION	CHECKED	JEF	05/18/15	TITLE:
THIS DRAWING AND SPECIFICATION CONTAINS PROPRIETARY INFORMATION TO MAGTROL INC. ANY DISCLOSURE OR REPRODUCTION OF THIS DOCUMENT WITHOUT WRITTEN AUTHORIZATION FROM MAGTROL INC. IS EXPRESSLY PROHIBITED	UNLESS OTHERWISE SPECIFIED: DIMENSIONS ARE IN INCHES DIAMETERS CONCENTRIC: .003 TIR FACES PERPENDICULAR: .003 INTERPRETATION PER ASME Y14.5M-1994 REMOVE ALL BURRS AND BREAK SHARP EDGES .005/.010 X 45° INSIDE CORNERS TO BE R .02 MAX TOLERANCES: .XX ± .01 X/Y ± 1/64" .XXX ± .005 X° ± 1° SURFACE FINISH 125 RMS MAX			DYNAMOMETER - 3 M12 T-SLOTS
	DWG NO: HD-800-0200			REV: -
SIZE: B		SCALE: 1:12	SHEET #: 2 OF 2	