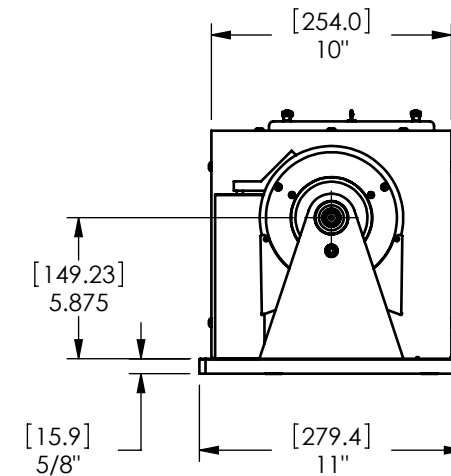
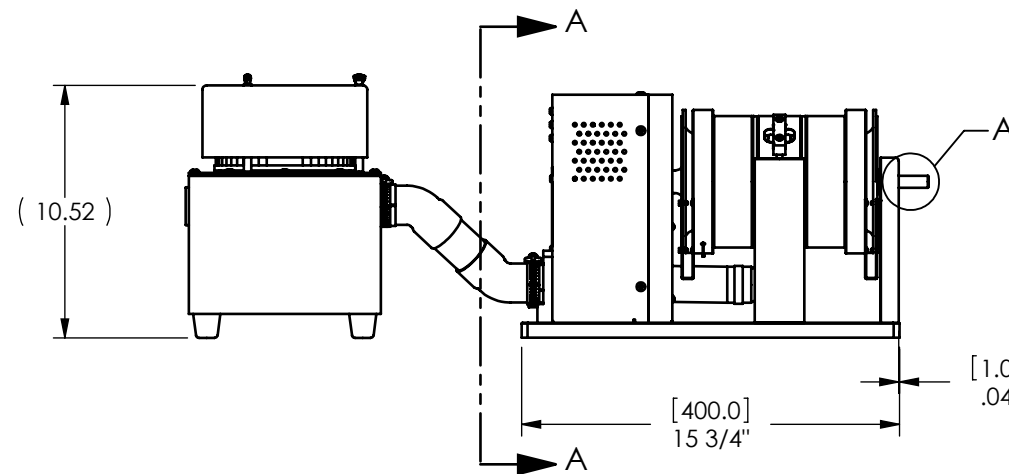
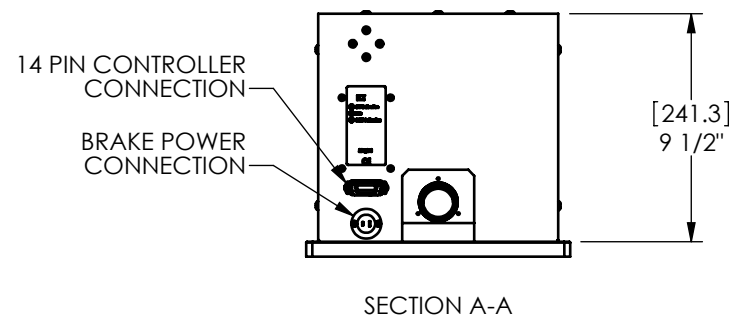
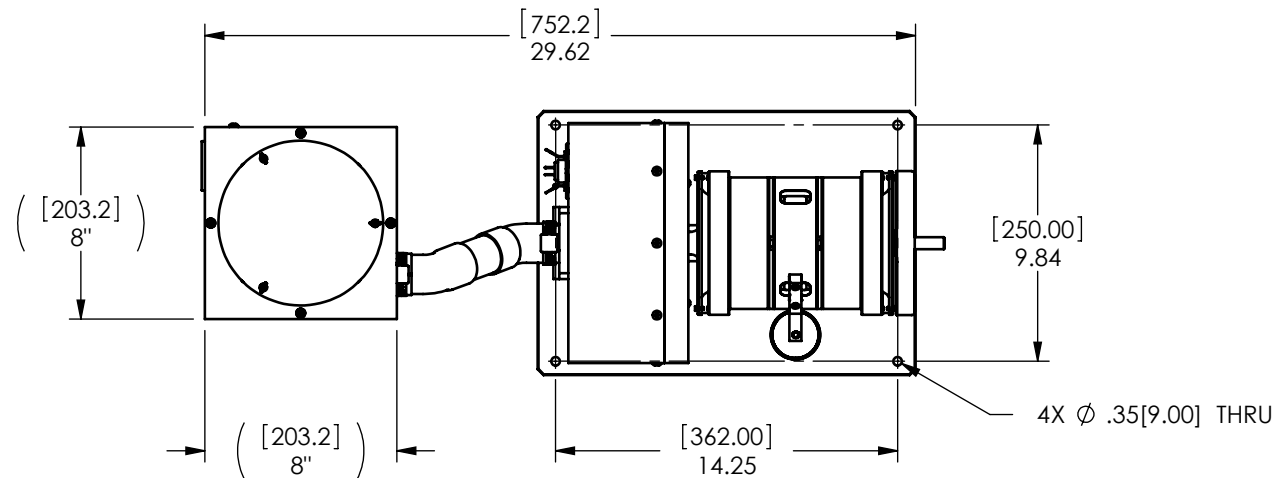
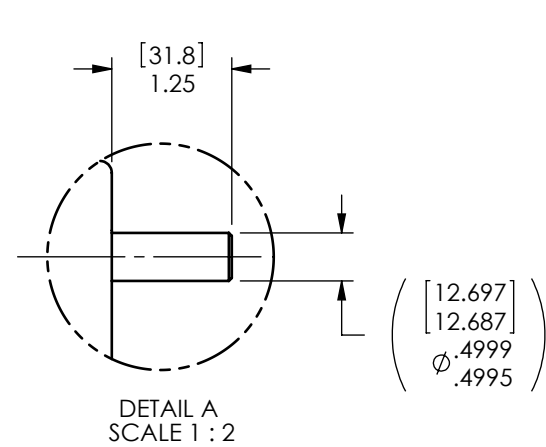
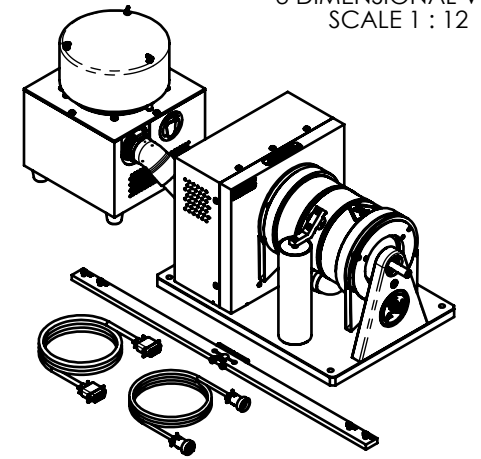



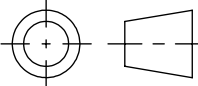
MODEL	TORQUE MEASURE UNIT CODE (-XXX)	STOCK CODE	MAXIMUM TORQUE RANGE	DRAG TORQUE DE-ENERGIZED AT 1000 RPM	NOMINAL INPUT INERTIA		MAXIMUM POWER		MAXIMUM SPEED (RPM)	COOLING METHOD	BLOWER MODEL
					(lb•ft•s ²)	(kg•m ²)	5-MINUTE (Watts)	CONTINUOUS (Watts)			
HD-715-XXX-0100	5N	006719	6.20 N m	0.023 N m	1.10 x 10 ⁻³	1.49 x 10 ⁻³	3,400	3,000	25,000	BLOWER	BL-001
	5NA	006720									BL-001-A
	6N	005913	55.0 lb in	0.2 lb in							BL-001
	6NA	005916									BL-001-A
	7N	005914	62.0 kg cm	0.24 kg cm							BL-001
	7NA	005917									BL-001-A
	8N	005915	6.20 N m	0.023 N m							BL-001
	8NA	005918									BL-001-A

SOLID MODEL AVAILABLE

3 DIMENSIONAL VIEW
SCALE 1 : 12



INSTALLATION DRAWING

MATERIAL:	DESIGN	DTW	09/29/03	 MAGTROL INC. 70 GARDENVILLE PKWY, W. BUFFALO, NEW YORK 14224-1322
FINISH:	DRAWN	DTW	10/02/03	
	CHECKED	AJC	10/03/03	
THIRD ANGLE PROJECTION				TITLE:
THIS DRAWING AND SPECIFICATION CONTAINS PROPRIETARY INFORMATION TO MAGTROL INC. ANY DISCLOSURE OR REPRODUCTION OF THIS DOCUMENT WITHOUT WRITTEN AUTHORIZATION FROM MAGTROL INC. IS EXPRESSLY PROHIBITED	UNLESS OTHERWISE SPECIFIED: DIMENSIONS ARE IN INCHES DIAMETERS CONCENTRIC: .003 TIR FACES PERPENDICULAR: .003 INTERPRETATION PER ASME Y14.5M-1994 REMOVE ALL BURRS AND BREAK SHARP EDGES .005/.010 X 45° INSIDE CORNERS TO BE R .02 MAX TOLERANCES: .XX ± .01 X/Y ± 1/64" .XXX ± .005 ANG ± 1° SURFACE FINISH 125 RMS MAX			HD-715-0100 SHORT BASE DYNAMOMETER
	USED ON: - SIMILAR TO: -			DWG NO:
				HD-715-0100
SIZE		SCALE		REV
B		1:8		B