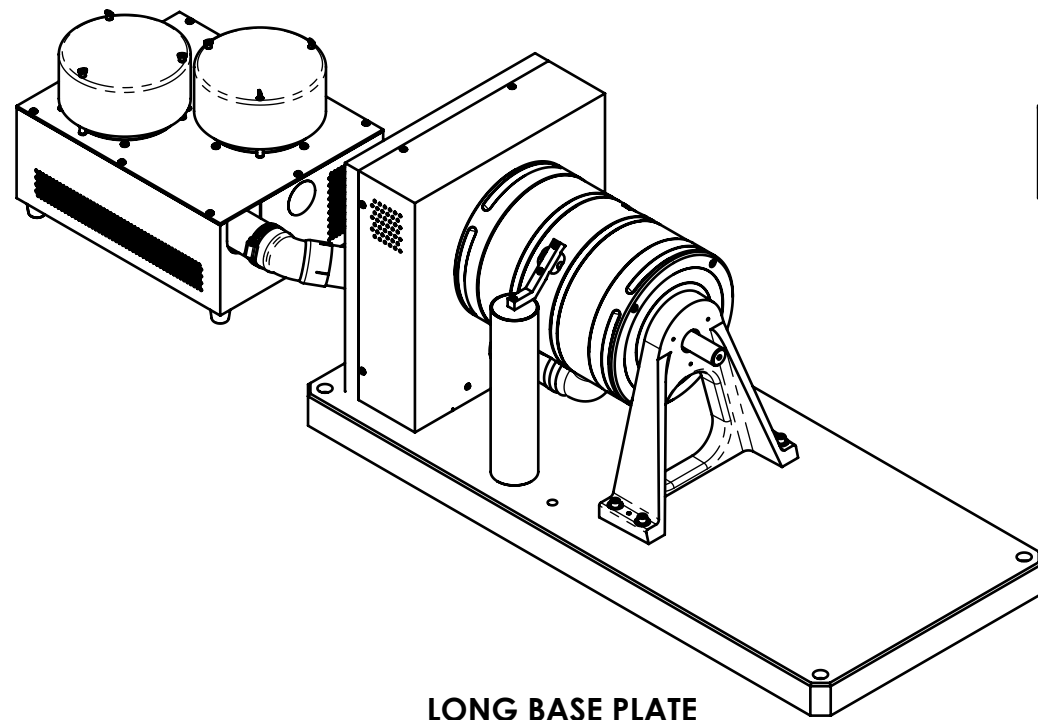
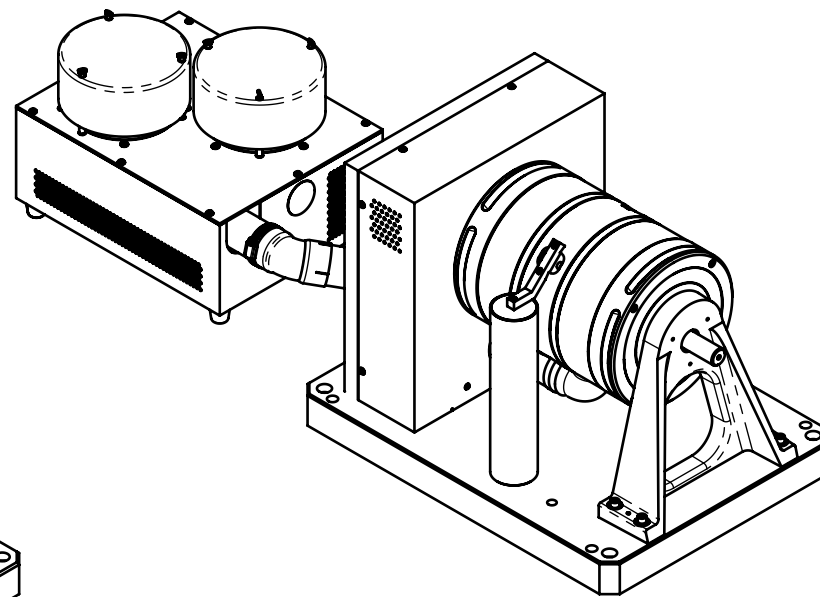


MODEL	MAXIMUM TORQUE RANGE	DRAG TORQUE DE-ENERGIZED AT 1000 RPM	NOMINAL INPUT INERTIA	MAXIMUM KINETIC POWER*		MAXIMUM SPEED	COOLING*
				5-MINUTE	CONTINUOUS		
HD-815-XCX-0XXX	28 N·m	0.14 N·m	$11.5 \times 10^{-3} \text{ kg} \cdot \text{m}^2$	7,000 W	6,000 W	12,000 rpm	BLOWER (INCLUDED)
	250 lb·in	1.2 lb·in	$8.49 \times 10^{-3} \text{ lb} \cdot \text{ft} \cdot \text{s}^2$	9.3 hp	8.0 hp		

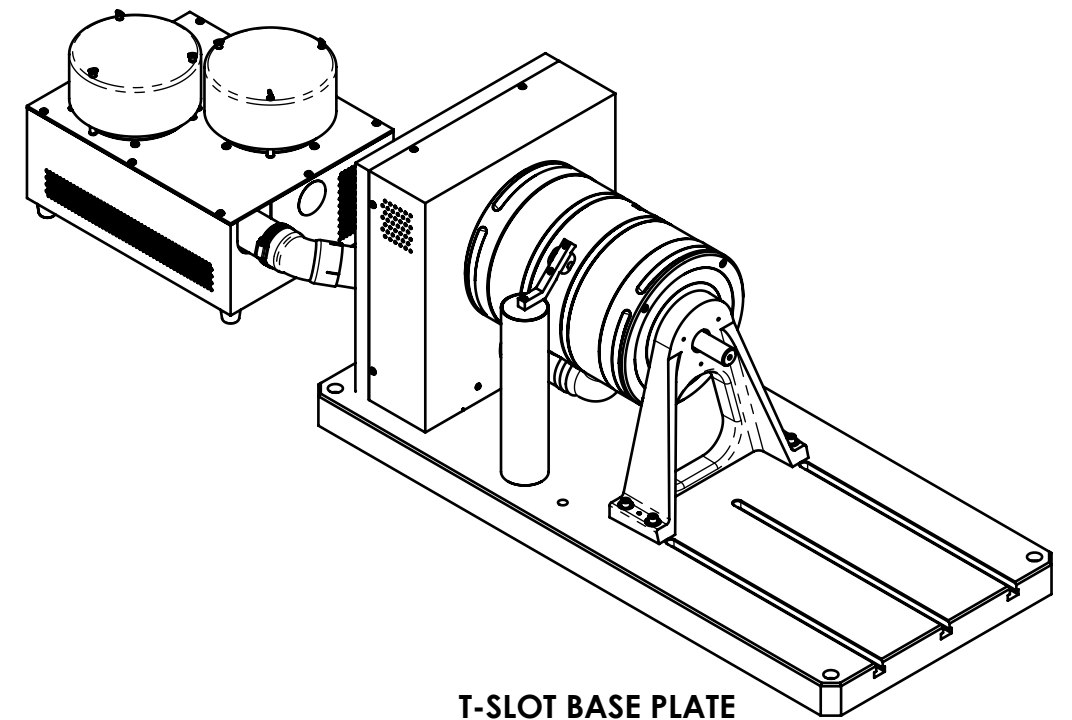
\* AIR COOLING IS REQUIRED TO ACHIEVE THE STATES KINETIC POWER RATINGS. A BLOWER ASSEMBLY IS PROVIDED AS STANDARD EQUIPMENT.




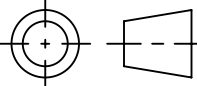
LONG BASE PLATE

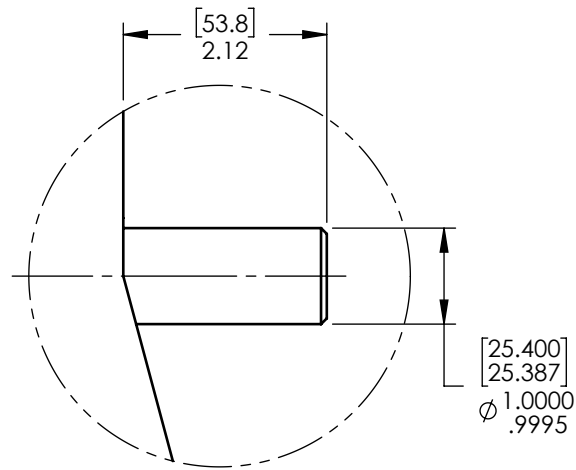


SHORT BASE PLATE

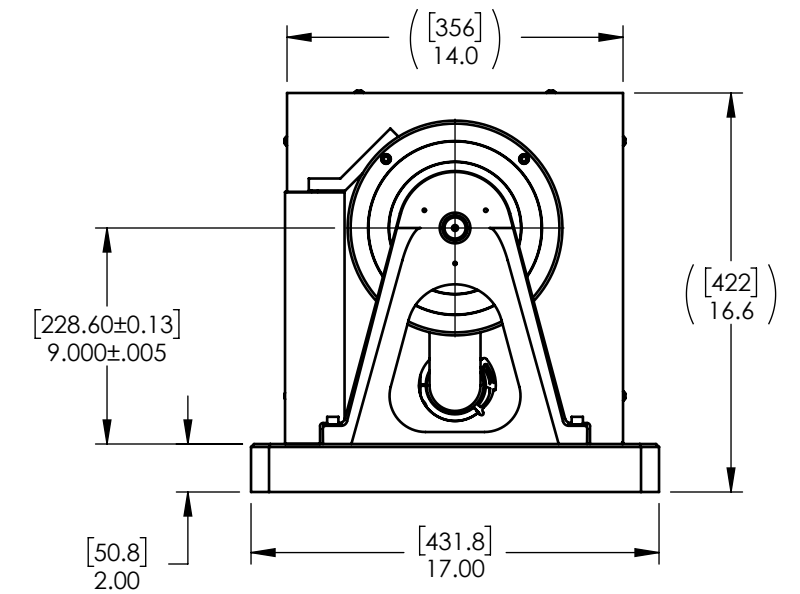
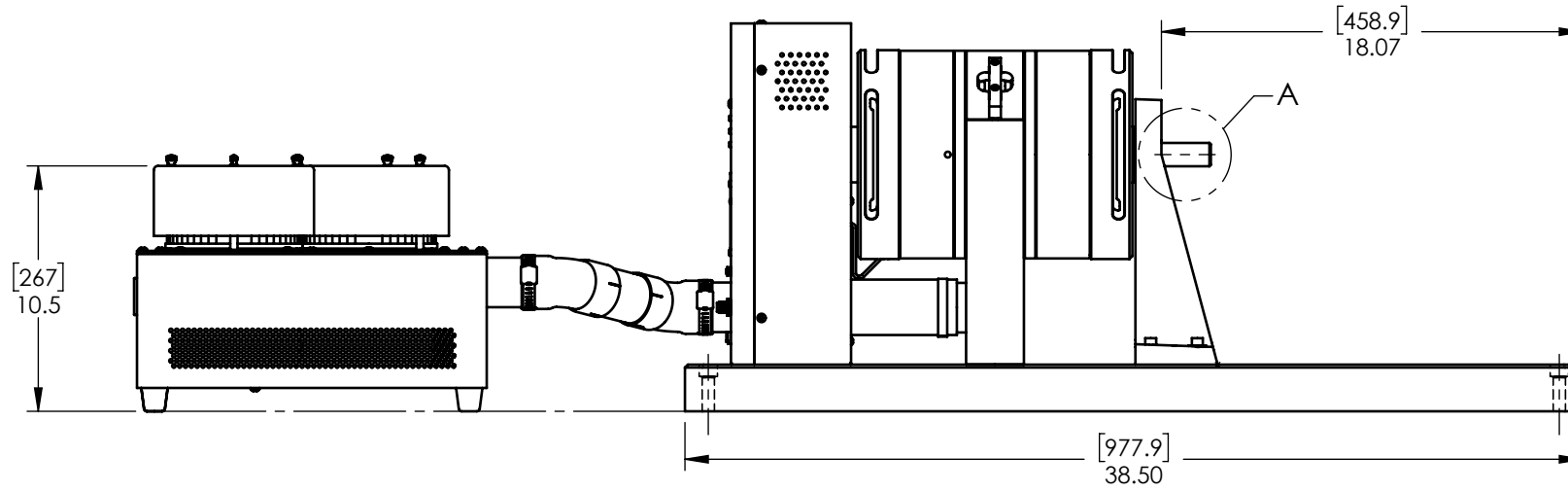
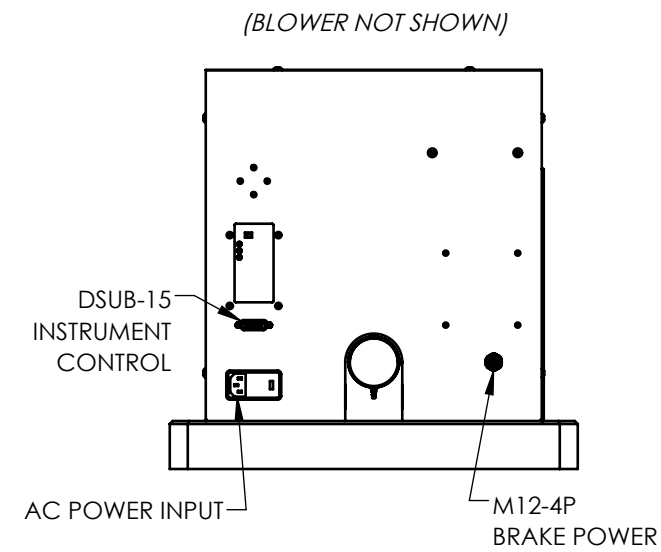
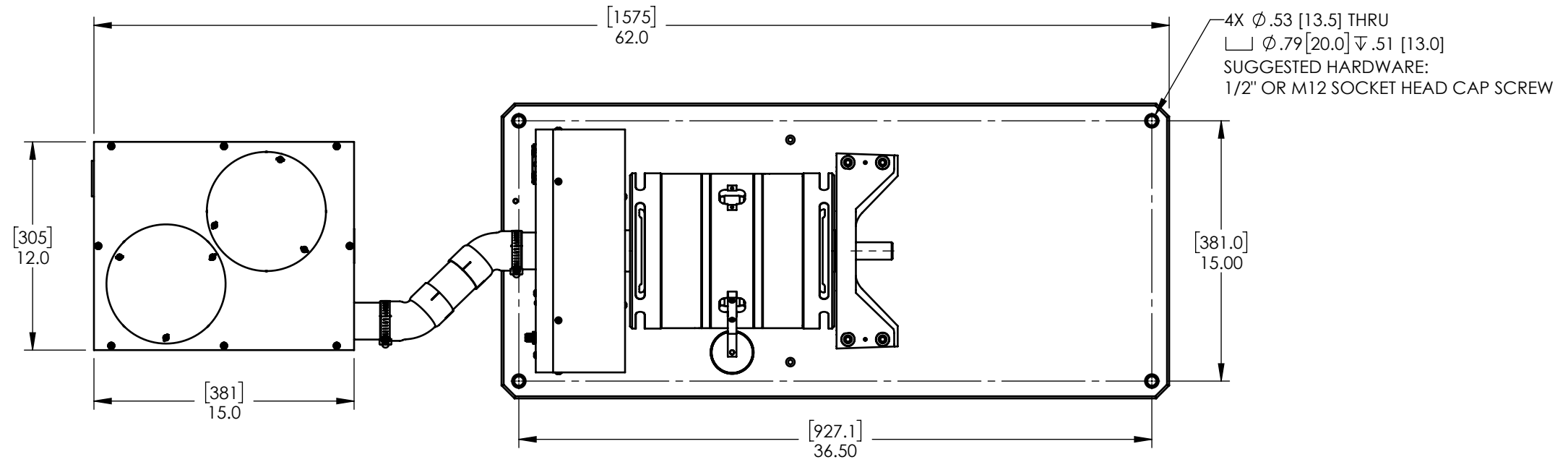


T-SLOT BASE PLATE


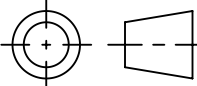
MATERIAL:	DESIGN	-	-	 <b>MAGTROL INC.</b> 70 GARDENVILLE PKWY, W. BUFFALO, NEW YORK 14224-1322
	DRAWN	AMH	01/06/2022	
FINISH:	CHECKED	JEF	01/13/2022	TITLE:
	THIRD ANGLE PROJECTION 			HD-815 DYNAMOMETER USED ON: - SIMILAR TO: -
THIS DRAWING AND SPECIFICATION CONTAINS PROPRIETARY INFORMATION TO MAGTROL INC. ANY DISCLOSURE OR REPRODUCTION OF THIS DOCUMENT WITHOUT WRITTEN AUTHORIZATION FROM MAGTROL INC. IS EXPRESSLY PROHIBITED				UNLESS OTHERWISE SPECIFIED: DIMENSIONS ARE IN INCHES DIAMETERS CONCENTRIC: .003 TIR FACES PERPENDICULAR: .003 INTERPRETATION PER ASME Y14.5M-1994 REMOVE ALL BURRS AND BREAK SHARP EDGES .005/.010 X 45° INSIDE CORNERS TO BE R .02 MAX TOLERANCES: .XX ± .01 X/Y ± 1/64" .XXX ± .005 X° ± 1° SURFACE FINISH 125 RMS MAX
DWG NO:			REV	
HD-815-XCX-0XXXi			-	
SIZE	SCALE	SHEET #		
B	1:10	1 OF 4		

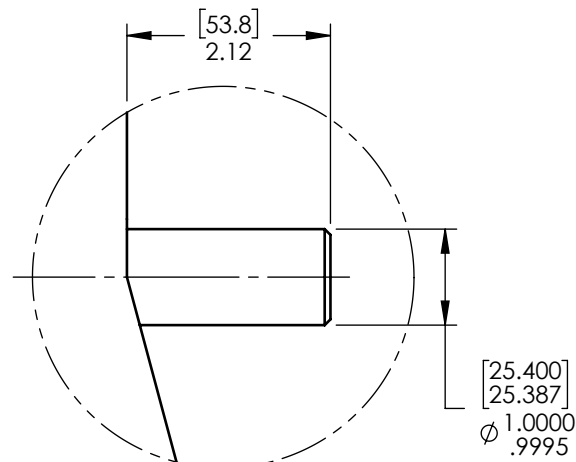


DETAIL A  
SCALE 1 : 2



NOTE: DIMENSIONS IN [ ] ARE mm.

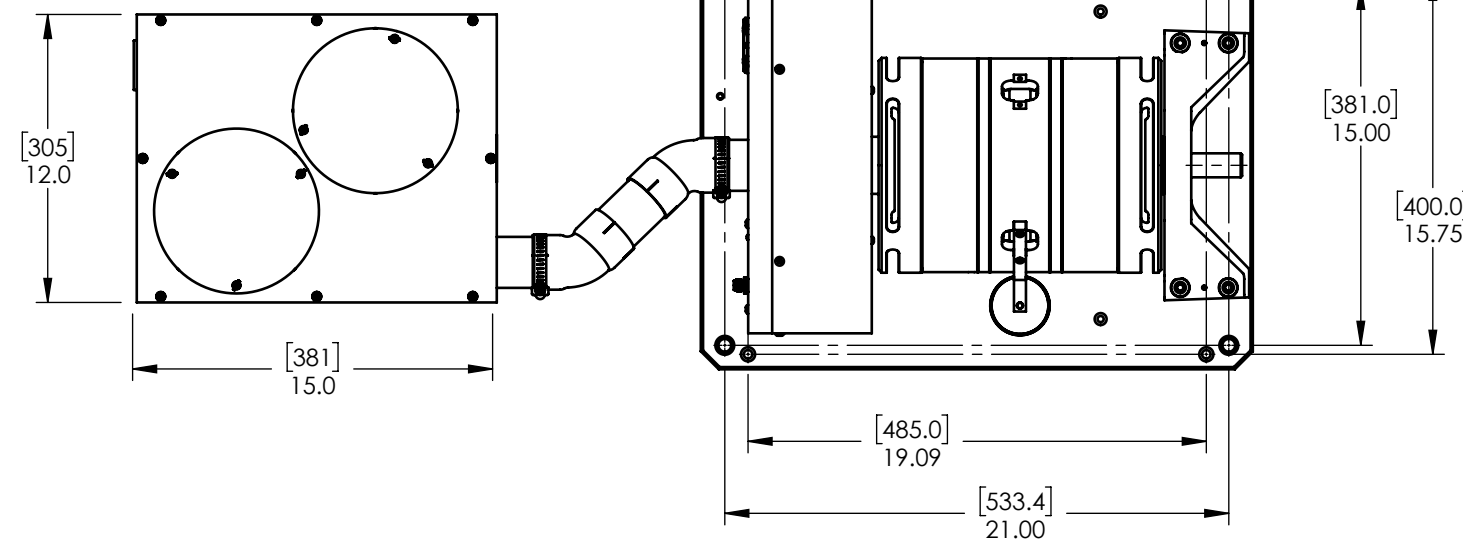
MATERIAL:	DESIGN	-	-	 <b>MAGTROL INC.</b> 70 GARDENVILLE PKWY, W. BUFFALO, NEW YORK 14224-1322
	DRAWN	AMH	01/06/2022	
FINISH:	CHECKED	JEF	01/13/2022	TITLE:
	THIRD ANGLE PROJECTION 			HD-815 DYNAMOMETER
UNLESS OTHERWISE SPECIFIED: DIMENSIONS ARE IN INCHES DIAMETERS CONCENTRIC: .003 TIR FACES PERPENDICULAR: .003 INTERPRETATION PER ASME Y14.5M-1994 REMOVE ALL BURRS AND BREAK SHARP EDGES .005/.010 X 45° INSIDE CORNERS TO BE R .02 MAX TOLERANCES: .XX ± .01 X/Y ± 1/64" .XXX ± .005 X° ± 1° SURFACE FINISH 125 RMS MAX				USED ON: - SIMILAR TO: - DWG NO: HD-815-XCX-0XXXi REV: -
THIS DRAWING AND SPECIFICATION CONTAINS PROPRIETARY INFORMATION TO MAGTROL INC. ANY DISCLOSURE OR REPRODUCTION OF THIS DOCUMENT WITHOUT WRITTEN AUTHORIZATION FROM MAGTROL INC. IS EXPRESSLY PROHIBITED				SIZE: B SCALE: 1:8 SHEET #: 2 OF 4



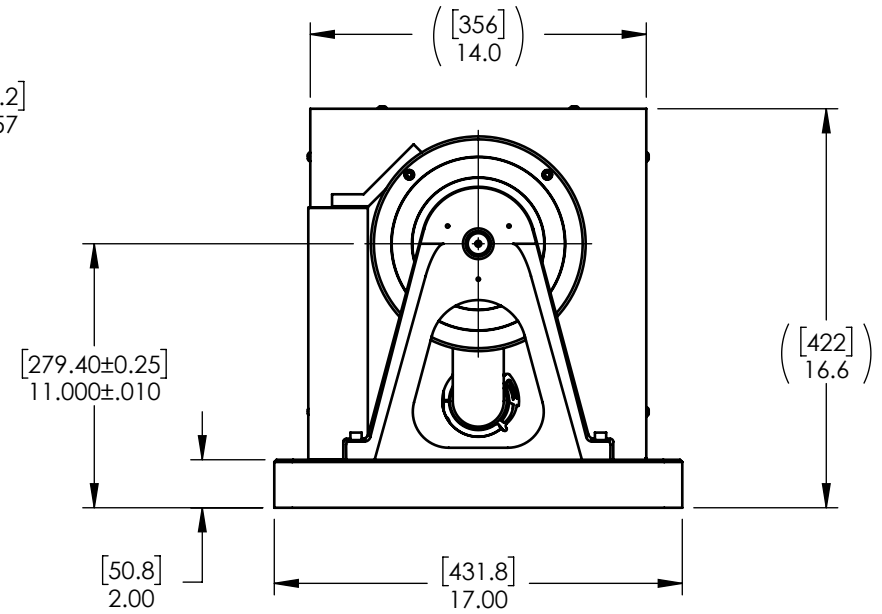
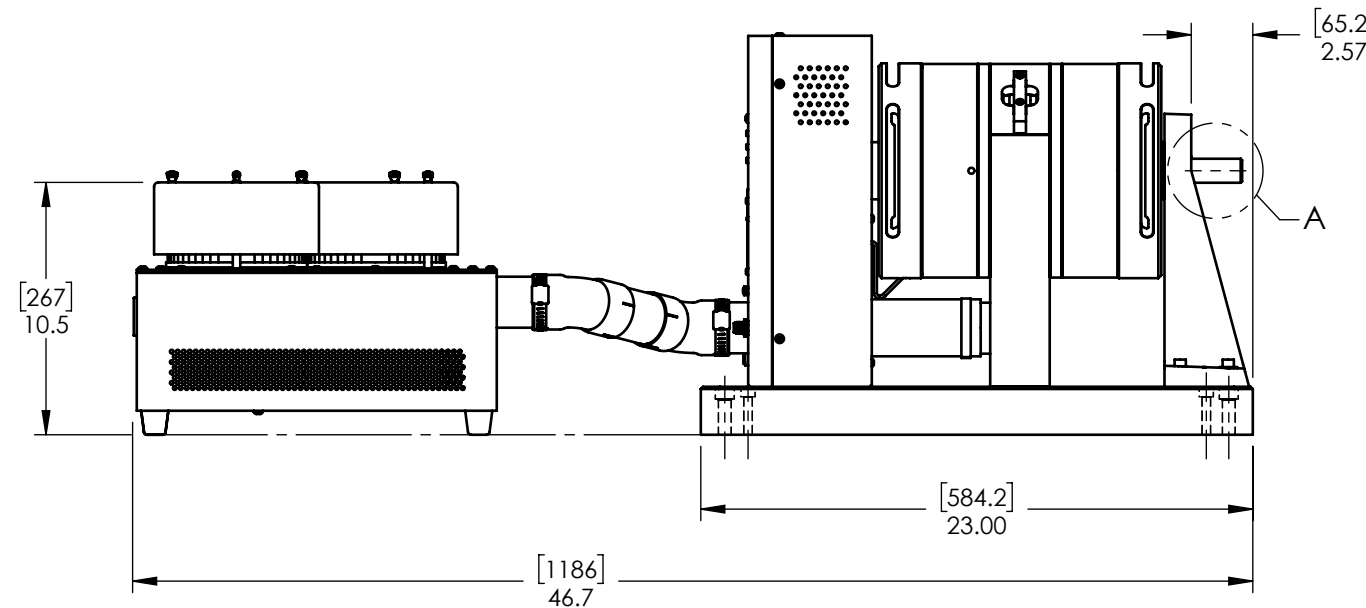
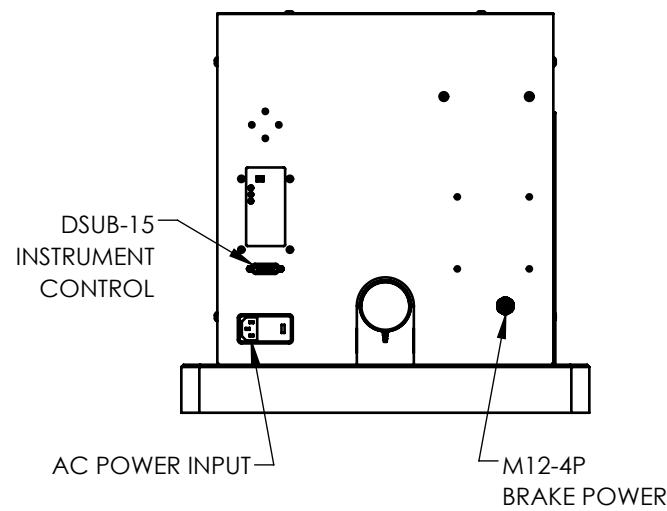
DETAIL A  
SCALE 1 : 2

4X  $\phi$  .35 [9.0] THRU  
 $\sqsupset$   $\phi$  .59 [15.0]  $\nabla$  .42 [10.7]  
 SUGGESTED HARDWARE:  
 M8 SOCKET HEAD CAP SCREW


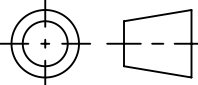
4X  $\phi$  .53 [13.5] THRU  
 $\sqsupset$   $\phi$  .79 [20.0]  $\nabla$  .51 [13.0]  
 SUGGESTED HARDWARE:  
 1/2" OR M12 SOCKET HEAD CAP SCREW

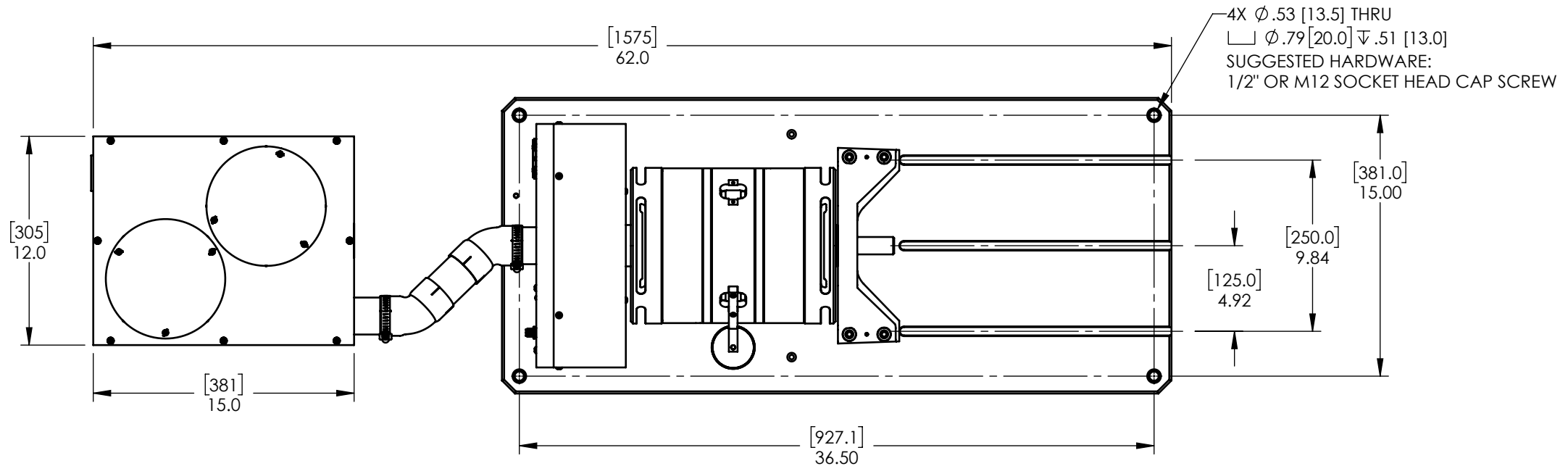
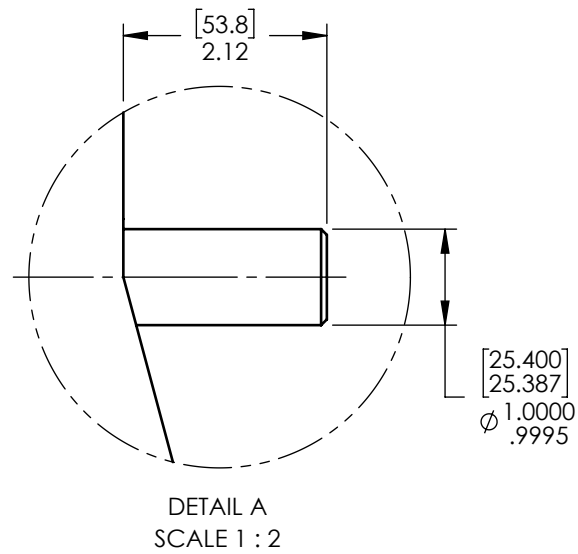


(BLOWER NOT SHOWN)

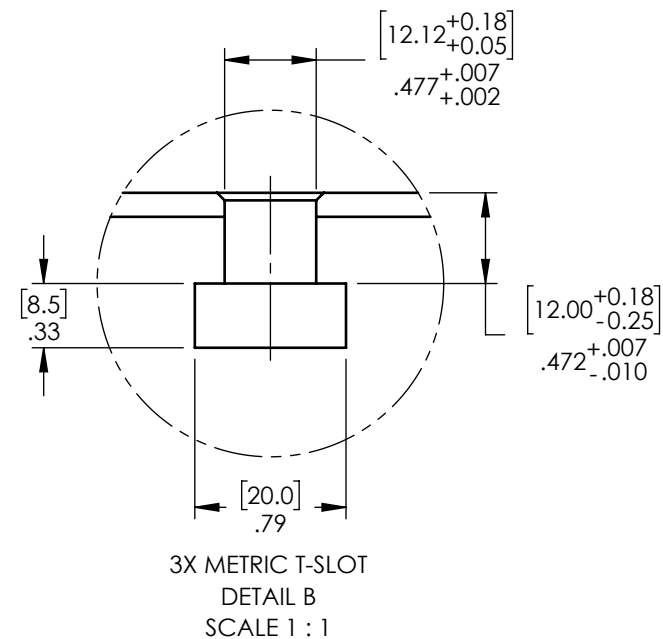
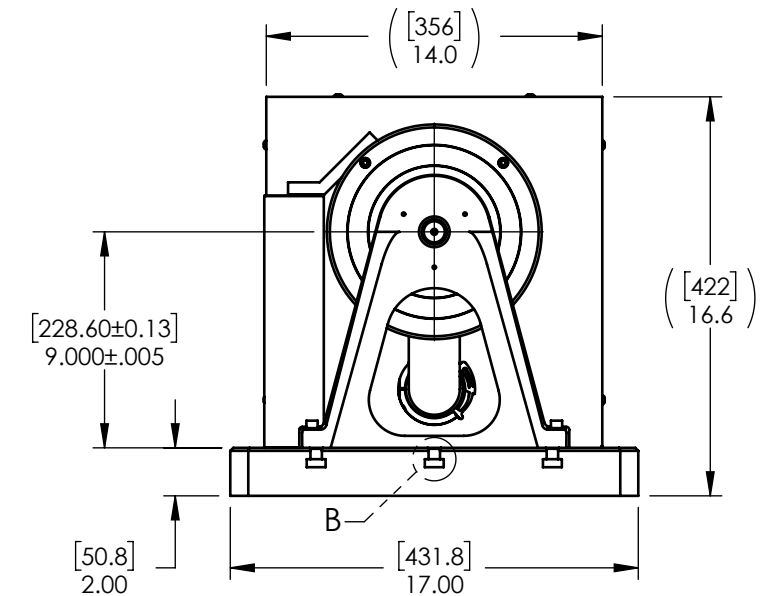
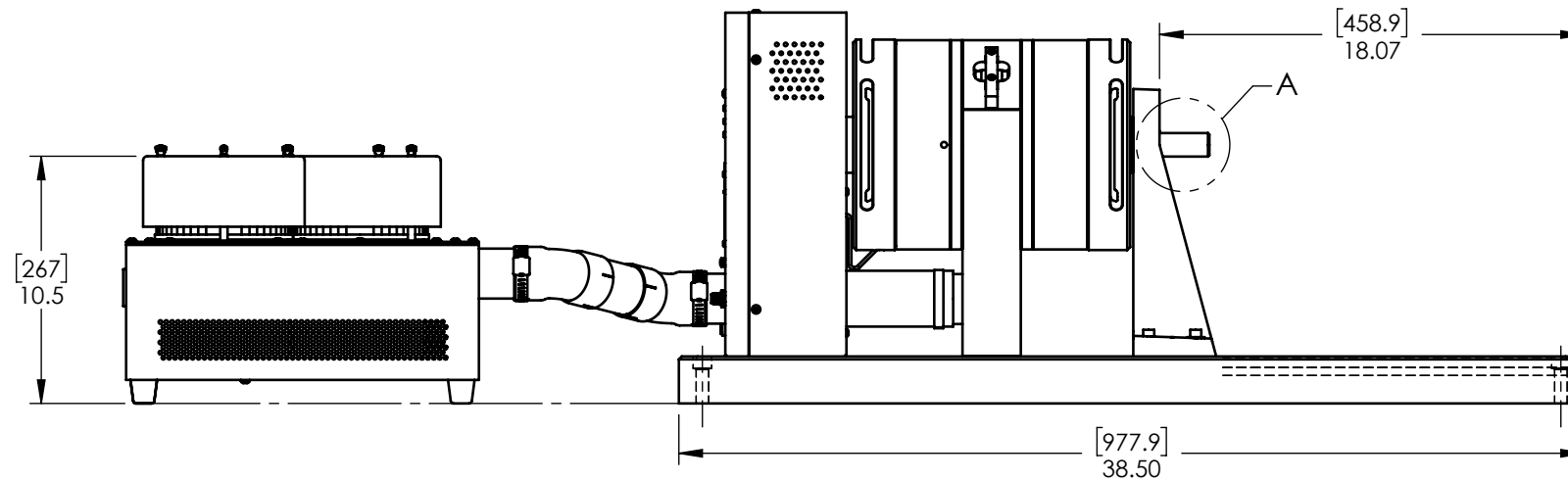
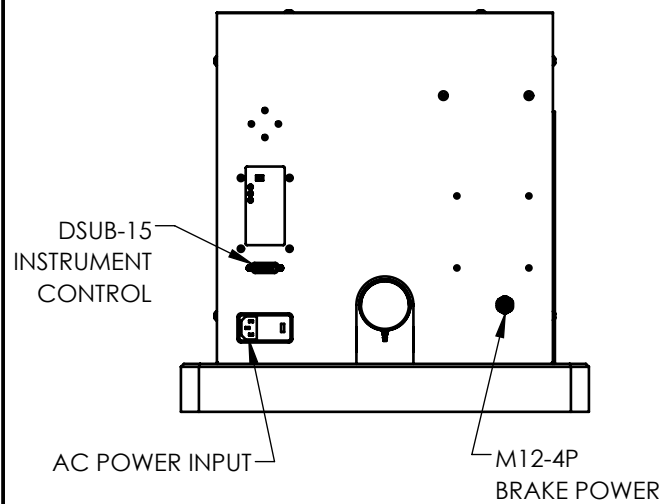


NOTE: DIMENSIONS IN [ ] ARE mm.


MATERIAL:	DESIGN	-	-	 <b>MAGTROL INC.</b> 70 GARDENVILLE PKWY, W. BUFFALO, NEW YORK 14224-1322	TITLE: <b>HD-815 DYNAMOMETER</b>
	DRAWN	AMH	01/06/2022		
FINISH:	CHECKED	JEF	01/13/2022	USED ON: -	REV -
	THIRD ANGLE PROJECTION 			SIMILAR TO: -	
THIS DRAWING AND SPECIFICATION CONTAINS PROPRIETARY INFORMATION TO MAGTROL INC. ANY DISCLOSURE OR REPRODUCTION OF THIS DOCUMENT WITHOUT WRITTEN AUTHORIZATION FROM MAGTROL INC. IS EXPRESSLY PROHIBITED				UNLESS OTHERWISE SPECIFIED: DIMENSIONS ARE IN INCHES DIAMETERS CONCENTRIC: .003 TIR FACES PERPENDICULAR: .003 INTERPRETATION PER ASME Y14.5M-1994 REMOVE ALL BURRS AND BREAK SHARP EDGES .005/.010 X 45° INSIDE CORNERS TO BE R .02 MAX TOLERANCES: .XX ± .01 X/Y ± 1/64" .XXX ± .005 X° ± 1° SURFACE FINISH 125 RMS MAX	
				DWG NO: <b>HD-815-XCX-0XXXi</b>	SIZE <b>B</b>
				SCALE <b>1:8</b>	SHEET # <b>3 OF 4</b>



(BLOWER NOT SHOWN)



NOTE: DIMENSIONS IN [ ] ARE mm.

MATERIAL:	DESIGN	-	-	 <b>MAGTROL INC.</b> 70 GARDENVILLE PKWY, W. BUFFALO, NEW YORK 14224-1322
FINISH:	DRAWN	AMH	01/06/2022	
THIRD ANGLE PROJECTION	CHECKED	JEF	01/13/2022	TITLE: HD-815 DYNAMOMETER
THIS DRAWING AND SPECIFICATION CONTAINS PROPRIETARY INFORMATION TO MAGTROL INC. ANY DISCLOSURE OR REPRODUCTION OF THIS DOCUMENT WITHOUT WRITTEN AUTHORIZATION FROM MAGTROL INC. IS EXPRESSLY PROHIBITED	UNLESS OTHERWISE SPECIFIED: DIMENSIONS ARE IN INCHES DIAMETERS CONCENTRIC: .003 TIR FACES PERPENDICULAR: .003 INTERPRETATION PER ASME Y14.5M-1994 REMOVE ALL BURRS AND BREAK SHARP EDGES .005/.010 X 45° INSIDE CORNERS TO BE R .02 MAX TOLERANCES: .XX ± .01 X/Y ± 1/64" .XXX ± .005 X° ± 1° SURFACE FINISH 125 RMS MAX			USED ON: - SIMILAR TO: - DWG NO: HD-815-XCX-0XXXi REV -
	SIZE	SCALE	SHEET #	4 OF 4