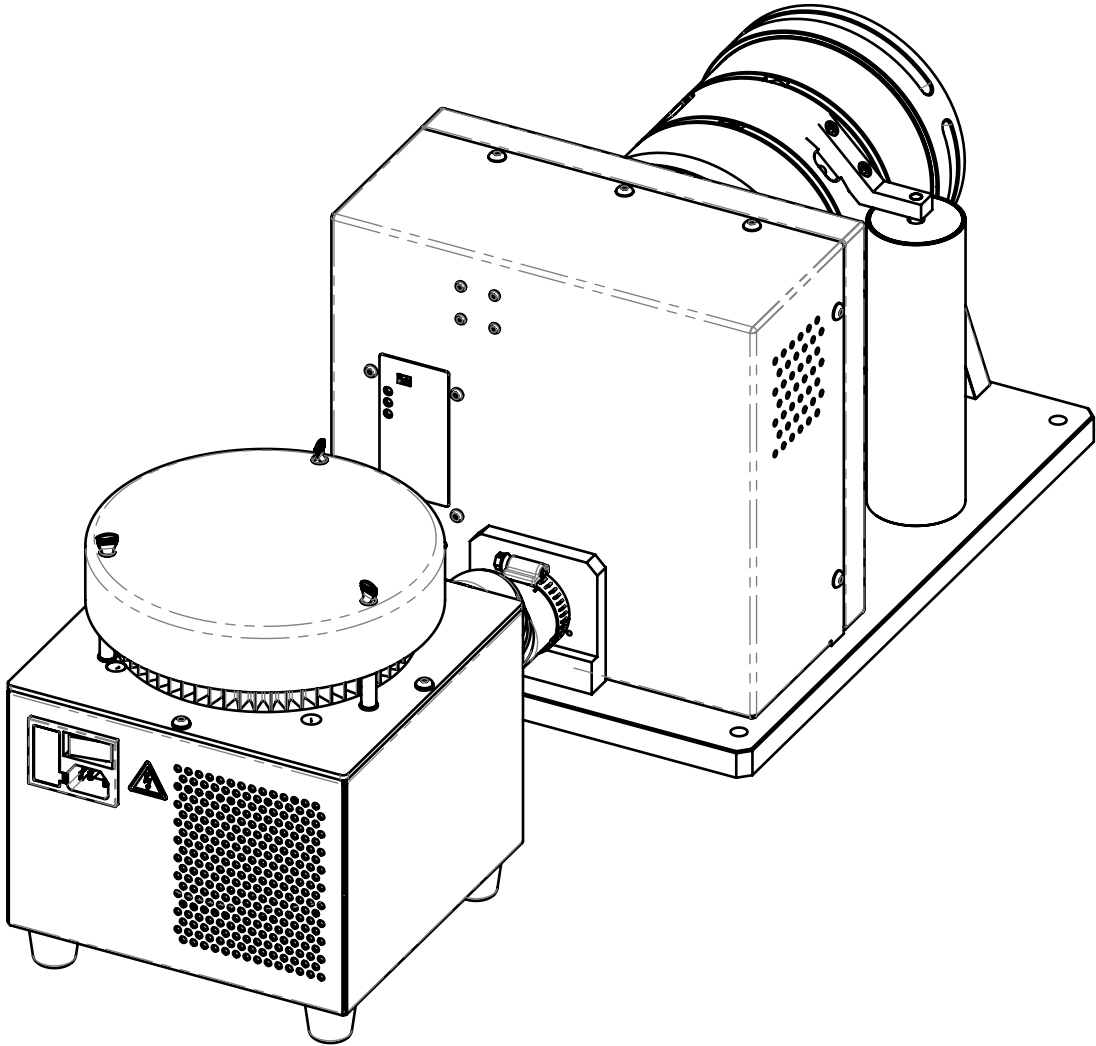
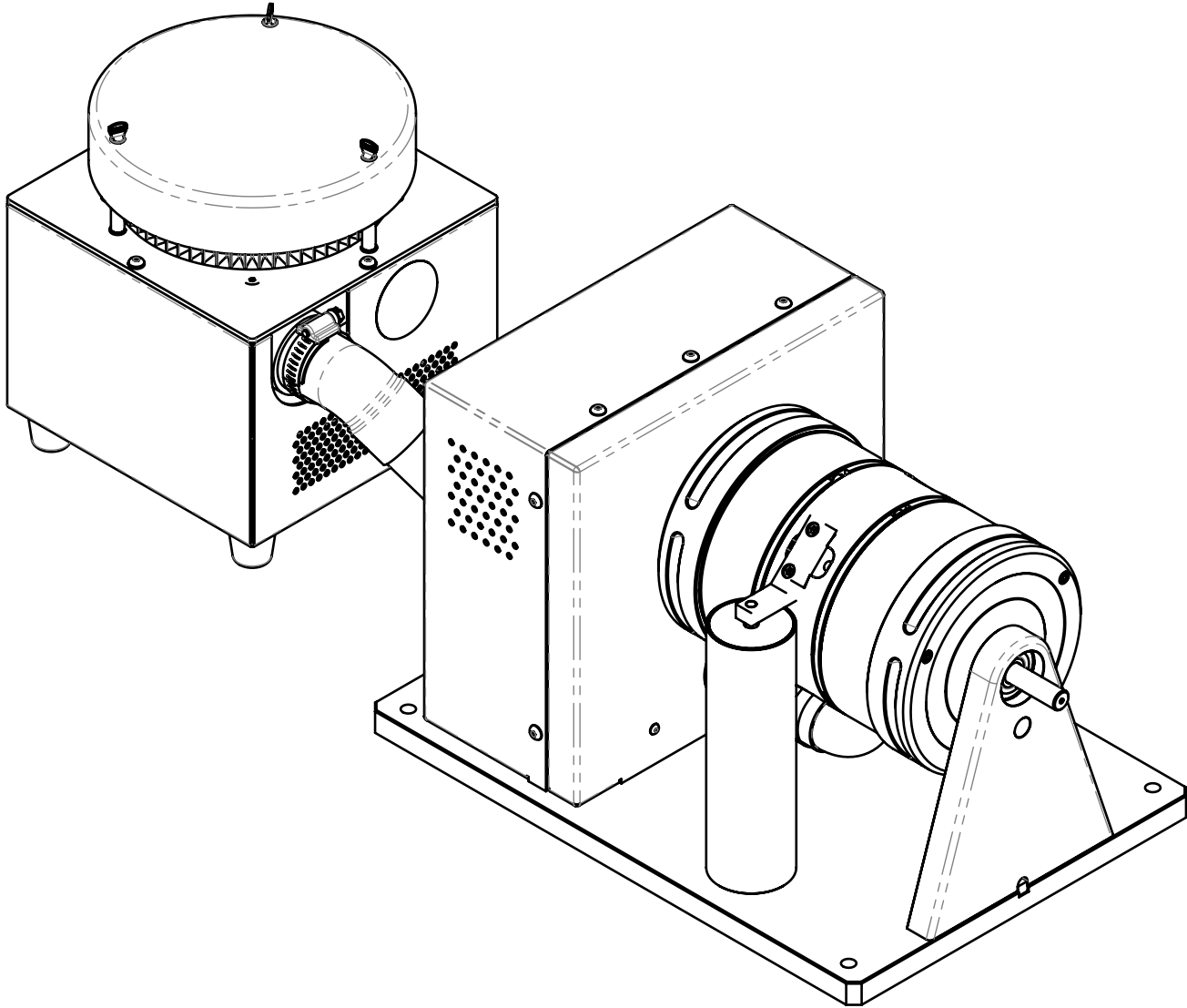

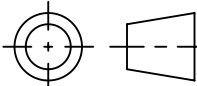
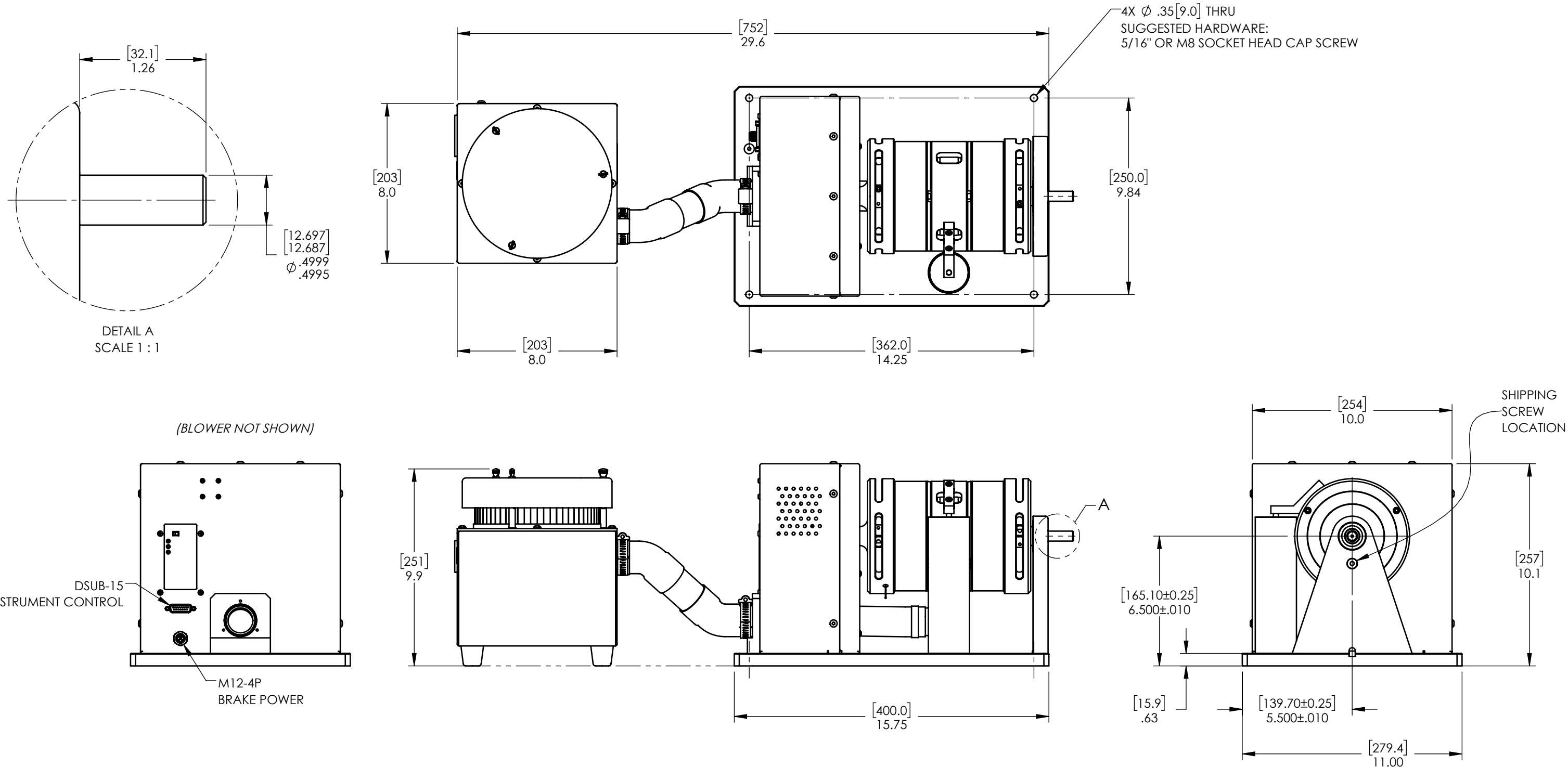



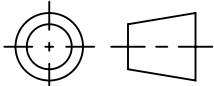
MODEL	MAXIMUM TORQUE RANGE	DRAG TORQUE DE-ENERGIZED AT 1000 RPM	NOMINAL INPUT INERTIA	MAXIMUM POWER		MAXIMUM SPEED	COOLING	
				5-MINUTE	CONTINUOUS			
HD-715-XCX-0XXX	6.2 N · m	23 mN · m	$1.38 \times 10^{-3} \text{ kg} \cdot \text{m}^2$	3,400 W	3,000 W	25,000 rpm	BLOWER (INCLUDED)	
	55 lb · in	.20 lb · in	$1.02 \times 10^{-3} \text{ lb} \cdot \text{ft} \cdot \text{s}^2$	4.5 hp	4.0 hp			

* AIR COOLING IS REQUIRED TO ACHIEVE THE STATED KINETIC POWER RATINGS. BLOWER ASSEMBLY IS PROVIDED AS STANDARD EQUIPMENT.



MATERIAL: -	DESIGN	-	-	 MAGTROL INC. 70 GARDENVILLE PKWY, W. BUFFALO, NEW YORK 14224-1322	TITLE: HD-715 DYNAMOMETER		
	DRAWN	AMH	1/17/2022				
FINISH: -	CHECKED	JEF	1/24/2022	UNLESS OTHERWISE SPECIFIED: DIMENSIONS ARE: INCHES [mm] INTERPRETATION PER ASME Y14.5M-1994 DIMENSIONS WITHOUT TOLERANCE ARE REFERENCE			
	THIRD ANGLE PROJECTION 						
THIS DRAWING AND SPECIFICATION CONTAINS PROPRIETARY INFORMATION TO MAGTROL INC. ANY DISCLOSURE OR REPRODUCTION OF THIS DOCUMENT WITHOUT WRITTEN AUTHORIZATION FROM MAGTROL INC. IS EXPRESSLY PROHIBITED				DWG NO: HD-715-XCX-0XXXi		REV C	
				SIZE B	SCALE 1:4	SHEET # 1 OF 2	ISSUE 2



MATERIAL: -	DESIGN	-	-	 MAGTROL INC. 70 GARDENVILLE PKWY, W. BUFFALO, NEW YORK 14224-1322
	DRAWN	AMH	1/17/2022	
FINISH: -	CHECKED	JEF	1/24/2022	TITLE: HD-715 DYNAMOMETER
	UNLESS OTHERWISE SPECIFIED: DIMENSIONS ARE: INCHES [mm]			
THIRD ANGLE PROJECTION				USED ON: - SIMILAR TO: -
THIS DRAWING AND SPECIFICATION CONTAINS PROPRIETARY INFORMATION TO MAGTROL INC. ANY DISCLOSURE OR REPRODUCTION OF THIS DOCUMENT WITHOUT WRITTEN AUTHORIZATION FROM MAGTROL INC. IS EXPRESSLY PROHIBITED	INTERPRETATION PER ASME Y14.5M-1994			
	DIMENSIONS WITHOUT TOLERANCE ARE REFERENCE			
	DWG NO: HD-715-XCX-0XXXi			REV C
SIZE B		SCALE 1:5	SHEET # 2 OF 2	ISSUE 2