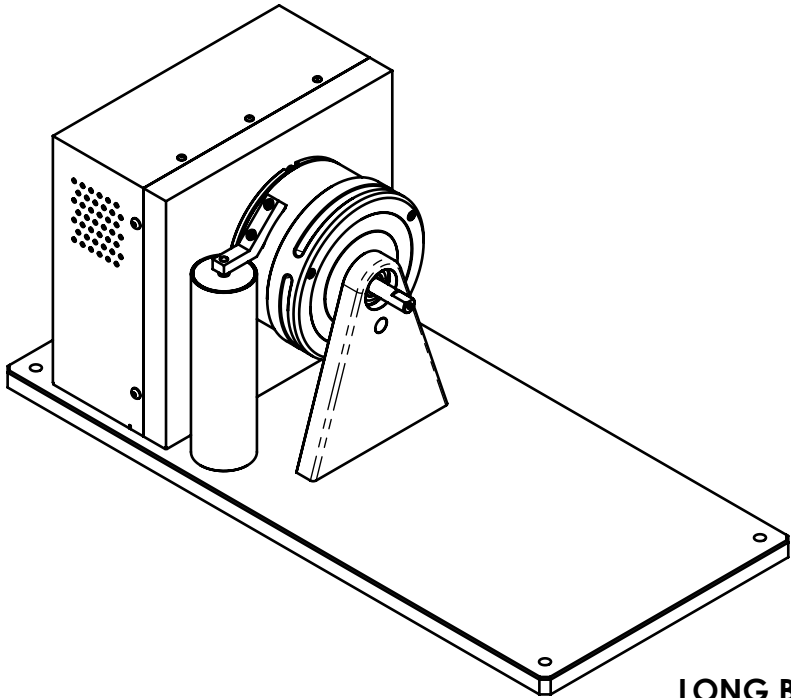
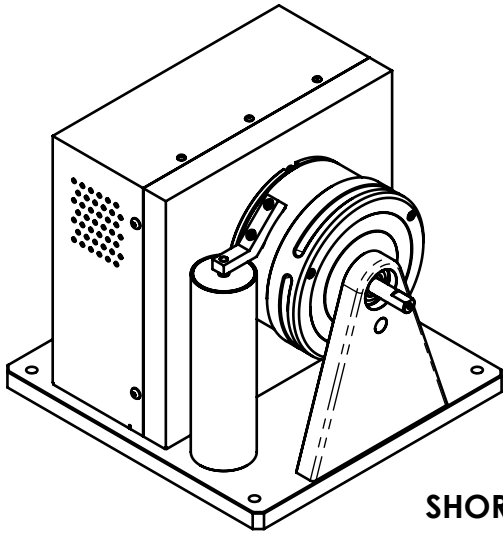



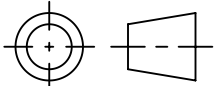
MODEL	MAXIMUM TORQUE RANGE	DRAG TORQUE DE-ENERGIZED AT 1000 RPM	NOMINAL INPUT INERTIA	MAXIMUM POWER		MAXIMUM SPEED	COOLING
				5-MINUTE	CONTINUOUS		
HD-700-XC0-0XXX	3.1 N·m	13 mN·m	$691 \times 10^{-6} \text{ kg} \cdot \text{m}^2$	700 W	150 W	25,000 rpm	CONVECTION
	440 oz·in	1.8 oz·in	$510 \times 10^{-6} \text{ lb} \cdot \text{ft} \cdot \text{s}^2$.93 hp	.20 hp		

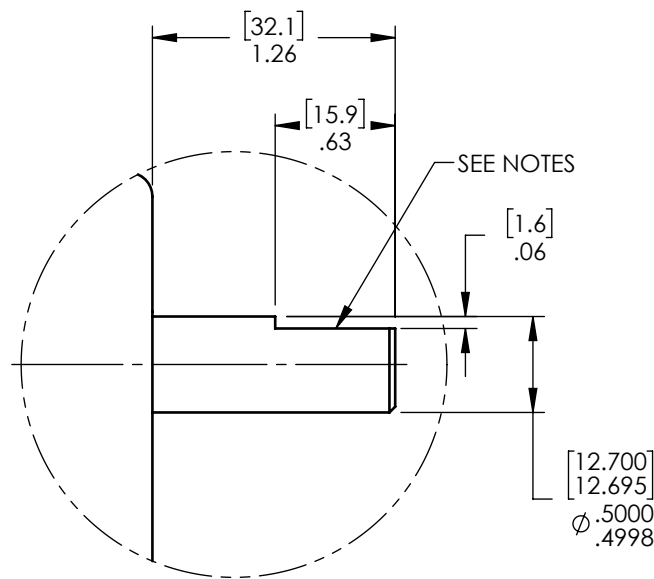


LONG BASE PLATE



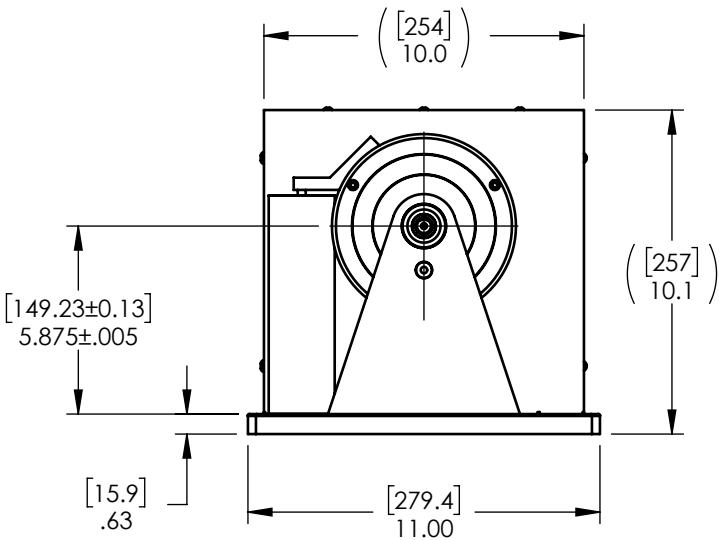
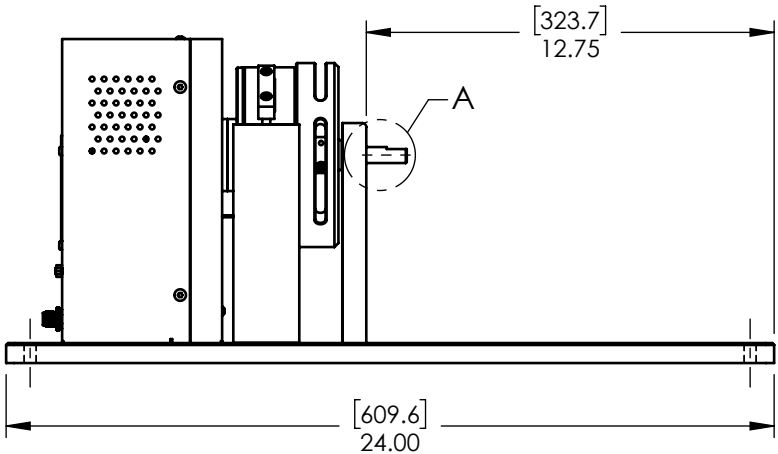
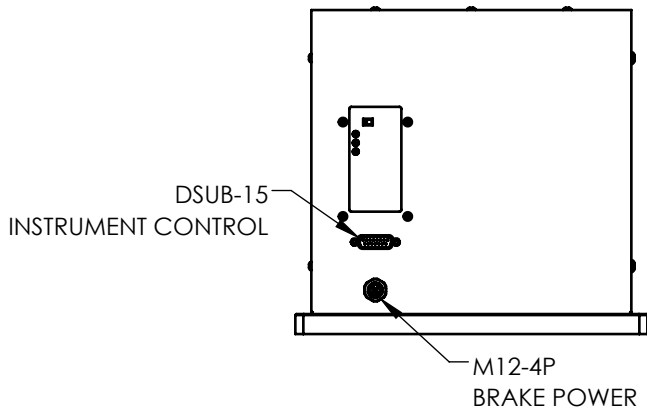
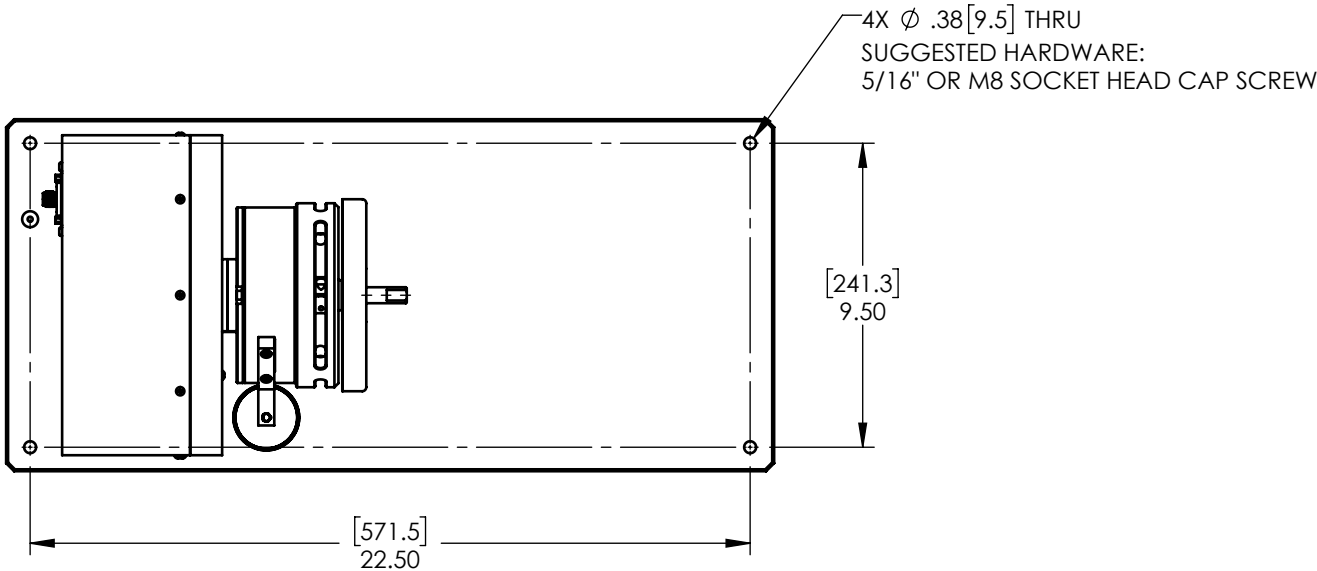
SHORT BASE PLATE

MATERIAL: -	DESIGN	-	-	 MAGTROL INC. 70 GARDENVILLE PKWY, W. BUFFALO, NEW YORK 14224-1322	TITLE: HD-700 DYNAMOMETER	
	DRAWN	AMH	10/04/2021			
FINISH: -	CHECKED	JEF	10/08/2021	UNLESS OTHERWISE SPECIFIED: DIMENSIONS ARE IN INCHES DIAMETERS CONCENTRIC: .003 TIR FACES PERPENDICULAR: .003 INTERPRETATION PER ASME Y14.5M-1994 REMOVE ALL BURRS AND BREAK SHARP EDGES .005/.010 X 45° INSIDE CORNERS TO BE R .02 MAX TOLERANCES: .XX ± .01 X/Y ± 1/64" .XXX ± .005 X° ± 1° SURFACE FINISH 125 RMS MAX		
THIRD ANGLE PROJECTION 	THIS DRAWING AND SPECIFICATION CONTAINS PROPRIETARY INFORMATION TO MAGTROL INC. ANY DISCLOSURE OR REPRODUCTION OF THIS DOCUMENT WITHOUT WRITTEN AUTHORIZATION FROM MAGTROL INC. IS EXPRESSLY PROHIBITED			USED ON: - SIMILAR TO: -	DWG NO: HD-700-XC0-0XXXi	REV A
				SIZE B	SCALE 1:6	SHEET # 1 OF 3


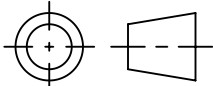


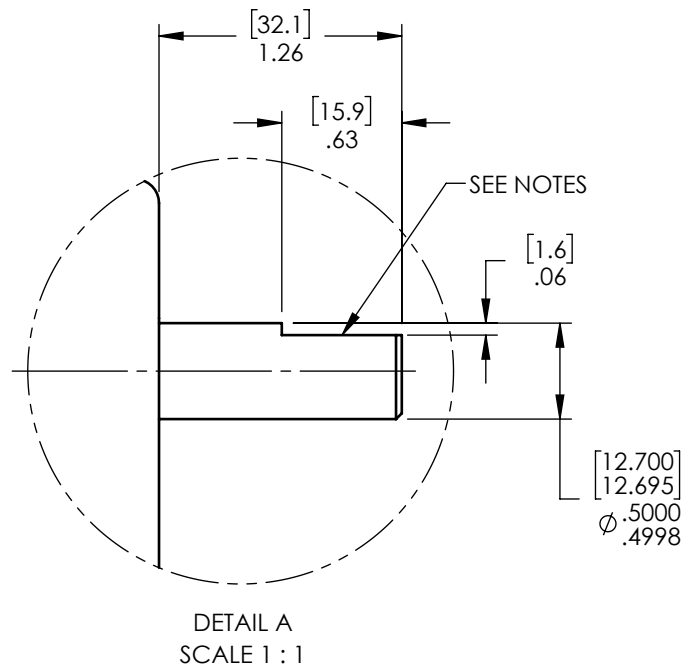
DETAIL A
SCALE 1 : 1

- NOTES:
- ENCLOSURE HIDDEN FOR CLARITY.
 - SHAFT FLAT IS PRESENT ON STANDARD SPEED DYNAMOMETER ONLY; HIGH SPEED VERSION IS A SMOOTH ROUND SHAFT.

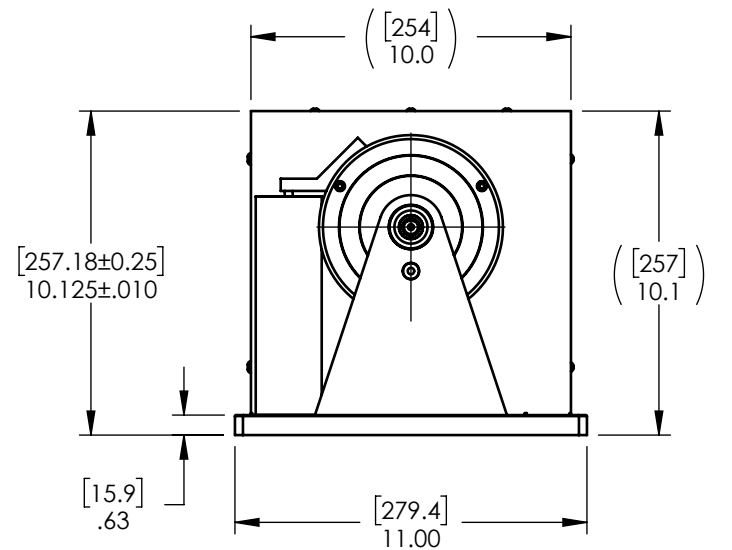
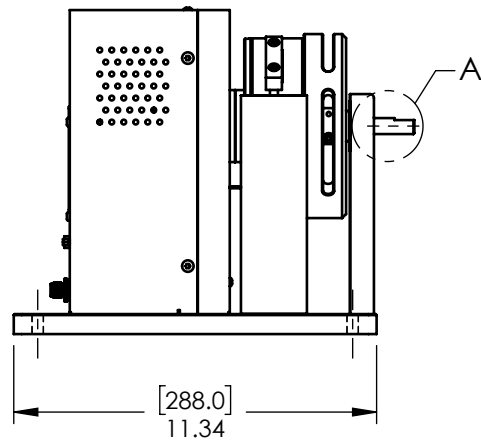
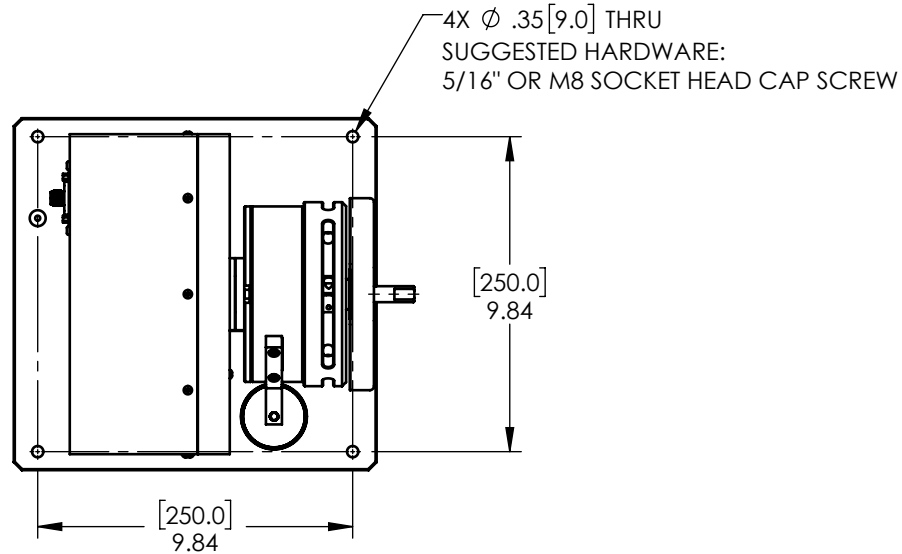
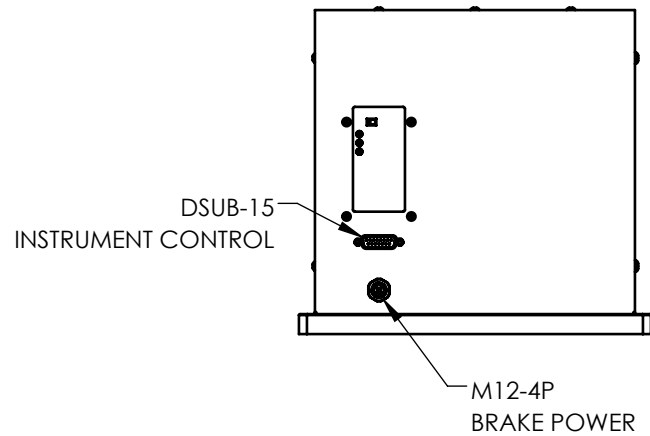


NOTE: DIMENSIONS IN [] ARE mm.


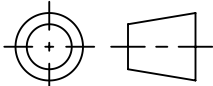
MATERIAL: -	DESIGN	-	-	 MAGTROL INC. 70 GARDENVILLE PKWY, W. BUFFALO, NEW YORK 14224-1322	TITLE: HD-700 DYNAMOMETER	
	DRAWN	AMH	10/04/2021			
FINISH: -	CHECKED	JEF	10/08/2021	UNLESS OTHERWISE SPECIFIED: DIMENSIONS ARE IN INCHES DIAMETERS CONCENTRIC: .003 TIR FACES PERPENDICULAR: .003 INTERPRETATION PER ASME Y14.5M-1994 REMOVE ALL BURRS AND BREAK SHARP EDGES .005/.010 X 45° INSIDE CORNERS TO BE R .02 MAX TOLERANCES: .XX ± .01 X/Y ± 1/64" .XXX ± .005 X° ± 1° SURFACE FINISH 125 RMS MAX		
THIRD ANGLE PROJECTION						
THIS DRAWING AND SPECIFICATION CONTAINS PROPRIETARY INFORMATION TO MAGTROL INC. ANY DISCLOSURE OR REPRODUCTION OF THIS DOCUMENT WITHOUT WRITTEN AUTHORIZATION FROM MAGTROL INC. IS EXPRESSLY PROHIBITED				DWG NO: HD-700-XC0-0XXXi	REV A	
				SIZE B	SCALE 1:6	SHEET # 2 OF 3



- NOTES:
- ENCLOSURE HIDDEN FOR CLARITY.
 - SHAFT FLAT IS PRESENT ON STANDARD SPEED DYNAMOMETER ONLY; HIGH SPEED VERSION IS A SMOOTH ROUND SHAFT.



NOTE: DIMENSIONS IN [] ARE mm.

MATERIAL: -	DESIGN	-	-	 MAGTROL INC. 70 GARDENVILLE PKWY, W. BUFFALO, NEW YORK 14224-1322
	DRAWN	AMH	10/04/2021	
FINISH: -	CHECKED	JEF	10/08/2021	TITLE: HD-700 DYNAMOMETER
THIRD ANGLE PROJECTION				
THIS DRAWING AND SPECIFICATION CONTAINS PROPRIETARY INFORMATION TO MAGTROL INC. ANY DISCLOSURE OR REPRODUCTION OF THIS DOCUMENT WITHOUT WRITTEN AUTHORIZATION FROM MAGTROL INC. IS EXPRESSLY PROHIBITED	UNLESS OTHERWISE SPECIFIED: DIMENSIONS ARE IN INCHES DIAMETERS CONCENTRIC: .003 TIR FACES PERPENDICULAR: .003 INTERPRETATION PER ASME Y14.5M-1994 REMOVE ALL BURRS AND BREAK SHARP EDGES .005/.010 X 45° INSIDE CORNERS TO BE R .02 MAX TOLERANCES: .XX ± .01 X/Y ± 1/64" .XXX ± .005 X° ± 1° SURFACE FINISH 125 RMS MAX			USED ON: - SIMILAR TO: -
				DWG NO: HD-700-XC0-0XXXi
	SIZE B	SCALE 1:6	SHEET # 3 OF 3	