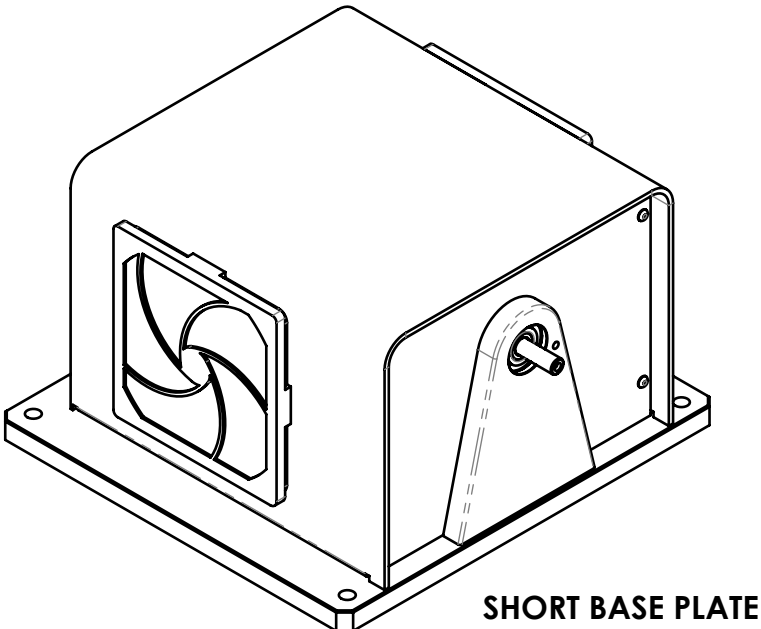
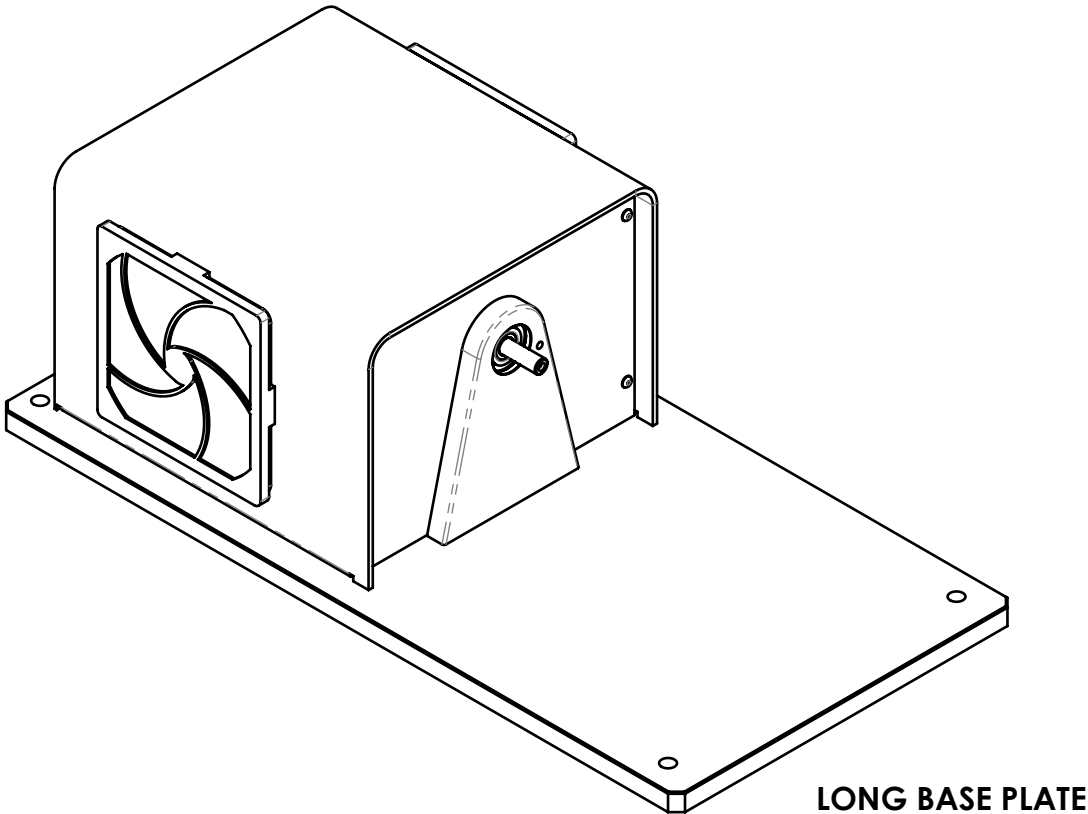

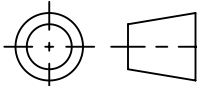
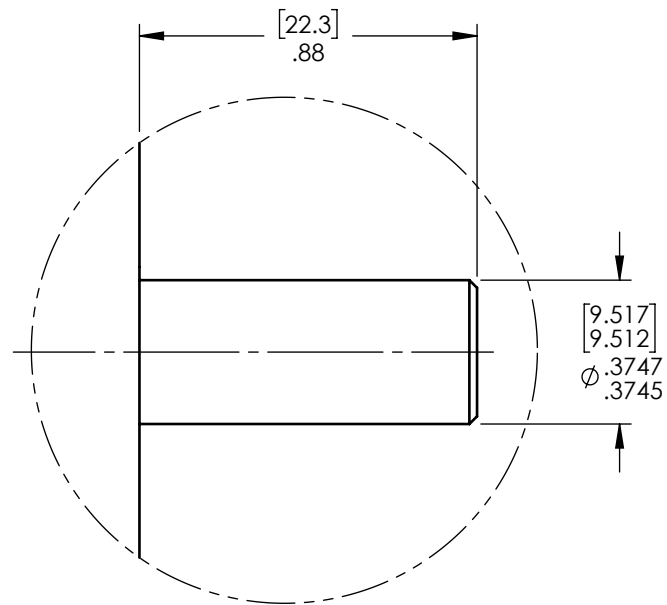


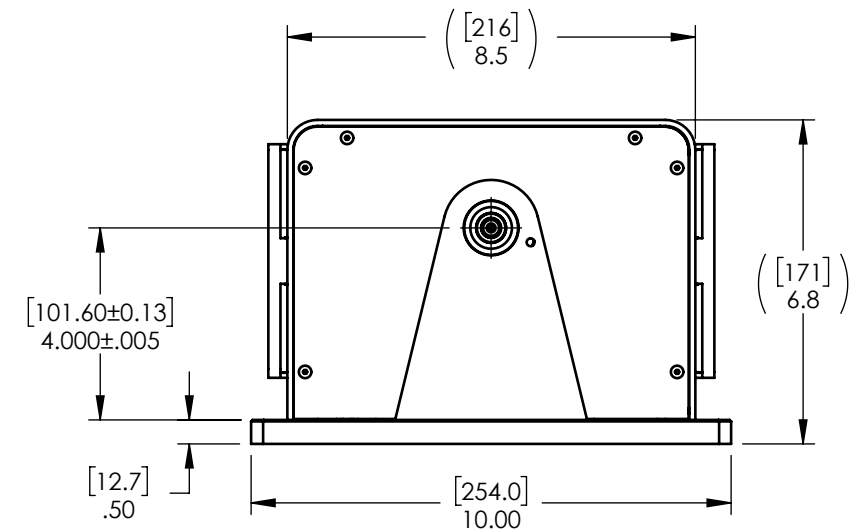
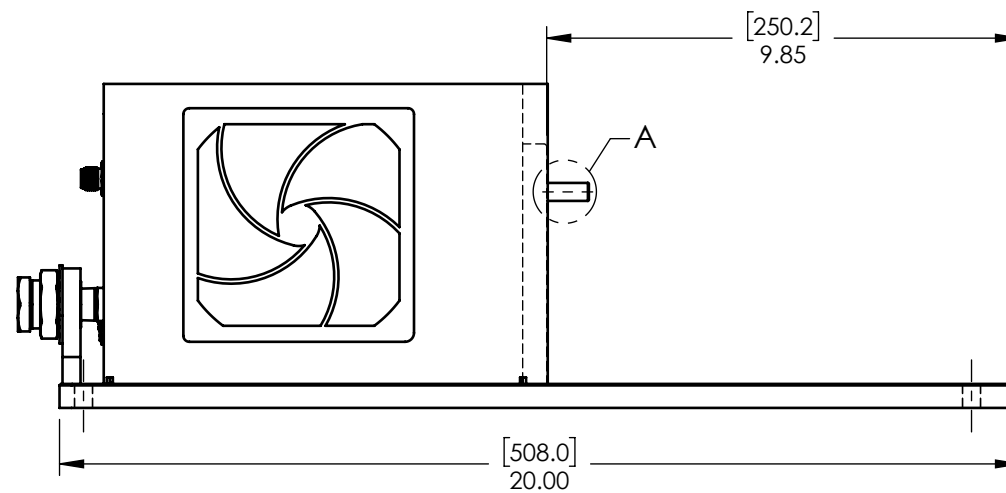
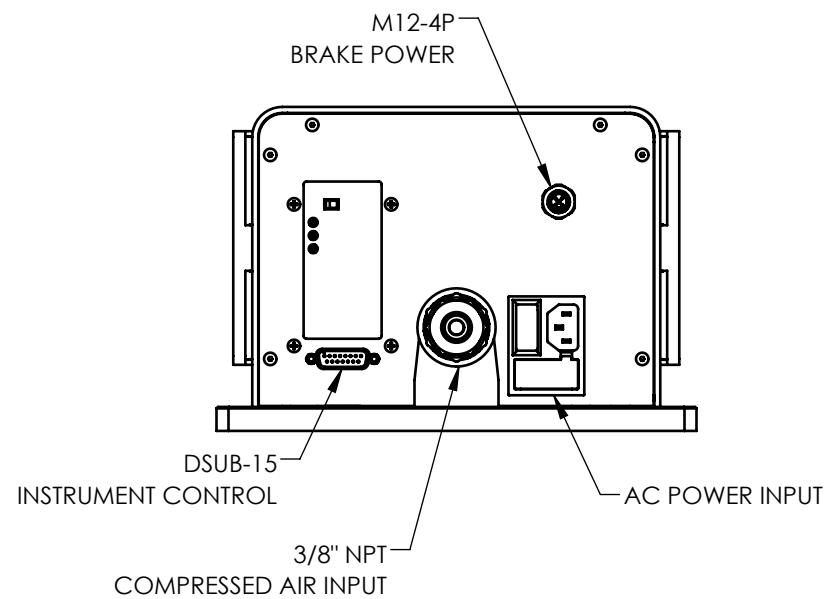
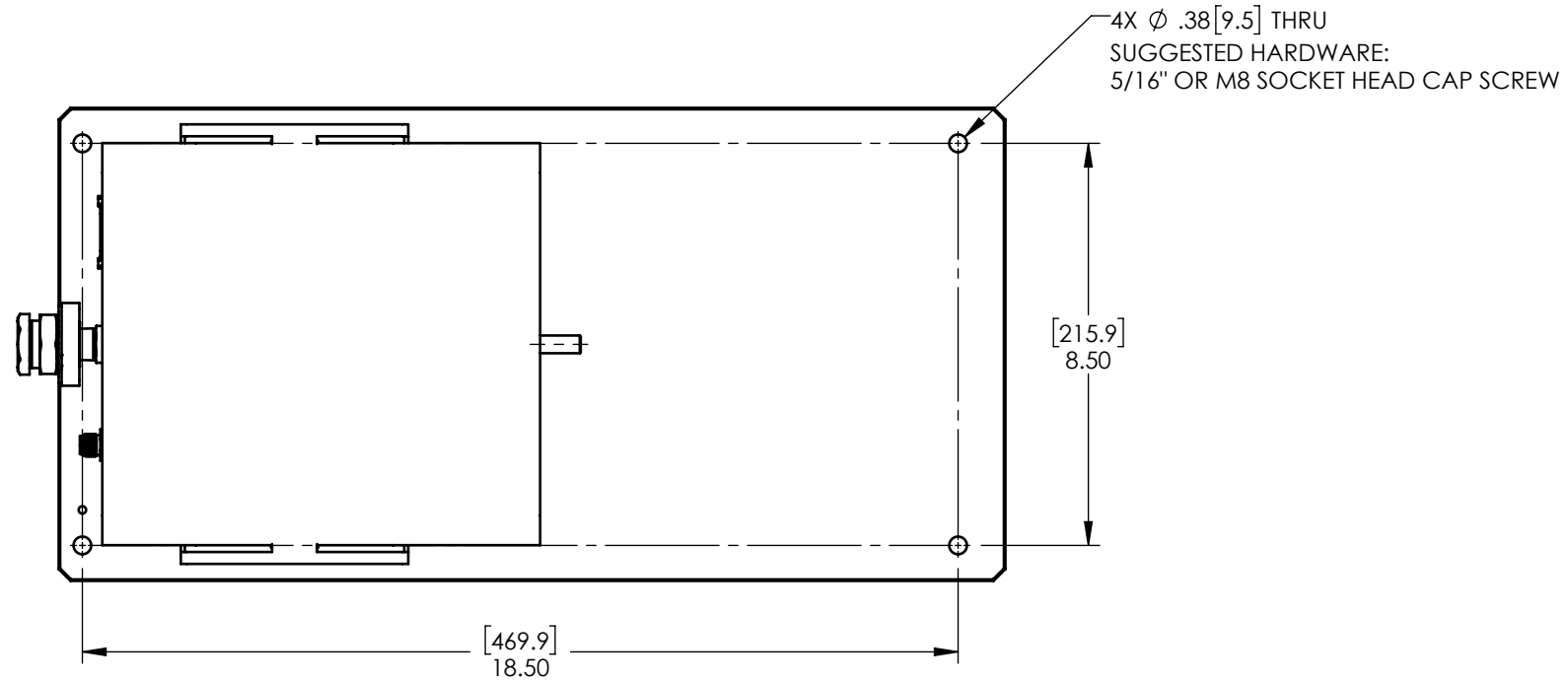
MODEL	MAXIMUM TORQUE RANGE	DRAG TORQUE DE-ENERGIZED AT 1000 RPM	NOMINAL INPUT INERTIA	MAXIMUM POWER		MAXIMUM SPEED	COOLING	* COMPRESSED AIR IS REQUIRED TO ACHIEVE THE STATED KINETIC POWER RATINGS. REGULATOR AND FILTER IS PROVIDED AS STANDARD EQUIPMENT.
				5-MINUTE	CONTINUOUS			
HD-515-XCX-0XXX	1.7 N · m	10 mN · m	182 x 10 <sup>-6</sup> kg · m <sup>2</sup>	1,500 W	900 W	25,000 rpm	COMPRESSED AIR* (10 cfm @ 4 psi)	
	240 oz · in	1.4 oz · in	134 x 10 <sup>-6</sup> lb · ft · s <sup>2</sup>	2.0 hp	1.2 hp			




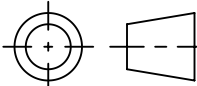
MATERIAL:  -	DESIGN	-	-	 <b>MAGTROL INC.</b> 70 GARDENVILLE PKWY, W. BUFFALO, NEW YORK 14224-1322	TITLE:  HD-515 DYNAMOMETER			
	DRAWN	AMH	09/20/2021					
FINISH:  -	CHECKED	JEF	09/24/2021	UNLESS OTHERWISE SPECIFIED: DIMENSIONS ARE IN INCHES DIAMETERS CONCENTRIC: .003 TIR FACES PERPENDICULAR: .003 INTERPRETATION PER ASME Y14.5M-1994 REMOVE ALL BURRS AND BREAK SHARP EDGES .005/.010 X 45° INSIDE CORNERS TO BE R .02 MAX TOLERANCES: .XX ± .01                    X/Y ± 1/64" .XXX ± .005                X° ± 1° SURFACE FINISH 125 RMS MAX				
THIRD ANGLE PROJECTION								
THIS DRAWING AND SPECIFICATION CONTAINS PROPRIETARY INFORMATION TO MAGTROL INC. ANY DISCLOSURE OR REPRODUCTION OF THIS DOCUMENT WITHOUT WRITTEN AUTHORIZATION FROM MAGTROL INC. IS EXPRESSLY PROHIBITED				DWG NO:  HD-515-XCX-0XXXi		REV  B		
SIZE  B		SCALE  1:4		SHEET #  1 OF 3				

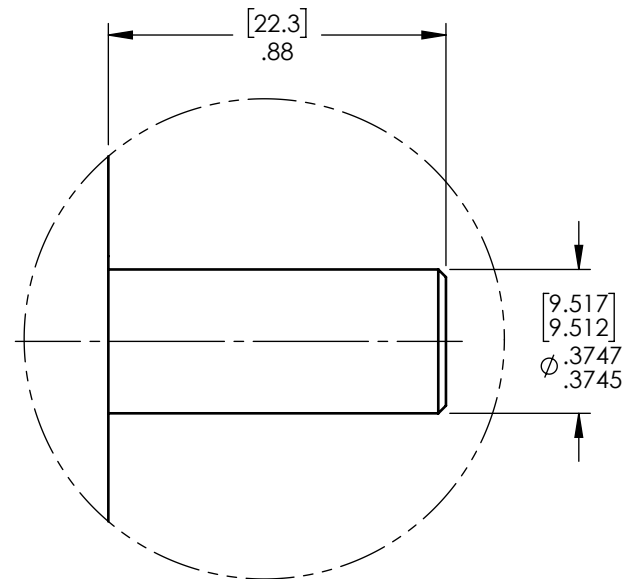


DETAIL A  
SCALE 2 : 1  
(ENCLOSURE HIDDEN FOR CLARITY)

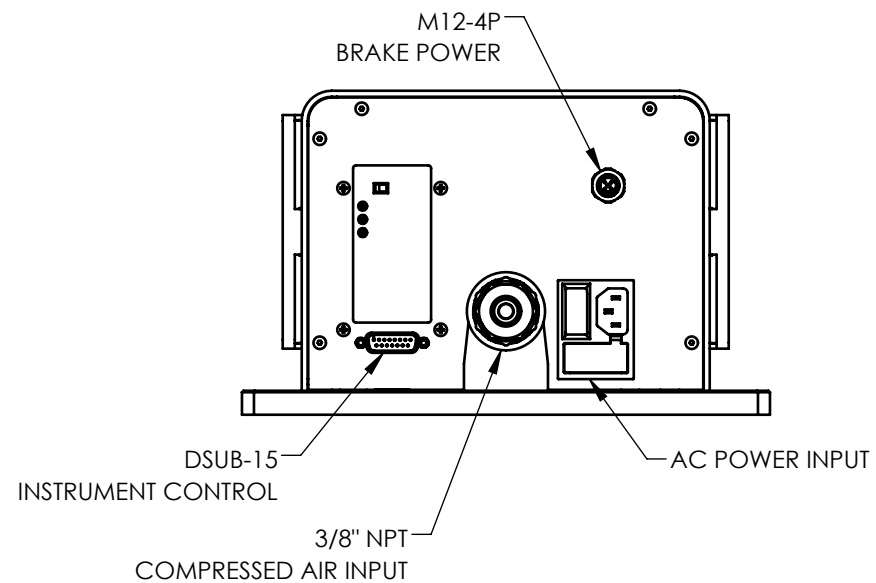
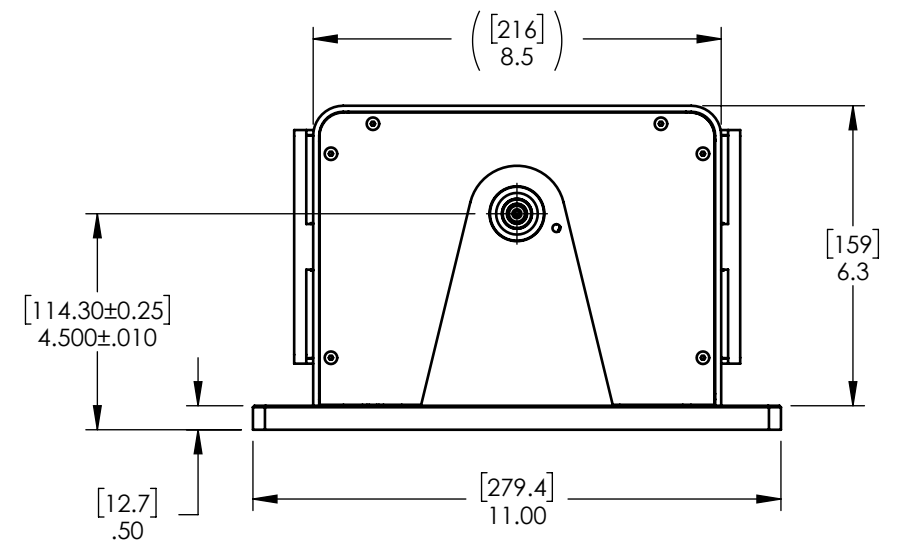
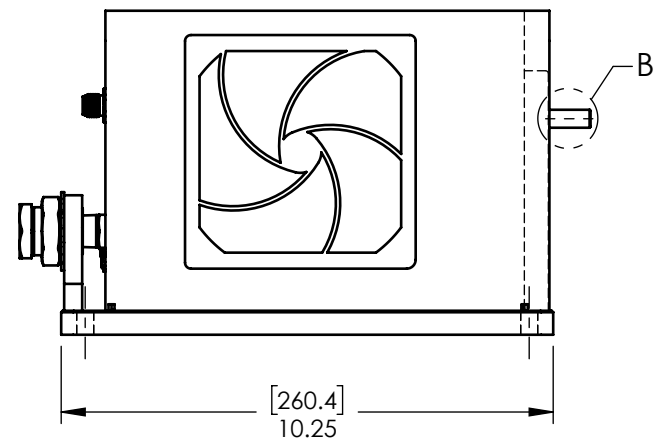
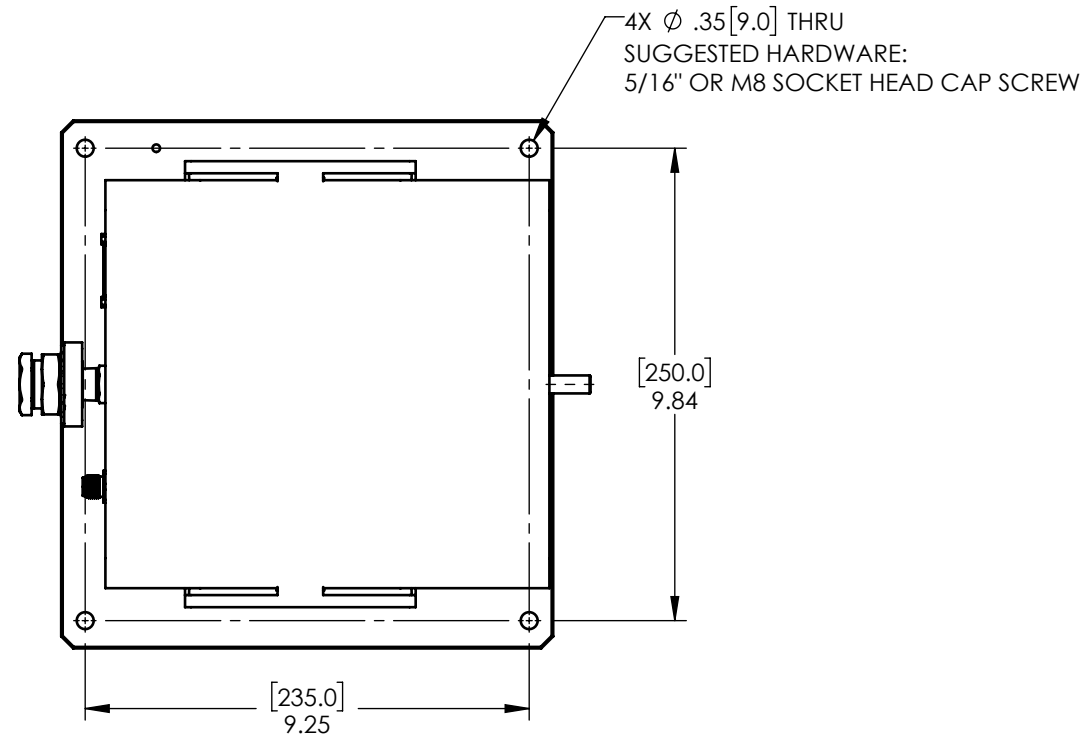


NOTE: DIMENSIONS IN [ ] ARE mm.


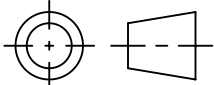
MATERIAL:	-	DESIGN	-	-	 <div>MAGTROL INC. 70 GARDENVILLE PKWY, W. BUFFALO, NEW YORK 14224-1322</div>
FINISH:	-	DRAWN	AMH	09/20/2021	
		CHECKED	JEF	09/24/2021	
THIRD ANGLE PROJECTION		UNLESS OTHERWISE SPECIFIED: DIMENSIONS ARE IN INCHES DIAMETERS CONCENTRIC: .003 TIR FACES PERPENDICULAR: .003 INTERPRETATION PER ASME Y14.5M-1994 REMOVE ALL BURRS AND BREAK SHARP EDGES .005/.010 X 45° INSIDE CORNERS TO BE R .02 MAX TOLERANCES: .XX ± .01        X/Y ± 1/64" .XXX ± .005      X° ± 1° SURFACE FINISH 125 RMS MAX			TITLE:  HD-515 DYNAMOMETER
THIS DRAWING AND SPECIFICATION CONTAINS PROPRIETARY INFORMATION TO MAGTROL INC. ANY DISCLOSURE OR REPRODUCTION OF THIS DOCUMENT WITHOUT WRITTEN AUTHORIZATION FROM MAGTROL INC. IS EXPRESSLY PROHIBITED		USED ON: -  SIMILAR TO: -  DWG NO:  HD-515-XCX-0XXXi			REV  B
		SIZE  B	SCALE  1:4	SHEET #  2 OF 3	



DETAIL B  
SCALE 2 : 1  
(ENCLOSURE HIDDEN FOR CLARITY)



NOTE: DIMENSIONS IN [ ] ARE mm.

MATERIAL:		DESIGN	-	-	 <div>MAGTROL INC. 70 GARDENVILLE PKWY, W. BUFFALO, NEW YORK 14224-1322</div>	
		DRAWN	AMH	09/20/2021		
FINISH:		CHECKED	JEF	09/24/2021		
		<div>UNLESS OTHERWISE SPECIFIED: DIMENSIONS ARE IN INCHES DIAMETERS CONCENTRIC: .003 TIR FACES PERPENDICULAR: .003 INTERPRETATION PER ASME Y14.5M-1994 REMOVE ALL BURRS AND BREAK SHARP EDGES .005/.010 X 45° INSIDE CORNERS TO BE R .02 MAX TOLERANCES:     .XX ± .01        X/Y ± 1/64"     .XXX ± .005      X° ± 1° SURFACE FINISH 125 RMS MAX</div>			TITLE:  HD-515 DYNAMOMETER	
THIRD ANGLE PROJECTION 					USED ON: -  SIMILAR TO: -	
THIS DRAWING AND SPECIFICATION CONTAINS PROPRIETARY INFORMATION TO MAGTROL INC. ANY DISCLOSURE OR REPRODUCTION OF THIS DOCUMENT WITHOUT WRITTEN AUTHORIZATION FROM MAGTROL INC. IS EXPRESSLY PROHIBITED		DWG NO:			REV	
		HD-515-XCX-0XXXi			B	
		SIZE	SCALE	SHEET #		
		B	1:4	3 OF 3		