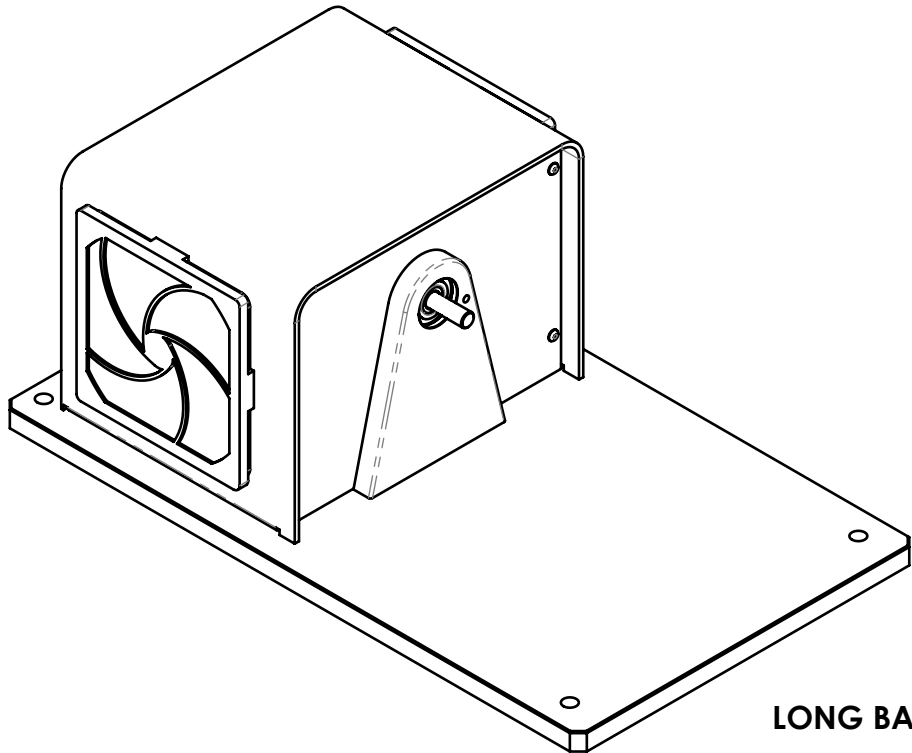
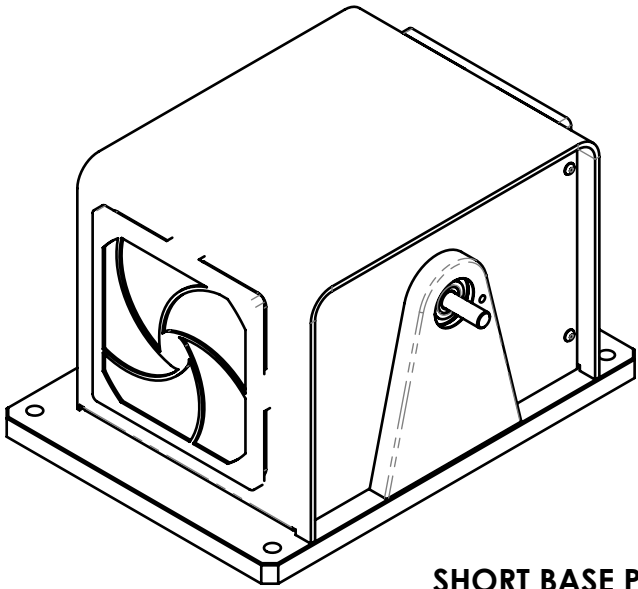



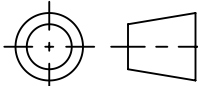
MODEL	MAXIMUM TORQUE RANGE	DRAG TORQUE DE-ENERGIZED AT 1000 RPM	NOMINAL INPUT INERTIA	MAXIMUM POWER		MAXIMUM SPEED	COOLING	* COMPRESSED AIR IS REQUIRED TO ACHIEVE THE STATED KINETIC POWER RATINGS. REGULATOR AND FILTER IS PROVIDED AS STANDARD EQUIPMENT.
				5-MINUTE	CONTINUOUS			
HD-510-XCX-0XXX	0.85 N·m	5.0 mN·m	90.6 x 10 ⁻⁶ kg·m ²	750 W	375 W	25,000 rpm	COMPRESSED AIR* (7 cfm @ 1.75 psi)	
	120 oz·in	.71 oz·in	66.8 x 10 ⁻⁶ lb·ft·s ²	1.0 hp	.50 hp			

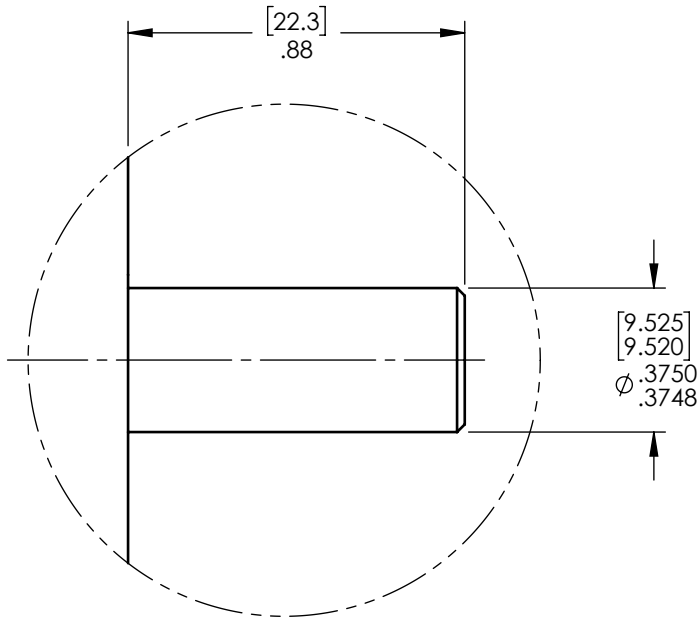


LONG BASE PLATE

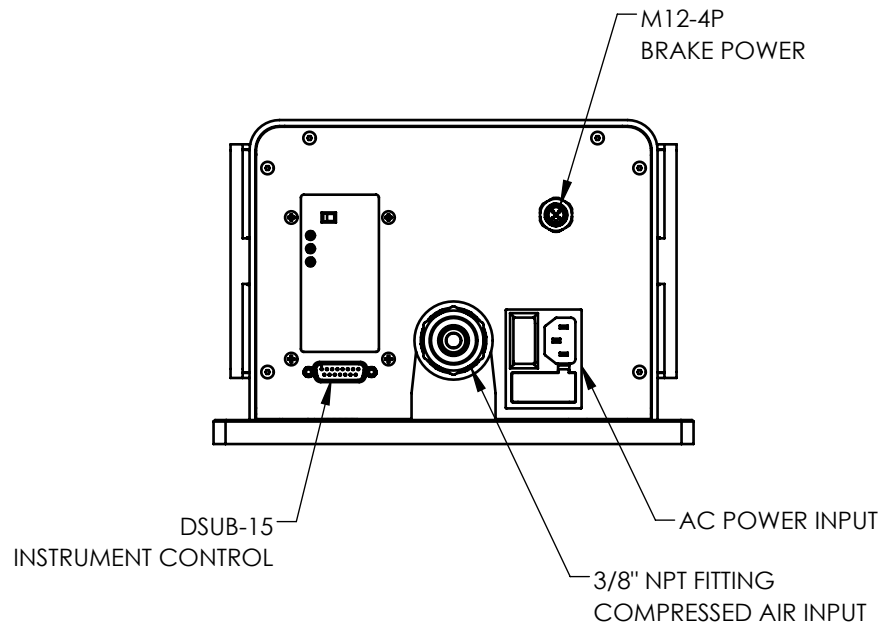
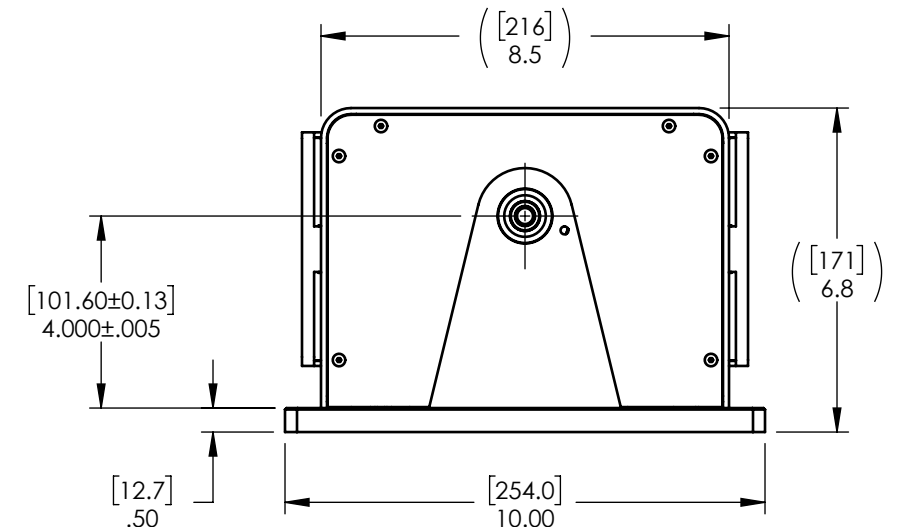
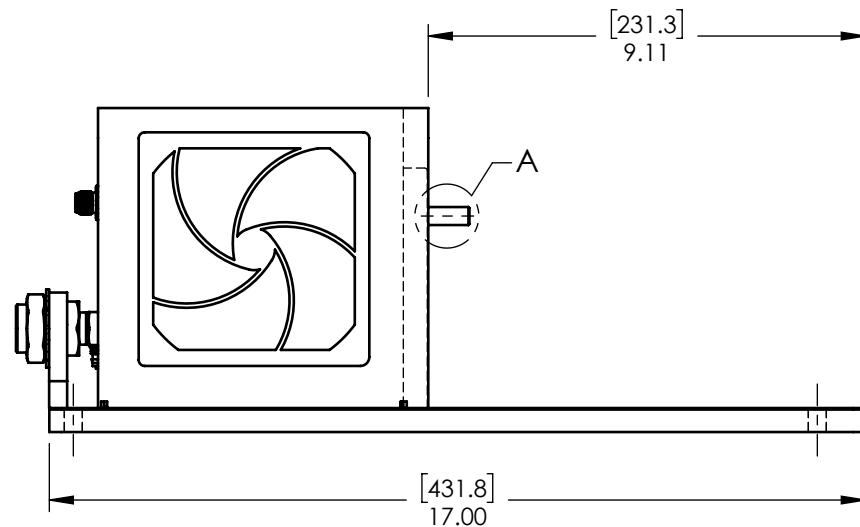
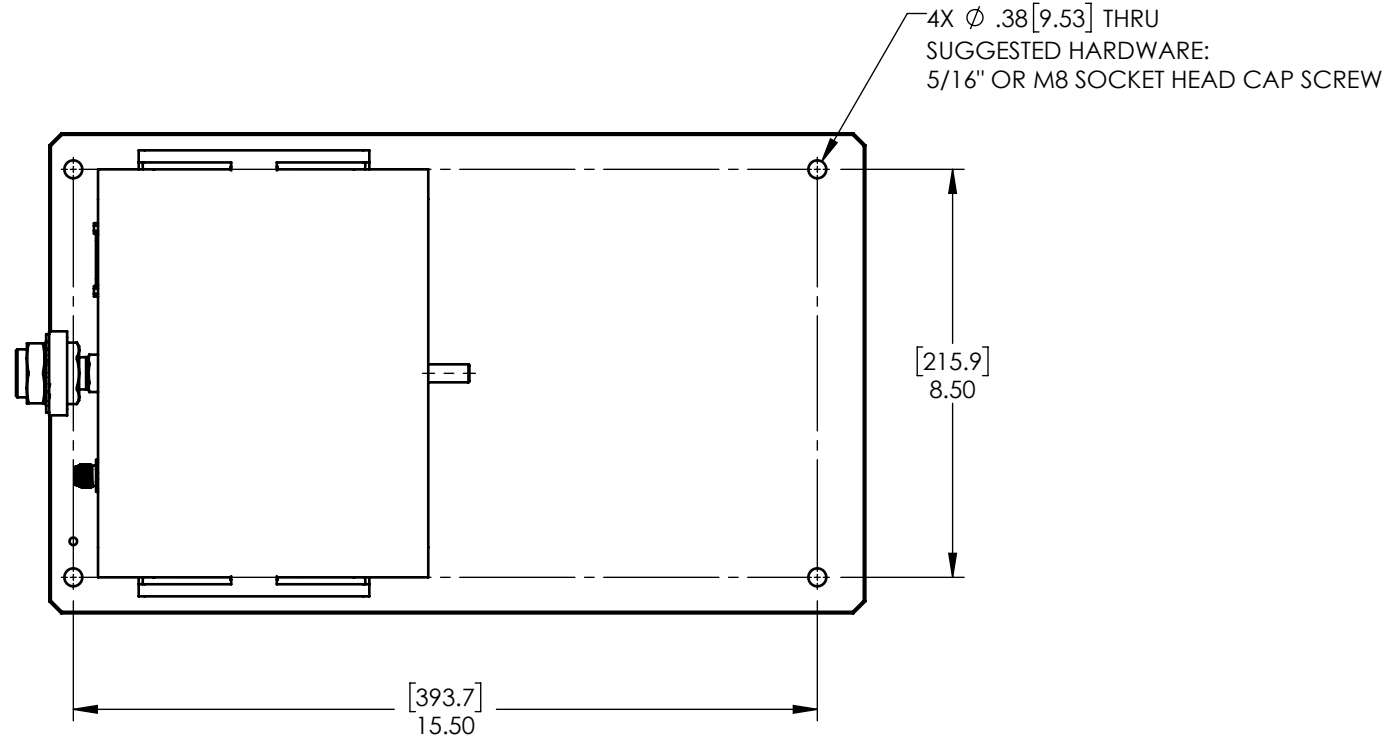


SHORT BASE PLATE


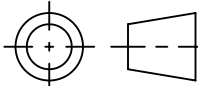
MATERIAL: -	DESIGN	-	-	 MAGTROL INC. 70 GARDENVILLE PKWY, W. BUFFALO, NEW YORK 14224-1322	TITLE: HD-510 DYNAMOMETER	
	DRAWN	AMH	09/08/2021			
FINISH: -	CHECKED	JEF	09/09/2021			
THIRD ANGLE PROJECTION 	UNLESS OTHERWISE SPECIFIED: DIMENSIONS ARE IN INCHES DIAMETERS CONCENTRIC: .003 TIR FACES PERPENDICULAR: .003 INTERPRETATION PER ASME Y14.5M-1994 REMOVE ALL BURRS AND BREAK SHARP EDGES .005/.010 X 45° INSIDE CORNERS TO BE R .02 MAX TOLERANCES: .XX ± .01 X/Y ± 1/64" .XXX ± .005 X° ± 1° SURFACE FINISH 125 RMS MAX			USED ON: -		
				SIMILAR TO: -		
THIS DRAWING AND SPECIFICATION CONTAINS PROPRIETARY INFORMATION TO MAGTROL INC. ANY DISCLOSURE OR REPRODUCTION OF THIS DOCUMENT WITHOUT WRITTEN AUTHORIZATION FROM MAGTROL INC. IS EXPRESSLY PROHIBITED				DWG NO:	HD-510-XCX-0XXXi	REV A
				SIZE B	SCALE 1:4	SHEET # 1 OF 3

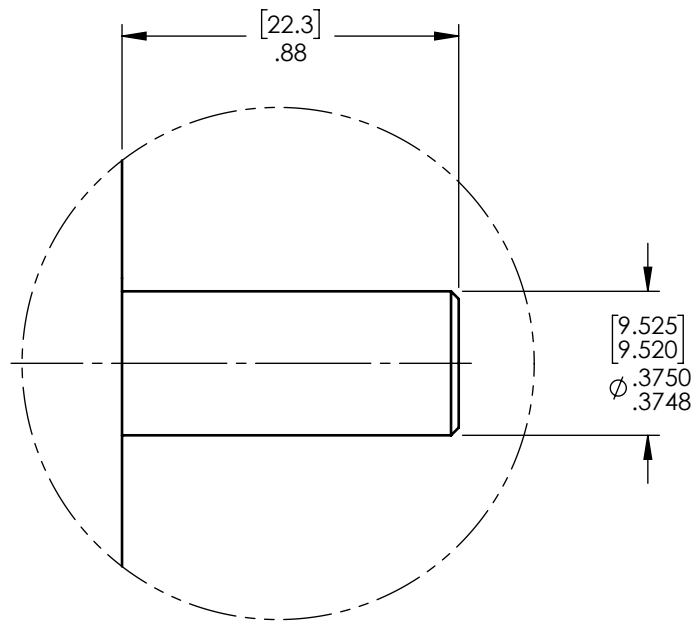


DETAIL A
SCALE 2 : 1
(SHOWN WITH ENCLOSURE HIDDEN)

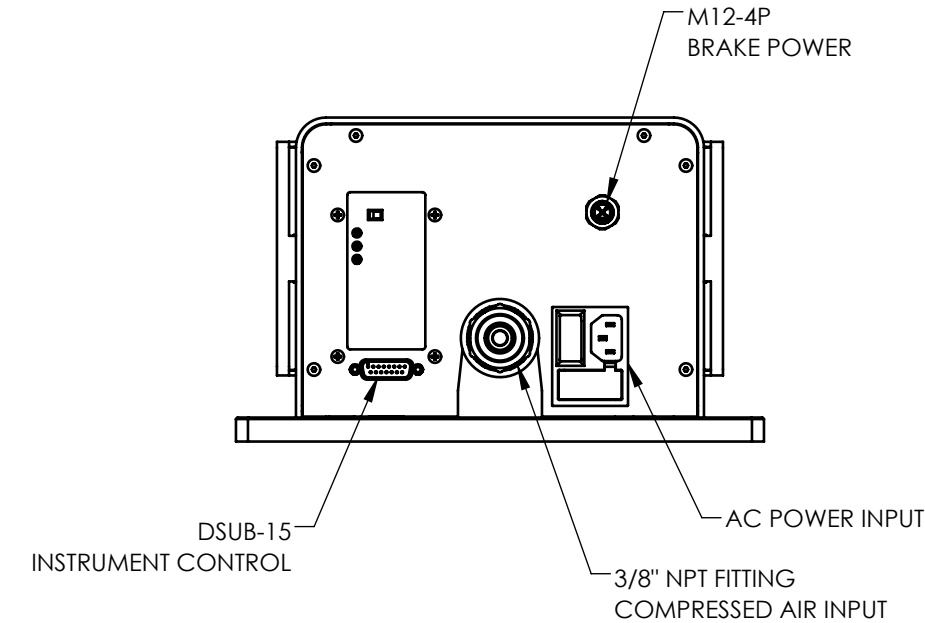
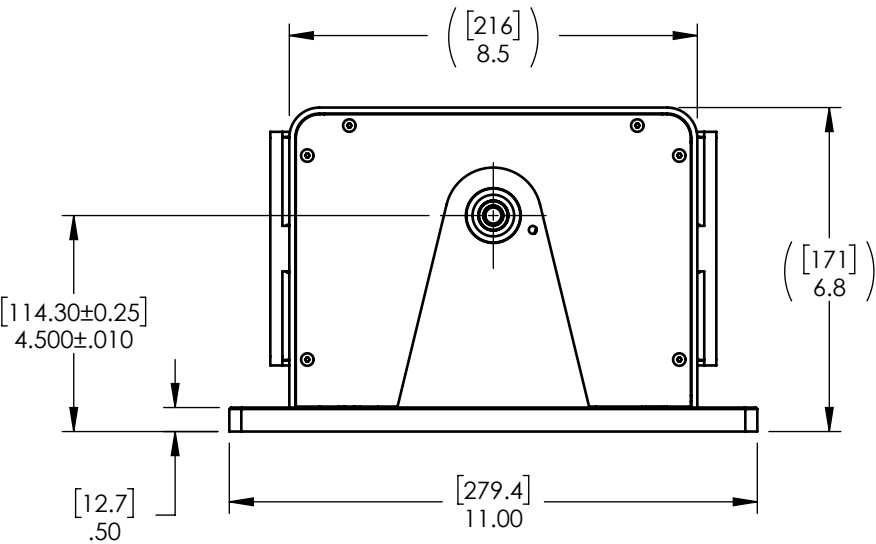
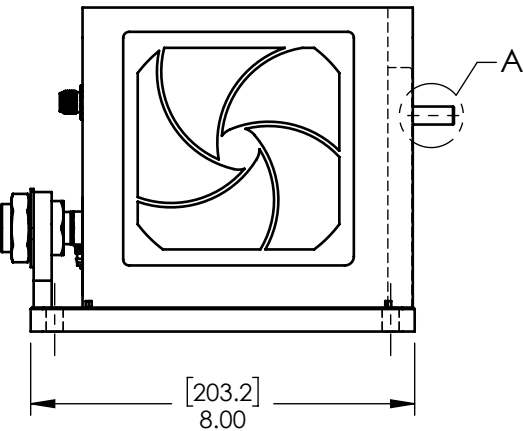
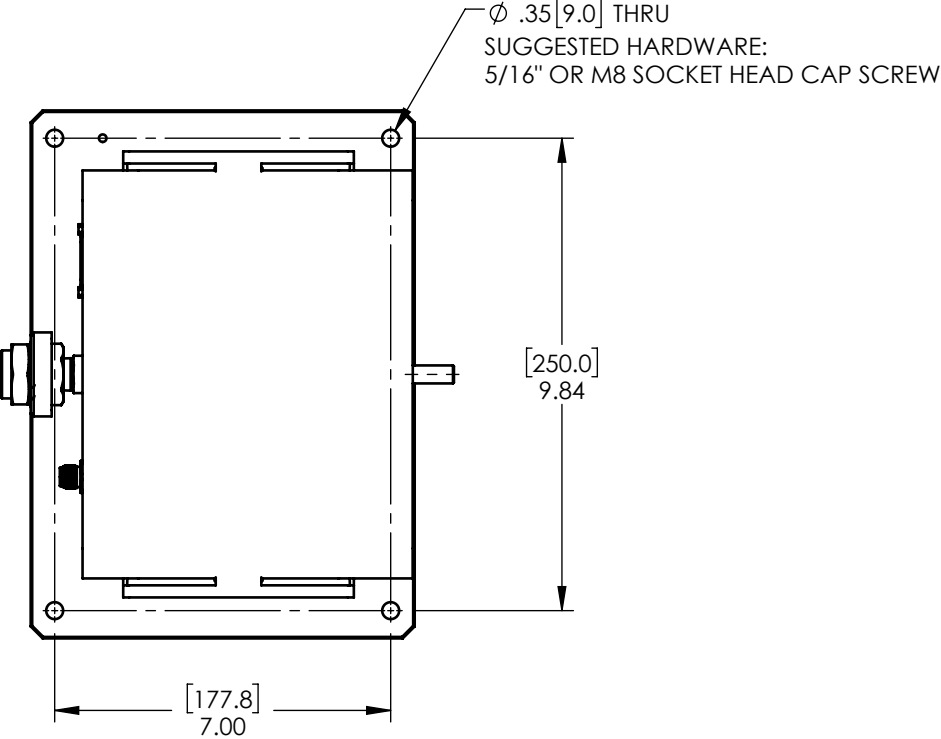


NOTE: DIMENSIONS IN [] ARE mm.


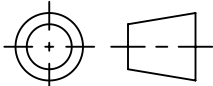
MATERIAL:	-	DESIGN	-	-	 MAGTROL INC. 70 GARDENVILLE PKWY, W. BUFFALO, NEW YORK 14224-1322	TITLE: HD-510 DYNAMOMETER
FINISH:	-	DRAWN	AMH	09/08/2021		
		CHECKED	JEF	09/09/2021		
THIRD ANGLE PROJECTION		UNLESS OTHERWISE SPECIFIED: DIMENSIONS ARE IN INCHES DIAMETERS CONCENTRIC: .003 TIR FACES PERPENDICULAR: .003 INTERPRETATION PER ASME Y14.5M-1994 REMOVE ALL BURRS AND BREAK SHARP EDGES .005/.010 X 45° INSIDE CORNERS TO BE R .02 MAX TOLERANCES: .XX ± .01 X/Y ± 1/64" .XXX ± .005 X° ± 1° SURFACE FINISH 125 RMS MAX			USED ON: - SIMILAR TO: -	
THIS DRAWING AND SPECIFICATION CONTAINS PROPRIETARY INFORMATION TO MAGTROL INC. ANY DISCLOSURE OR REPRODUCTION OF THIS DOCUMENT WITHOUT WRITTEN AUTHORIZATION FROM MAGTROL INC. IS EXPRESSLY PROHIBITED					DWG NO: HD-510-XCX-0XXXi	REV A
		SIZE B		SCALE 1:4	SHEET # 2 OF 3	



DETAIL A
SCALE 2 : 1
(SHOWN WITH ENCLOSURE HIDDEN)



NOTE: DIMENSIONS IN [] ARE mm.

MATERIAL: -	DESIGN	-	-	 MAGTROL INC. 70 GARDENVILLE PKWY, W. BUFFALO, NEW YORK 14224-1322	TITLE: HD-510 DYNAMOMETER		
	DRAWN	AMH	09/08/2021				
FINISH: -	CHECKED	JEF	09/09/2021	UNLESS OTHERWISE SPECIFIED: DIMENSIONS ARE IN INCHES DIAMETERS CONCENTRIC: .003 TIR FACES PERPENDICULAR: .003 INTERPRETATION PER ASME Y14.5M-1994 REMOVE ALL BURRS AND BREAK SHARP EDGES .005/.010 X 45° INSIDE CORNERS TO BE R .02 MAX TOLERANCES: .XX ± .01 X/Y ± 1/64" .XXX ± .005 X° ± 1° SURFACE FINISH 125 RMS MAX	USED ON: - SIMILAR TO: -	DWG NO: HD-510-XCX-0XXXi	REV A
THIRD ANGLE PROJECTION							
THIS DRAWING AND SPECIFICATION CONTAINS PROPRIETARY INFORMATION TO MAGTROL INC. ANY DISCLOSURE OR REPRODUCTION OF THIS DOCUMENT WITHOUT WRITTEN AUTHORIZATION FROM MAGTROL INC. IS EXPRESSLY PROHIBITED				SIZE B	SCALE 1:4	SHEET # 3 OF 3	