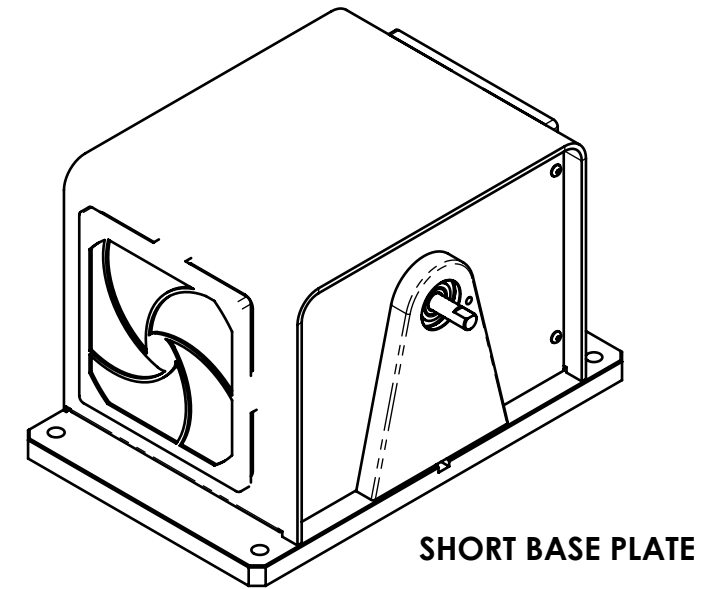
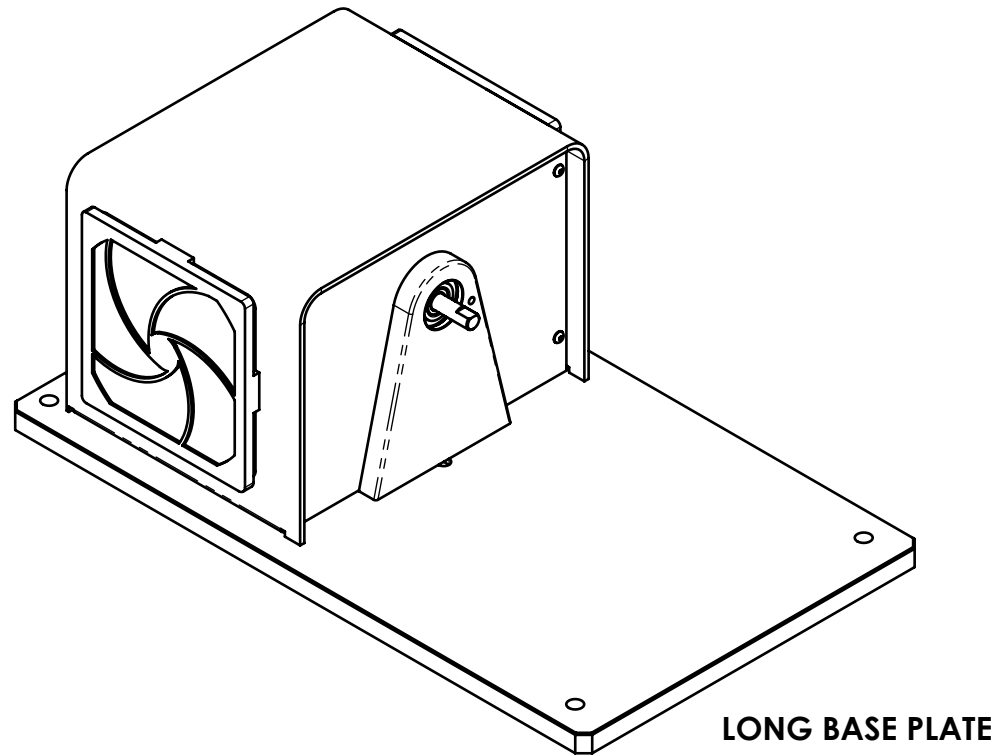

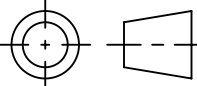
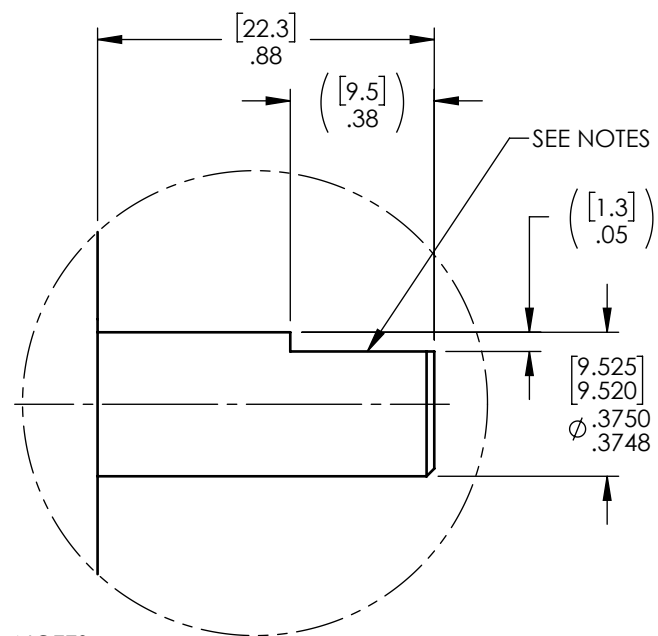


| MODEL | MAXIMUM TORQUE RANGE | DRAG TORQUE DE-ENERGIZED AT 1000 RPM | NOMINAL INPUT INERTIA | MAXIMUM POWER | | MAXIMUM SPEED | COOLING |
|-----------------|-----------------------|--------------------------------------|---|-----------------|----------------|---------------|------------|
| | | | | 5-MINUTE | CONTINUOUS | | |
| HD-500-XCX-0XXX | 0.85 N·m 120 oz·in | 5.0 mN·m .70 oz·in | 90.6 x 10 ⁻⁶ kg·m ² 66.8 x 10 ⁻⁶ lb·ft·s ² | 400 W .53 hp | 80 W .10 hp | 25,000 rpm | CONVECTION |



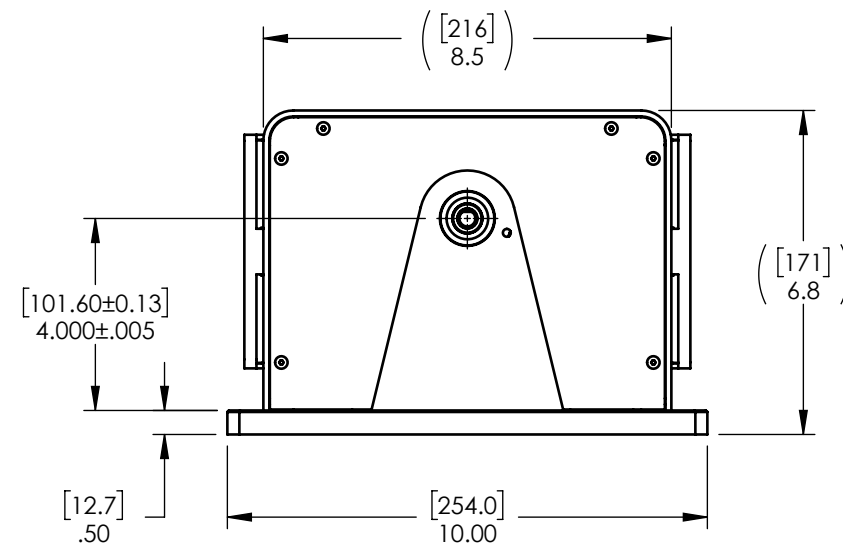
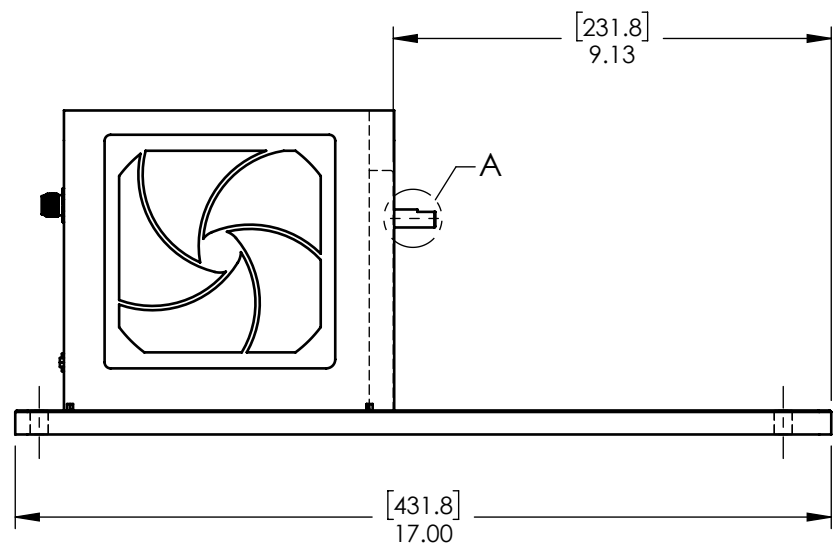
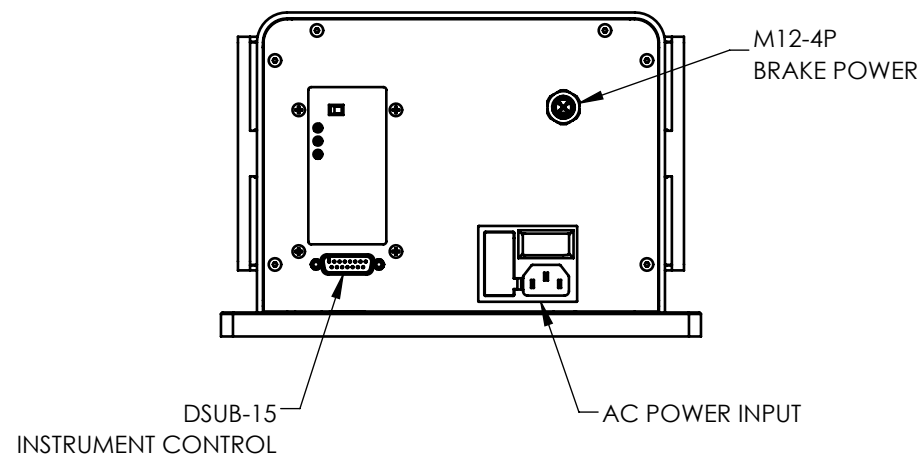
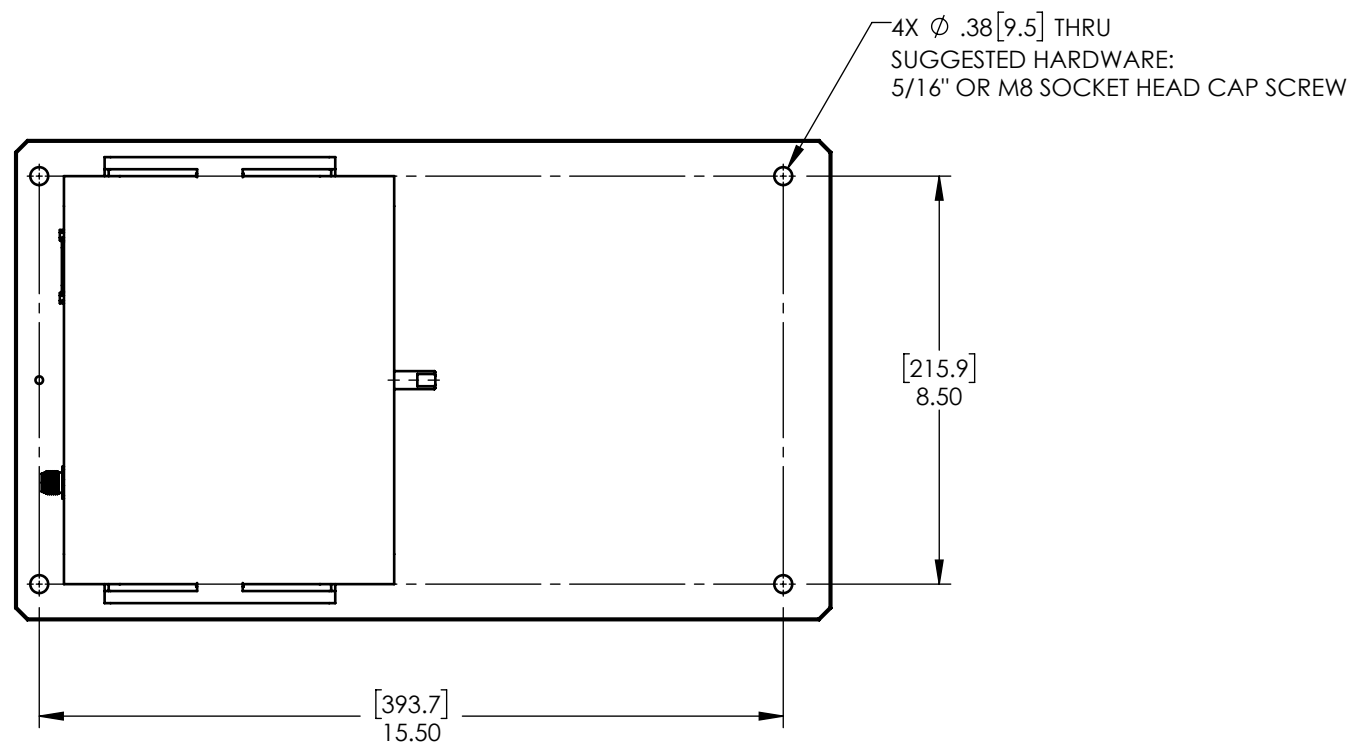
| | | | | |
|---|--|-----|------------|--|
| MATERIAL: | DESIGN | - | - |  MAGTROL INC. 70 GARDENVILLE PKWY, W. BUFFALO, NEW YORK 14224-1322 |
| | DRAWN | AMH | 08/16/2021 | |
| FINISH: | CHECKED | JEF | 08/30/2021 | TITLE: |
| THIRD ANGLE PROJECTION |  | | | HD-500 DYNAMOMETER |
| THIS DRAWING AND SPECIFICATION CONTAINS PROPRIETARY INFORMATION TO MAGTROL INC. ANY DISCLOSURE OR REPRODUCTION OF THIS DOCUMENT WITHOUT WRITTEN AUTHORIZATION FROM MAGTROL INC. IS EXPRESSLY PROHIBITED | UNLESS OTHERWISE SPECIFIED: DIMENSIONS ARE IN INCHES DIAMETERS CONCENTRIC: .003 TIR FACES PERPENDICULAR: .003 INTERPRETATION PER ASME Y14.5M-1994 REMOVE ALL BURRS AND BREAK SHARP EDGES .005/.010 X 45° INSIDE CORNERS TO BE R .02 MAX TOLERANCES: .XX ± .01 X/Y ± 1/64" .XXX ± .005 X° ± 1° SURFACE FINISH 125 RMS MAX | | | USED ON: - SIMILAR TO: - DWG NO: |
| | | | | HD-500-XCX-0XXXi SIZE: B SCALE: 1:4 SHEET #: 1 OF 3 REV: A |

DETAIL A
SCALE 2 : 1


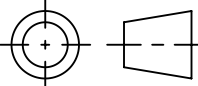


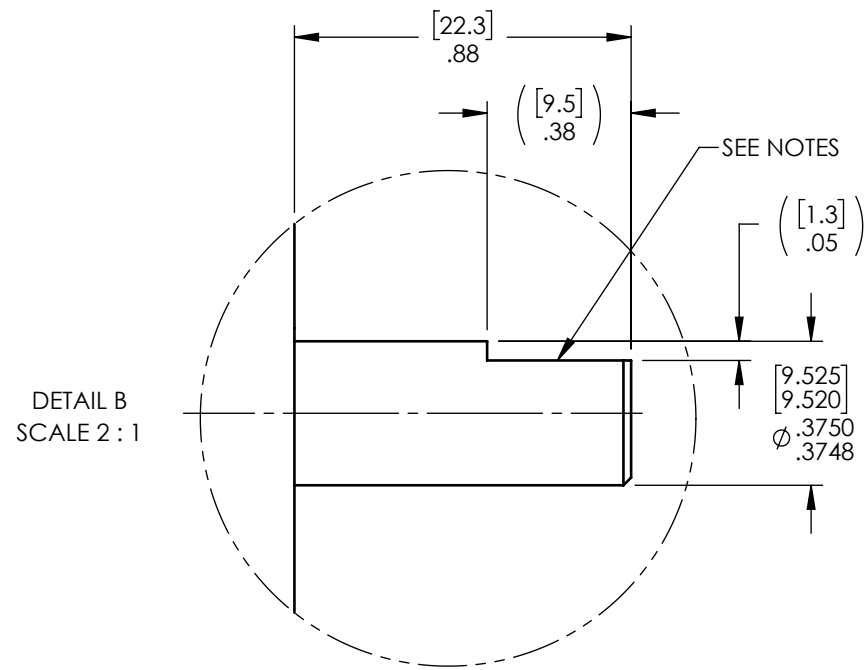
NOTES:

- ENCLOSURE HIDDEN FOR CLARITY.
- SHAFT FLAT IS PRESENT ON STANDARD SPEED DYNAMOMETER ONLY; HIGH SPEED VERSION IS A SMOOTH ROUND SHAFT.



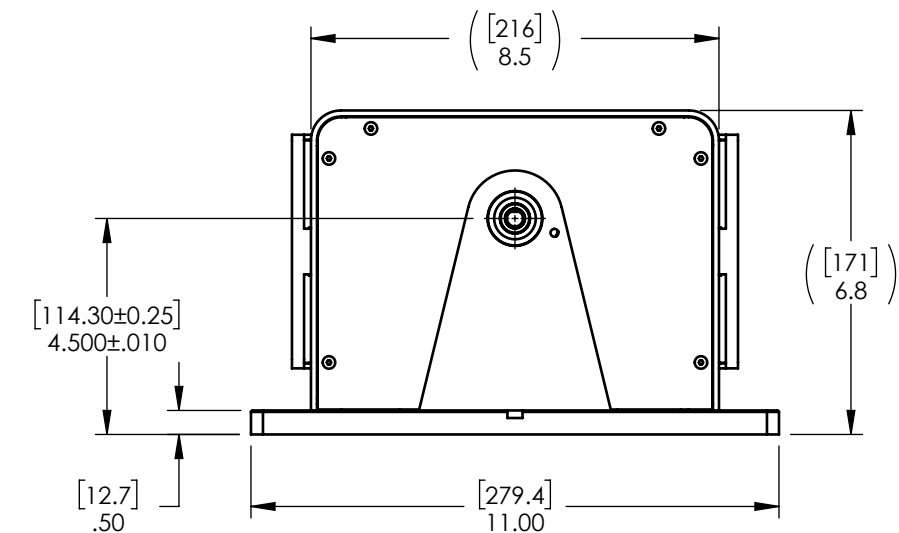
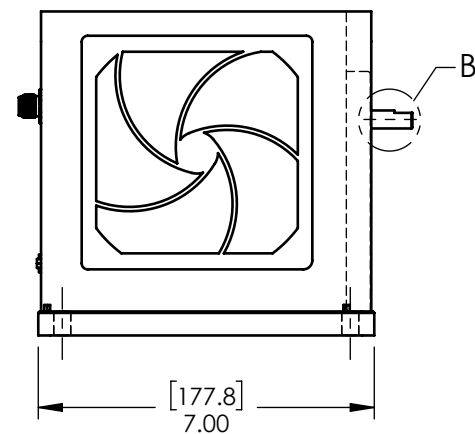
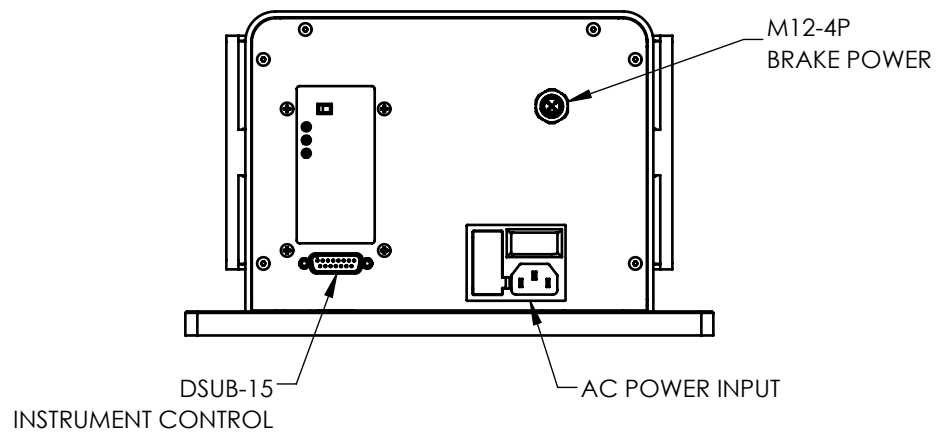
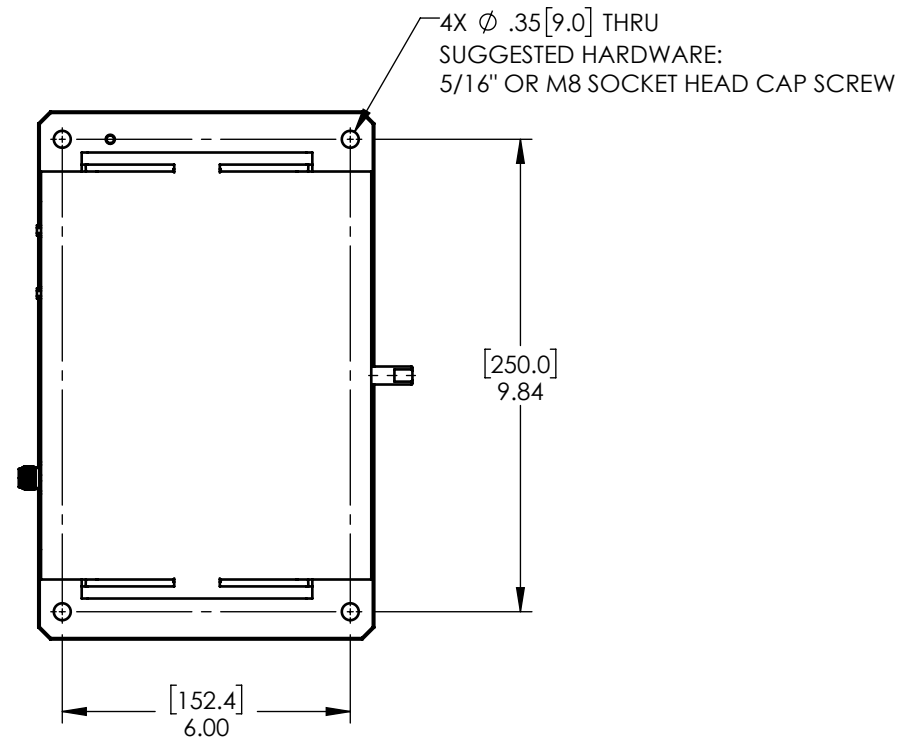
NOTE: DIMENSIONS IN [] ARE mm.

| | | | | | | |
|---|---|--|-------|------------|--|--------------------|
| MATERIAL: | - | DESIGN | - | - |  MAGTROL INC. 70 GARDENVILLE PKWY, W. BUFFALO, NEW YORK 14224-1322 | |
| FINISH: | - | DRAWN | AMH | 08/16/2021 | | |
| | | CHECKED | JEF | 08/30/2021 | | |
| THIRD ANGLE PROJECTION |  | UNLESS OTHERWISE SPECIFIED: DIMENSIONS ARE IN INCHES DIAMETERS CONCENTRIC: .003 TIR FACES PERPENDICULAR: .003 INTERPRETATION PER ASME Y14.5M-1994 REMOVE ALL BURRS AND BREAK SHARP EDGES .005/.010 X 45° INSIDE CORNERS TO BE R .02 MAX TOLERANCES: .XX ± .01 X/Y ± 1/64" .XXX ± .005 X° ± 1° SURFACE FINISH 125 RMS MAX | | | TITLE: | HD-500 DYNAMOMETER |
| THIS DRAWING AND SPECIFICATION CONTAINS PROPRIETARY INFORMATION TO MAGTROL INC. ANY DISCLOSURE OR REPRODUCTION OF THIS DOCUMENT WITHOUT WRITTEN AUTHORIZATION FROM MAGTROL INC. IS EXPRESSLY PROHIBITED | | | | | USED ON: - | |
| | | | | | SIMILAR TO: - | |
| | | | | | DWG NO: | HD-500-XCX-0XXXi |
| | | | | | REV | A |
| | | SIZE | SCALE | SHEET # | | |
| | | B | 1:4 | 2 OF 3 | | |


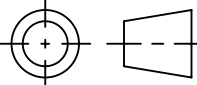


NOTES:

- ENCLOSURE HIDDEN FOR CLARITY.
- SHAFT FLAT IS PRESENT ON STANDARD SPEED DYNAMOMETER ONLY; HIGH SPEED VERSION IS A SMOOTH ROUND SHAFT.



NOTE: DIMENSIONS IN [] ARE mm.

| | | | | | |
|--|--|-----|------------|--|------------------------------|
| MATERIAL: - | DESIGN | - | - |  MAGTROL INC. 70 GARDENVILLE PKWY, W. BUFFALO, NEW YORK 14224-1322 | TITLE: HD-500 DYNAMOMETER |
| | DRAWN | AMH | 08/16/2021 | | |
| FINISH: - | CHECKED | JEF | 08/30/2021 | USED ON: - | REV A |
| | THIRD ANGLE PROJECTION  | | | SIMILAR TO: - | |
| UNLESS OTHERWISE SPECIFIED: DIMENSIONS ARE IN INCHES DIAMETERS CONCENTRIC: .003 TIR FACES PERPENDICULAR: .003 INTERPRETATION PER ASME Y14.5M-1994 REMOVE ALL BURRS AND BREAK SHARP EDGES .005/.010 X 45° INSIDE CORNERS TO BE R .02 MAX TOLERANCES: .XX ± .01 X/Y ± 1/64" .XXX ± .005 X° ± 1° SURFACE FINISH 125 RMS MAX | | | | DWG NO: HD-500-XCX-0XXXi | SIZE B |
| THIS DRAWING AND SPECIFICATION CONTAINS PROPRIETARY INFORMATION TO MAGTROL INC. ANY DISCLOSURE OR REPRODUCTION OF THIS DOCUMENT WITHOUT WRITTEN AUTHORIZATION FROM MAGTROL INC. IS EXPRESSLY PROHIBITED | | | | SCALE 1:4 | SHEET # 3 OF 3 |