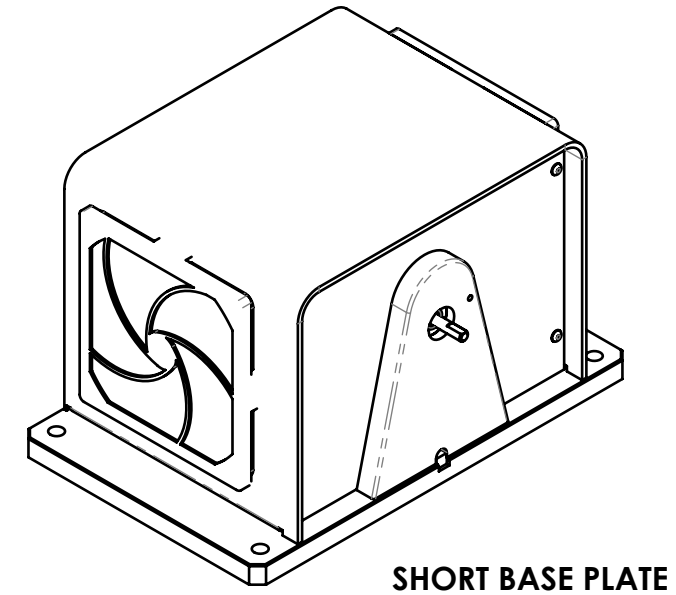
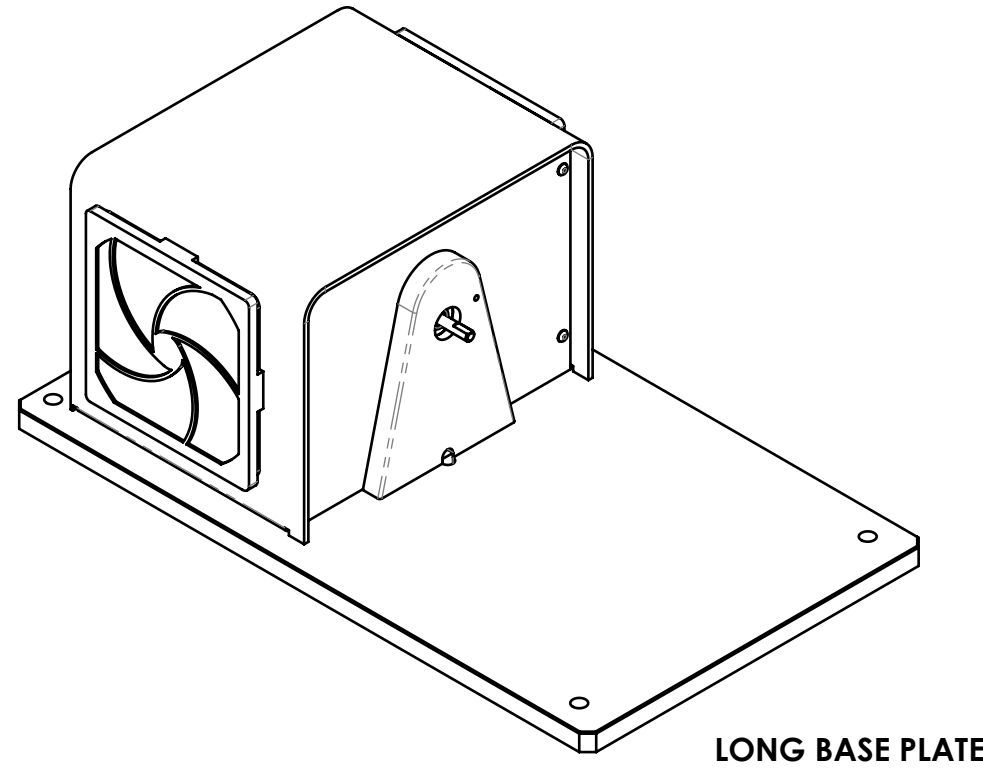

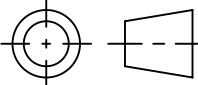
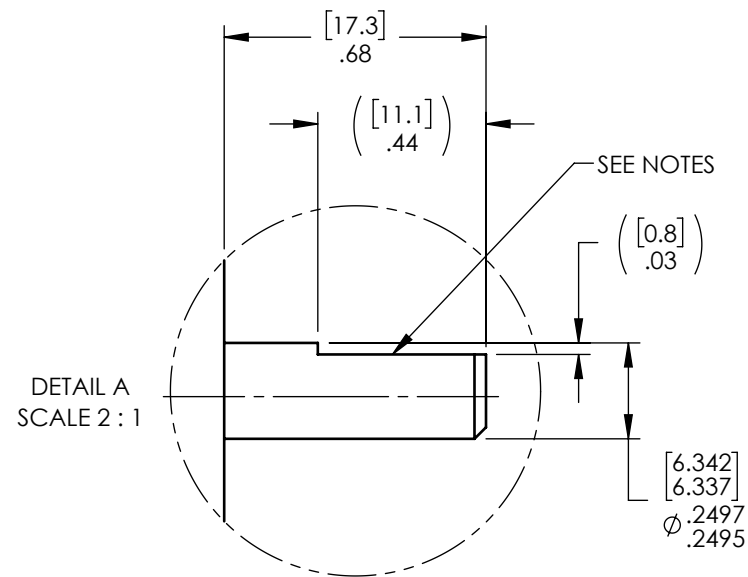


MODEL	MAXIMUM TORQUE RANGE	DRAG TORQUE DE-ENERGIZED AT 1000 RPM	NOMINAL INPUT INERTIA	MAXIMUM POWER		MAXIMUM SPEED	COOLING
				5-MINUTE	CONTINUOUS		
HD-400-XCX-0XXX	0.28 N·m	2.0 mN·m	$15.9 \times 10^{-6} \text{ kg} \cdot \text{m}^2$	200 W	55 W	25,000 rpm	CONVECTION
	40 oz·in	.28 oz·in	$11.7 \times 10^{-6} \text{ lb} \cdot \text{ft} \cdot \text{s}^2$.26 hp	.07 hp		

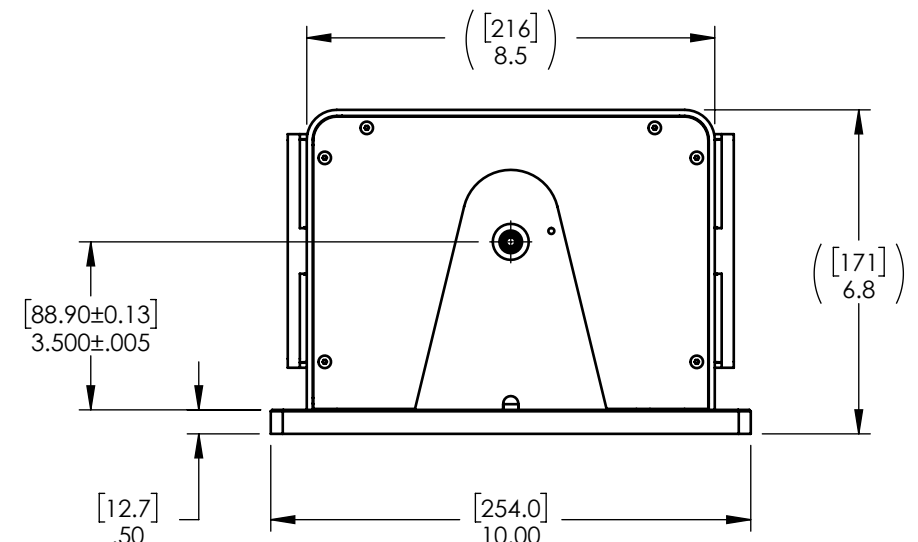
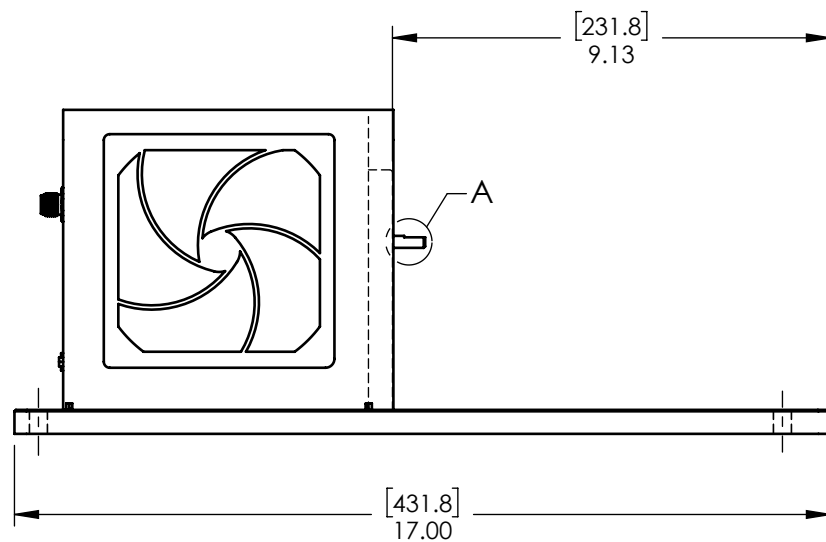
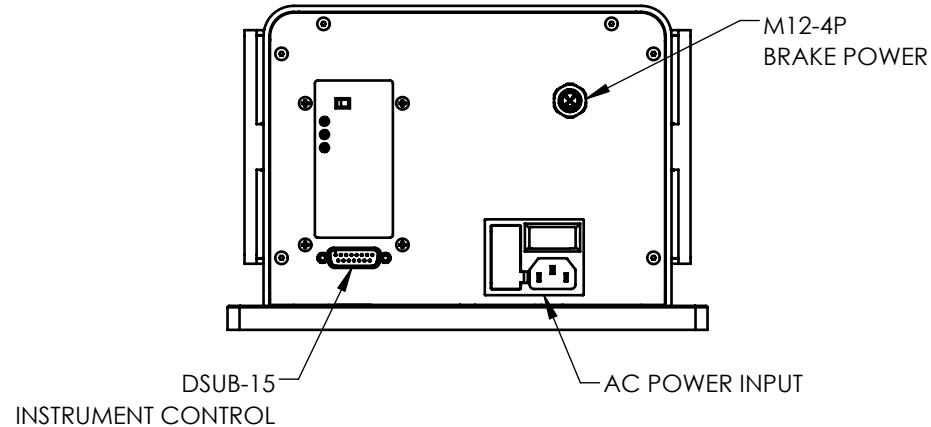
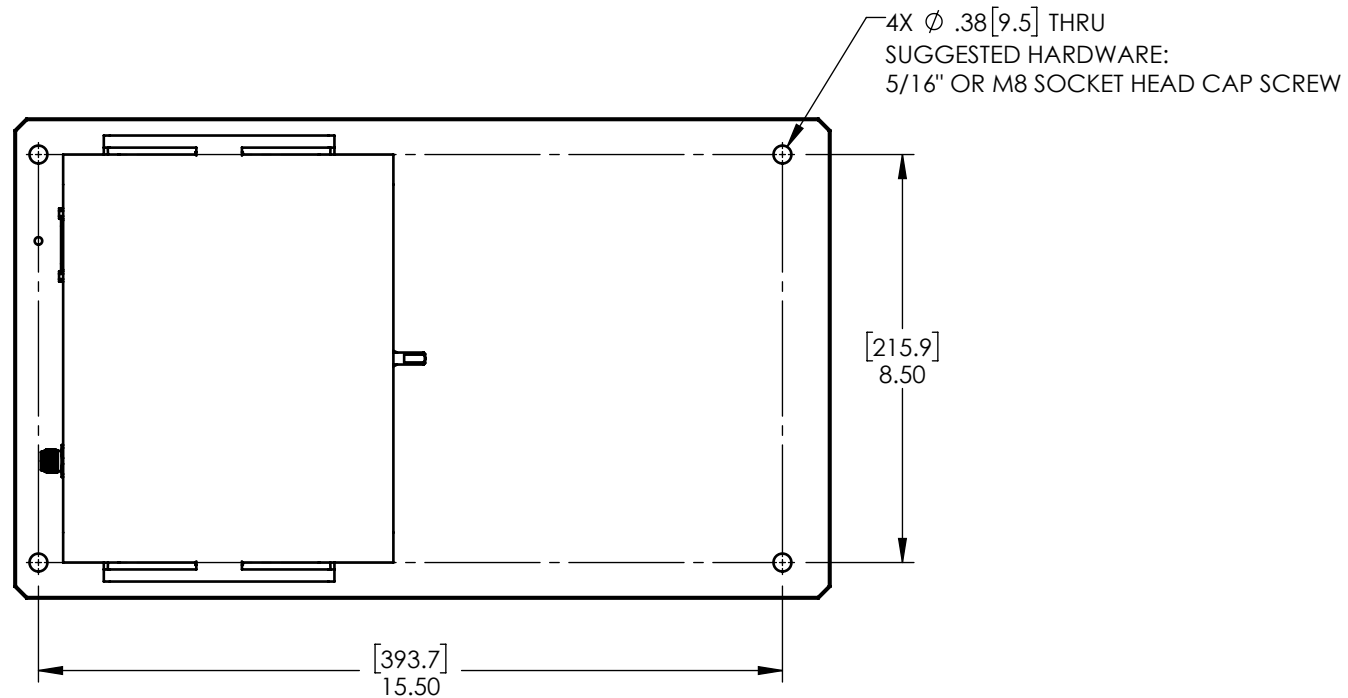


MATERIAL:	-	DESIGN	-	-	 MAGTROL INC. 70 GARDENVILLE PKWY, W. BUFFALO, NEW YORK 14224-1322
FINISH:	-	DRAWN	AMH	08/10/2021	
THIRD ANGLE PROJECTION		CHECKED	JEF	09/10/2021	TITLE:
THIS DRAWING AND SPECIFICATION CONTAINS PROPRIETARY INFORMATION TO MAGTROL INC. ANY DISCLOSURE OR REPRODUCTION OF THIS DOCUMENT WITHOUT WRITTEN AUTHORIZATION FROM MAGTROL INC. IS EXPRESSLY PROHIBITED	UNLESS OTHERWISE SPECIFIED: DIMENSIONS ARE IN INCHES DIAMETERS CONCENTRIC: .003 TIR FACES PERPENDICULAR: .003 INTERPRETATION PER ASME Y14.5M-1994 REMOVE ALL BURRS AND BREAK SHARP EDGES .005/.010 X 45° INSIDE CORNERS TO BE R .02 MAX TOLERANCES: .XX ± .01 X/Y ± 1/64" .XXX ± .005 X° ± 1° SURFACE FINISH 125 RMS MAX			HD-400 DYNAMOMETER	
	USED ON: - SIMILAR TO: -			DWG NO: HD-400-XCX-0XXXi REV A	
	SIZE	SCALE	SHEET #		
B	1:4	1 OF 3			


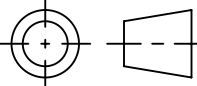


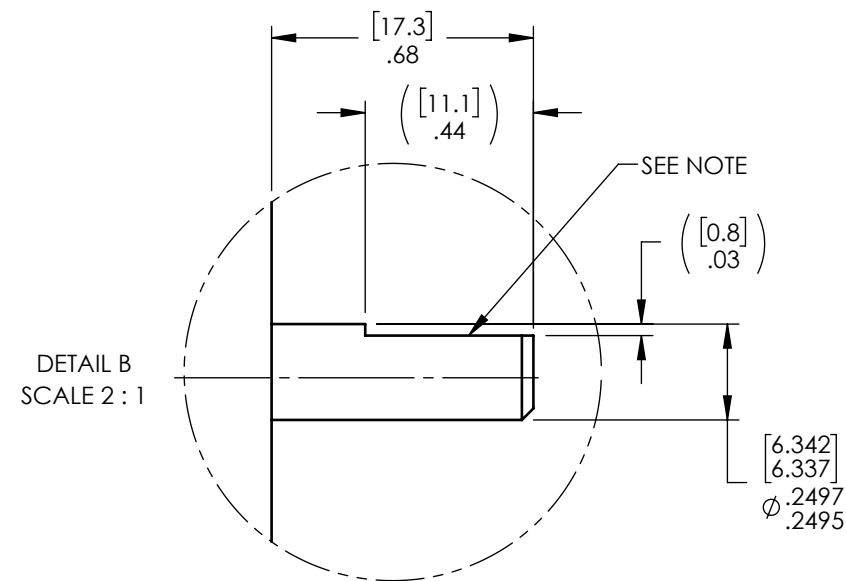
NOTES:

- ENCLOSURE HIDDEN FOR CLARITY.
- SHAFT FLAT IS PRESENT ON STANDARD SPEED DYNAMOMETER ONLY; HIGH SPEED VERSION IS A SMOOTH ROUND SHAFT.



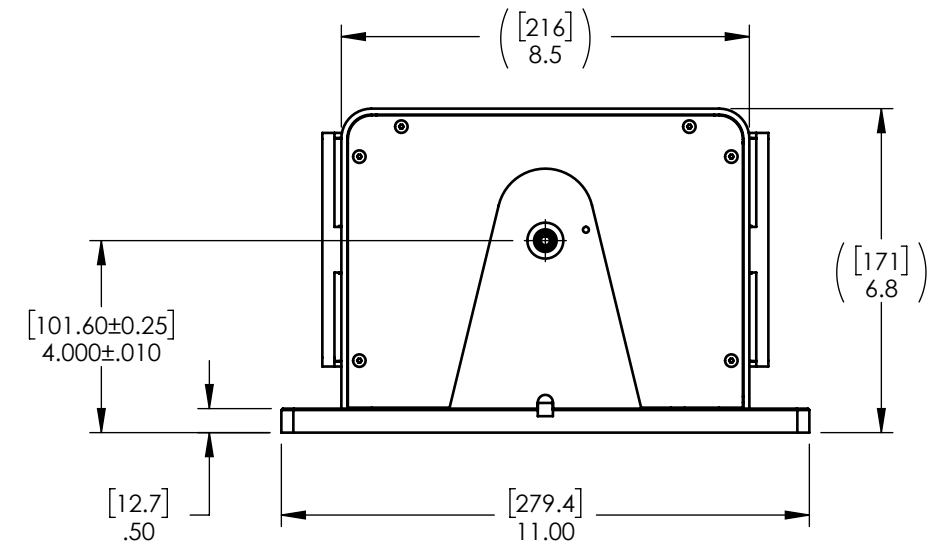
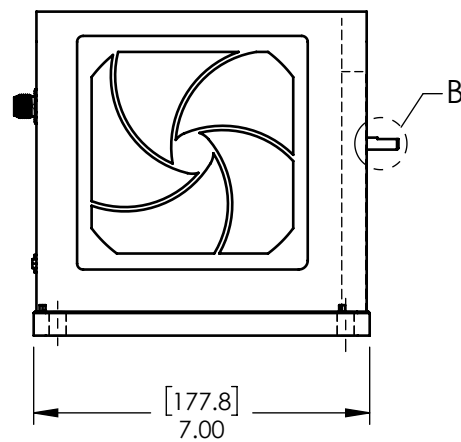
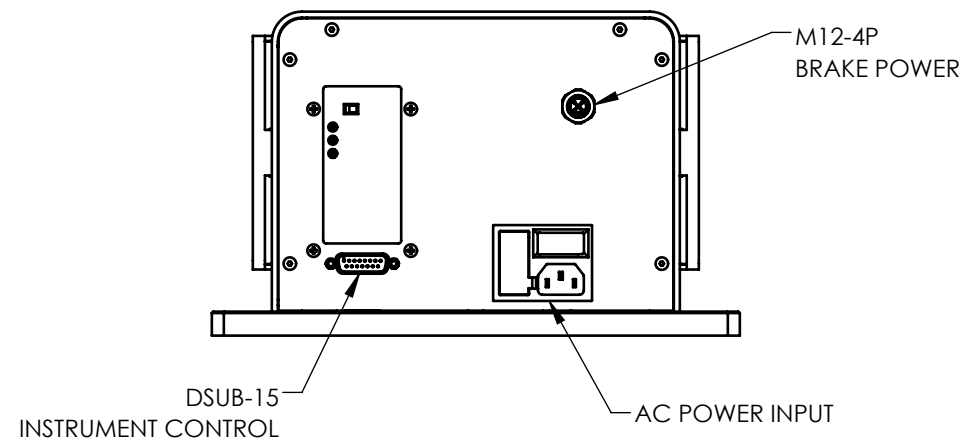
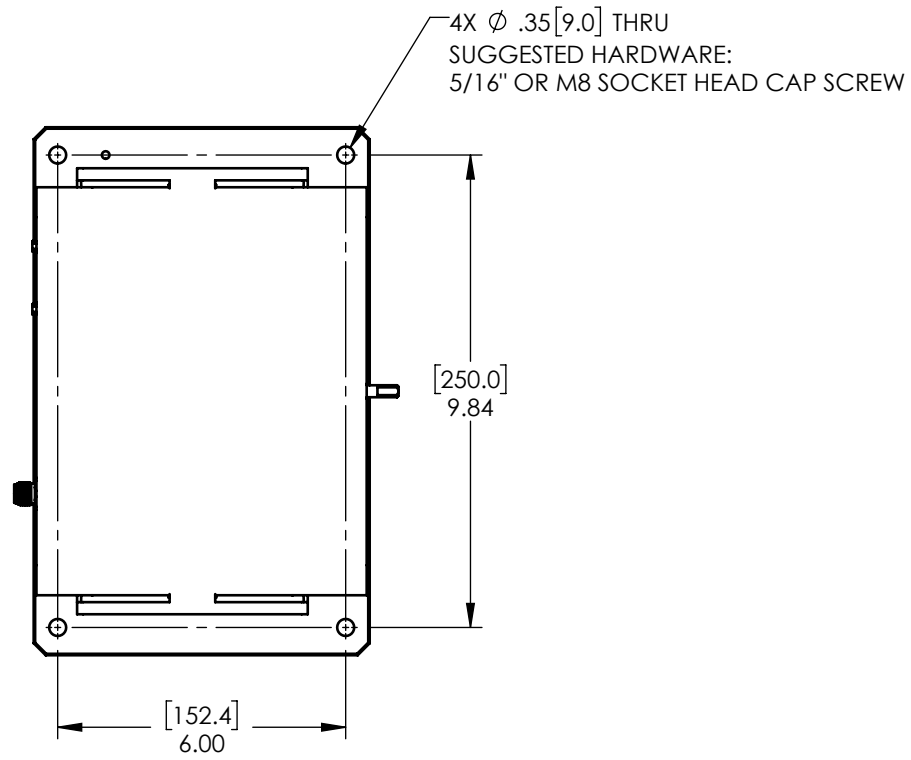
NOTE: DIMENSIONS IN [] ARE mm.

MATERIAL:	-	DESIGN	-	-	 MAGTROL INC. 70 GARDENVILLE PKWY, W. BUFFALO, NEW YORK 14224-1322
FINISH:	-	DRAWN	AMH	08/10/2021	
THIRD ANGLE PROJECTION		CHECKED	JEF	09/10/2021	TITLE:
THIS DRAWING AND SPECIFICATION CONTAINS PROPRIETARY INFORMATION TO MAGTROL INC. ANY DISCLOSURE OR REPRODUCTION OF THIS DOCUMENT WITHOUT WRITTEN AUTHORIZATION FROM MAGTROL INC. IS EXPRESSLY PROHIBITED	UNLESS OTHERWISE SPECIFIED: DIMENSIONS ARE IN INCHES DIAMETERS CONCENTRIC: .003 TIR FACES PERPENDICULAR: .003 INTERPRETATION PER ASME Y14.5M-1994 REMOVE ALL BURRS AND BREAK SHARP EDGES .005/.010 X 45° INSIDE CORNERS TO BE R .02 MAX TOLERANCES: .XX ± .01 X/Y ± 1/64" .XXX ± .005 X° ± 1° SURFACE FINISH 125 RMS MAX			HD-400 DYNAMOMETER	
	DWG NO: HD-400-XCX-0XXXi				REV: A
SIZE	B	SCALE	1:4	SHEET #	2 OF 3


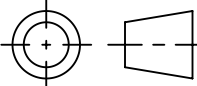


NOTES:

- ENCLOSURE HIDDEN FOR CLARITY.
- SHAFT FLAT IS PRESENT ON STANDARD SPEED DYNAMOMETER ONLY; HIGH SPEED VERSION IS A SMOOTH ROUND SHAFT.



NOTE: DIMENSIONS IN [] ARE mm.

MATERIAL: -	DESIGN	-	-	 MAGTROL INC. 70 GARDENVILLE PKWY, W. BUFFALO, NEW YORK 14224-1322	TITLE: HD-400 DYNAMOMETER
	DRAWN	AMH	08/10/2021		
FINISH: -	CHECKED	JEF	09/10/2021	USED ON: -	REV A
	THIRD ANGLE PROJECTION 			SIMILAR TO: -	
THIS DRAWING AND SPECIFICATION CONTAINS PROPRIETARY INFORMATION TO MAGTROL INC. ANY DISCLOSURE OR REPRODUCTION OF THIS DOCUMENT WITHOUT WRITTEN AUTHORIZATION FROM MAGTROL INC. IS EXPRESSLY PROHIBITED				UNLESS OTHERWISE SPECIFIED: DIMENSIONS ARE IN INCHES DIAMETERS CONCENTRIC: .003 TIR FACES PERPENDICULAR: .003 INTERPRETATION PER ASME Y14.5M-1994 REMOVE ALL BURRS AND BREAK SHARP EDGES .005/.010 X 45° INSIDE CORNERS TO BE R .02 MAX TOLERANCES: .XX ± .01 X/Y ± 1/64" .XXX ± .005 X° ± 1° SURFACE FINISH 125 RMS MAX	
DWG NO: HD-400-XCX-0XXXi				SCALE: 1:4	SHEET #: 3 OF 3