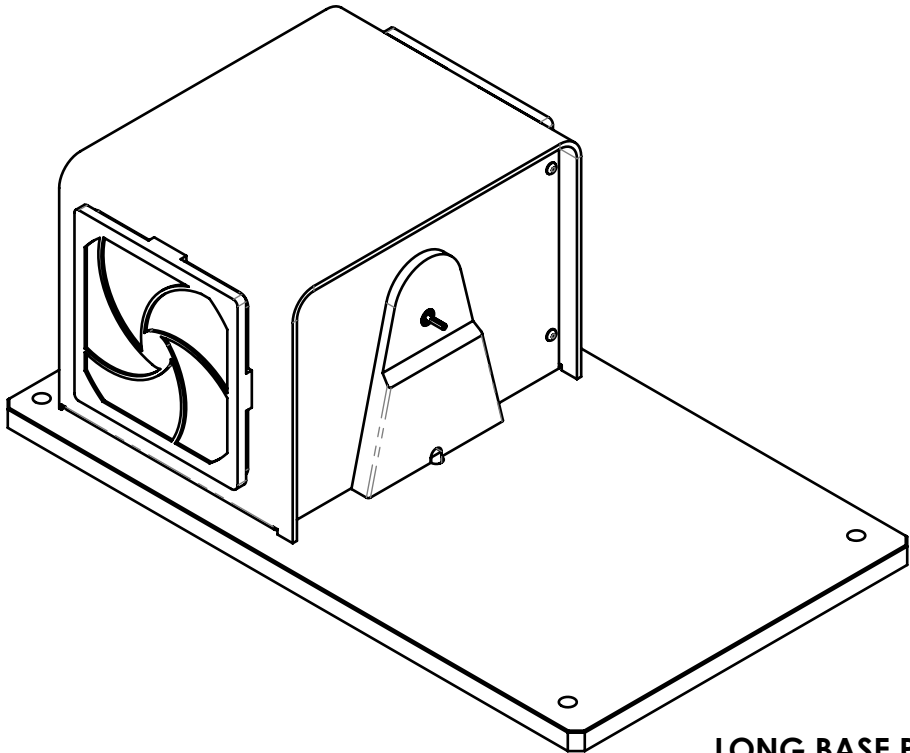
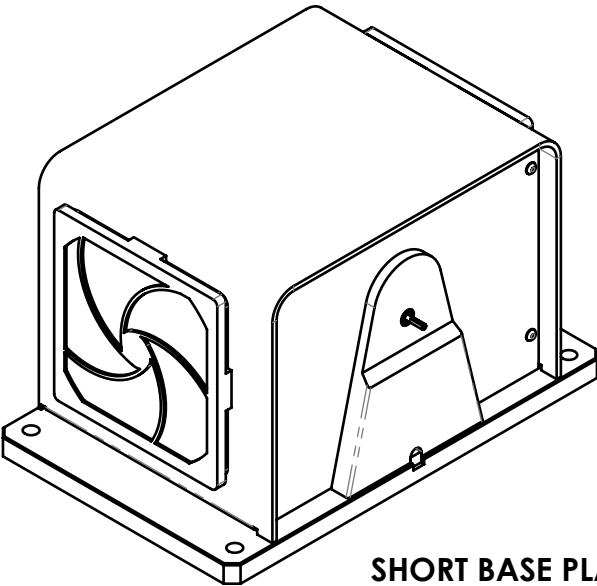



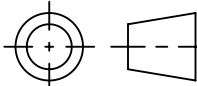
MODEL	MAXIMUM TORQUE RANGE	DRAG TORQUE DE-ENERGIZED AT 1000 RPM	NOMINAL INPUT INERTIA	MAXIMUM POWER		MAXIMUM SPEED	COOLING
				5-MINUTE	CONTINUOUS		
HD-106-XCX-0XXX	0.018 N·m	0.056 mN·m	$470 \times 10^{-9} \text{ kg} \cdot \text{m}^2$	35 W	7 W	30,000 rpm	CONVECTION
	2.5 oz·in	.008 oz·in	$347 \times 10^{-9} \text{ lb} \cdot \text{ft} \cdot \text{s}^2$.046 hp	.009 hp		

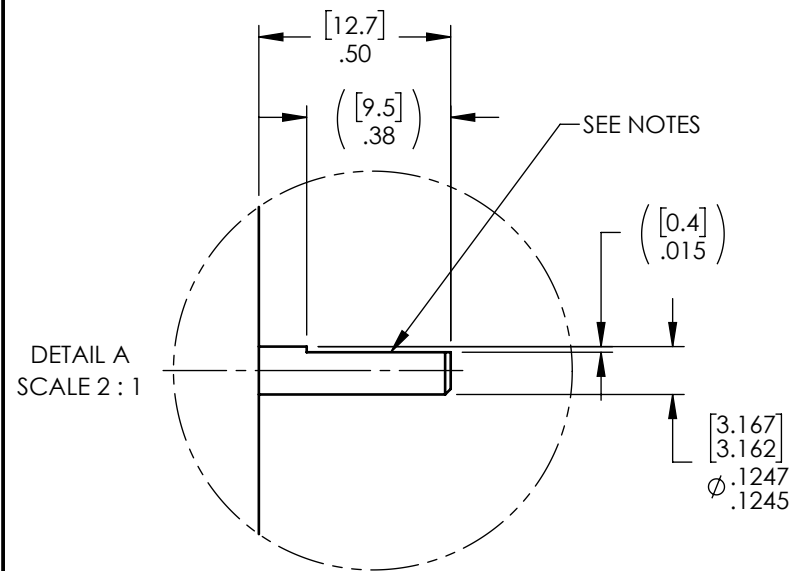


LONG BASE PLATE

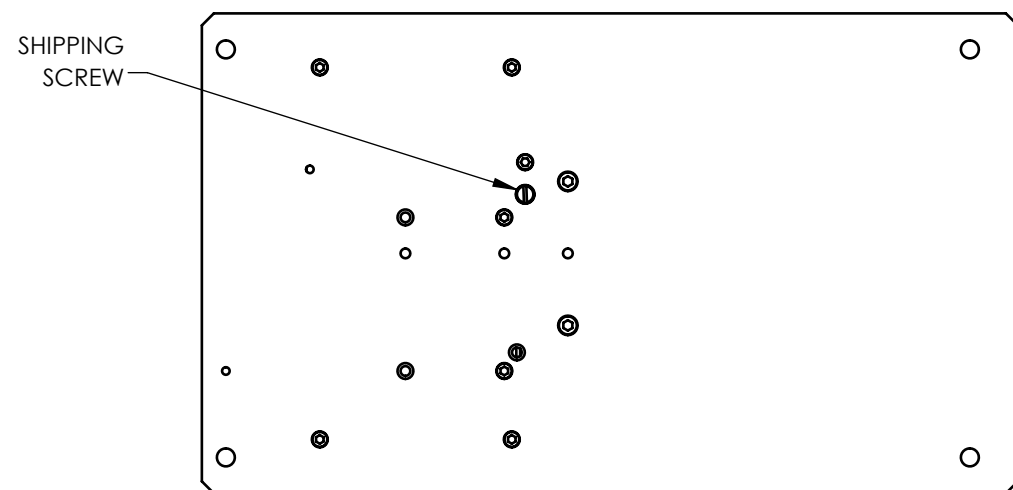
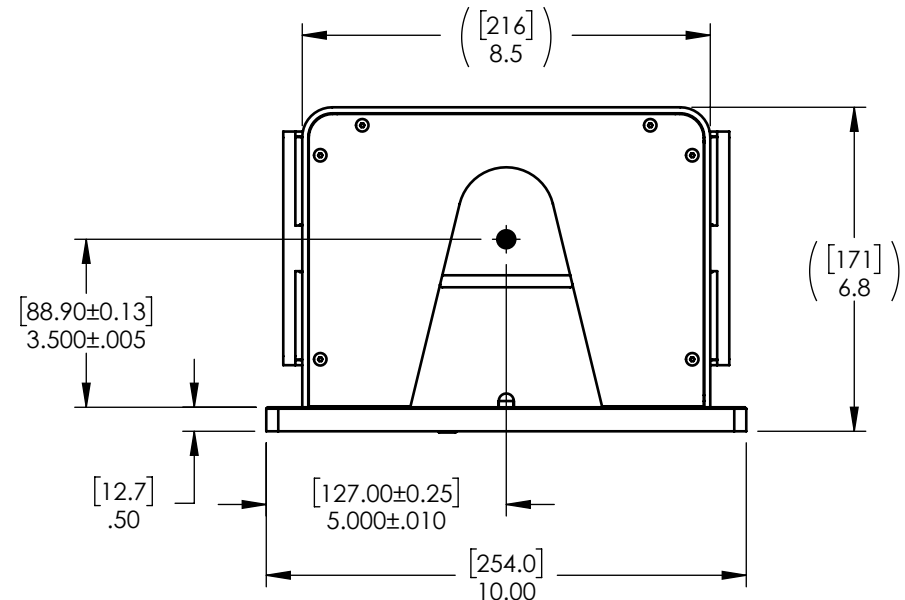
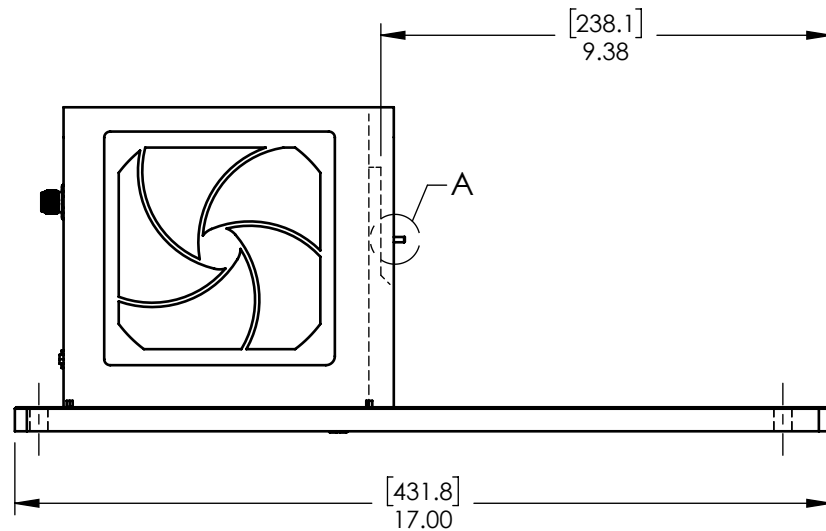
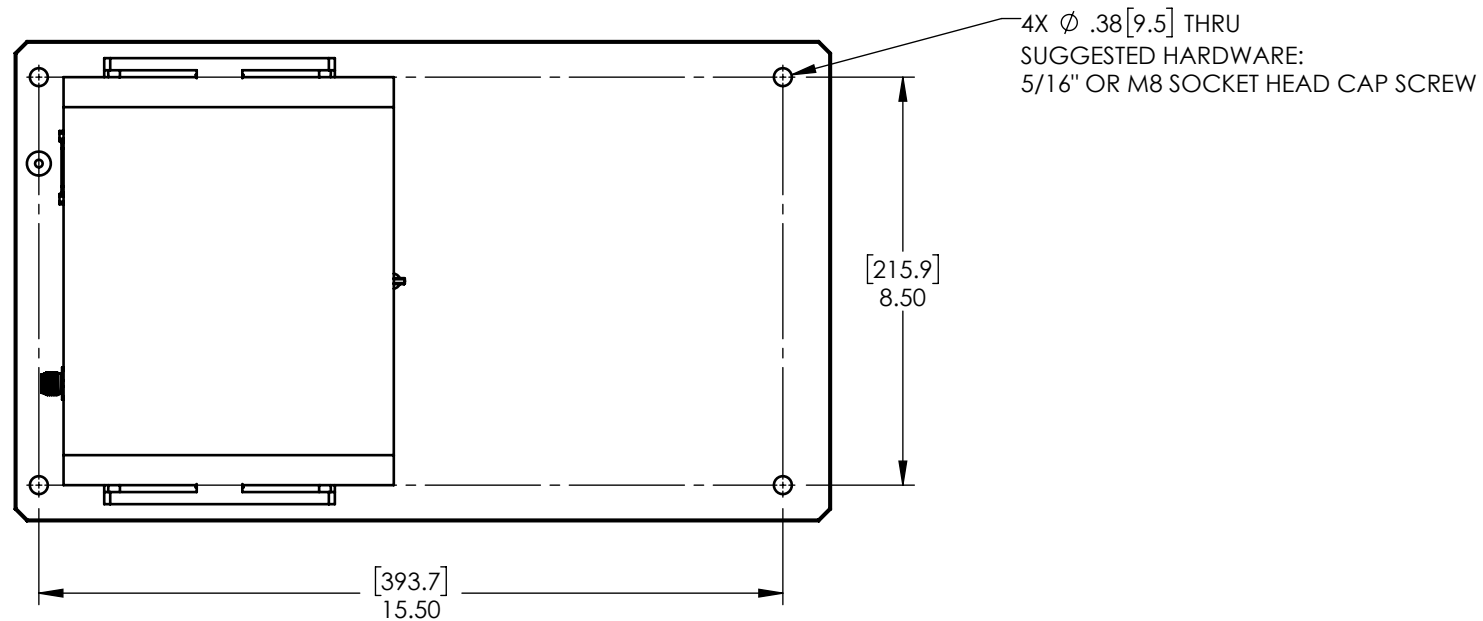
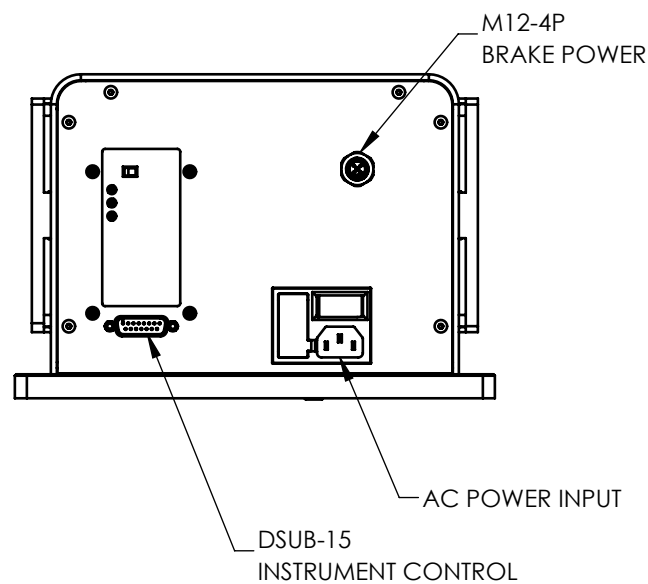


SHORT BASE PLATE


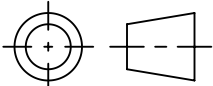
MATERIAL: -	DESIGN	-	-	 MAGTROL INC. 70 GARDENVILLE PKWY, W. BUFFALO, NEW YORK 14224-1322
	DRAWN	AMH	8/2/2021	
FINISH: -	CHECKED	JEF	8/6/2021	TITLE: HD-106 DYNAMOMETER
	UNLESS OTHERWISE SPECIFIED: DIMENSIONS ARE IN INCHES DIAMETERS CONCENTRIC: .003 TIR FACES PERPENDICULAR: .003 INTERPRETATION PER ASME Y14.5M-1994 REMOVE ALL BURRS AND BREAK SHARP EDGES .005/.010 X 45° INSIDE CORNERS TO BE R .02 MAX TOLERANCES: .XX ± .01 X/Y ± 1/64" .XXX ± .005 X° ± 1° SURFACE FINISH 125 RMS MAX			
THIRD ANGLE PROJECTION				USED ON: - SIMILAR TO: -
THIS DRAWING AND SPECIFICATION CONTAINS PROPRIETARY INFORMATION TO MAGTROL INC. ANY DISCLOSURE OR REPRODUCTION OF THIS DOCUMENT WITHOUT WRITTEN AUTHORIZATION FROM MAGTROL INC. IS EXPRESSLY PROHIBITED	DWG NO: HD-106-XCX-0XXXi			REV C
	SIZE B	SCALE 1:4	SHEET # 1 OF 3	

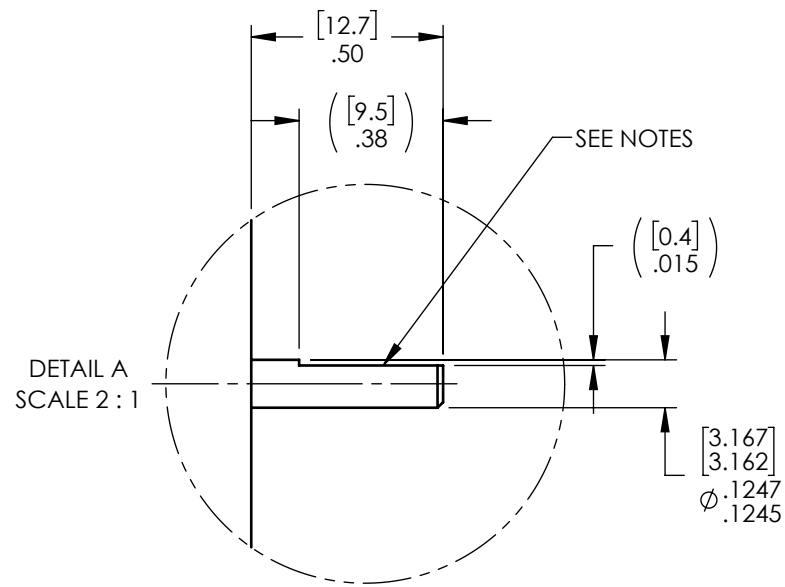


- NOTES:
- ENCLOSURE HIDDEN FOR CLARITY.
 - SHAFT FLAT IS PRESENT ON STANDARD SPEED DYNAMOMETER ONLY; HIGH SPEED VERSION IS A SMOOTH ROUND SHAFT.

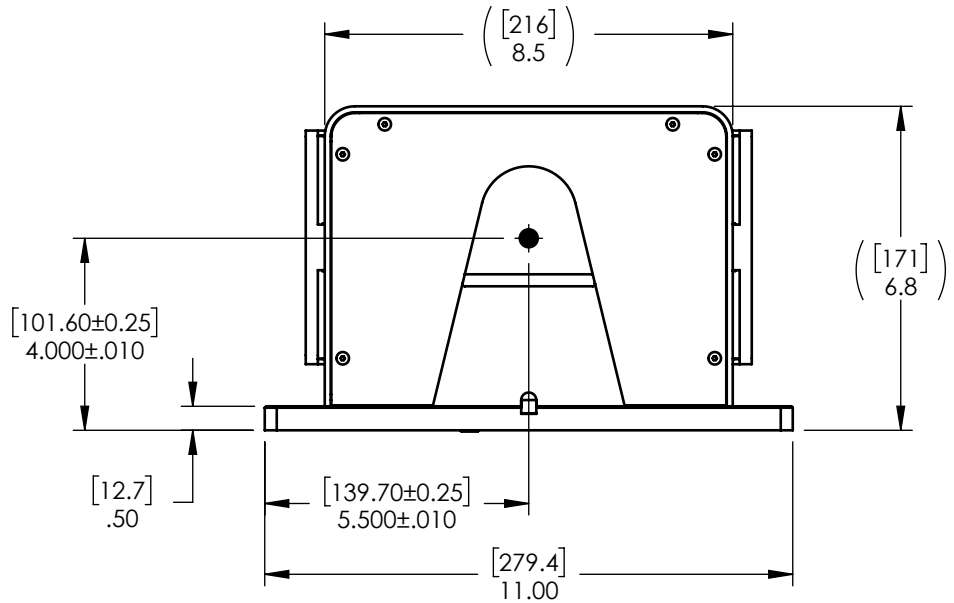
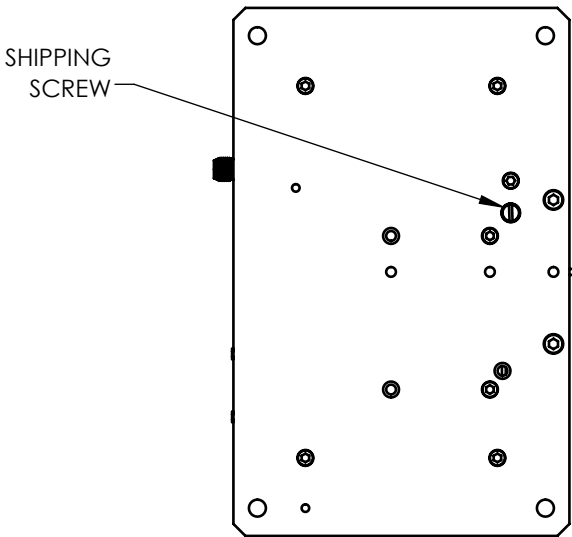
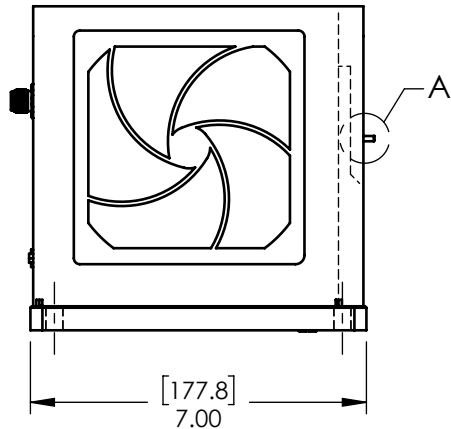
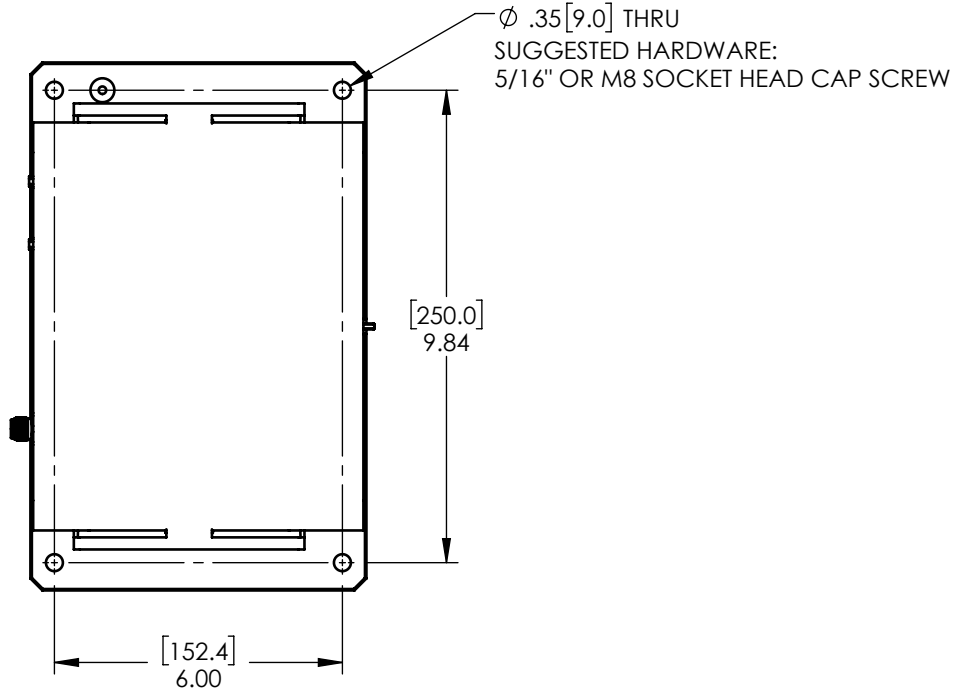
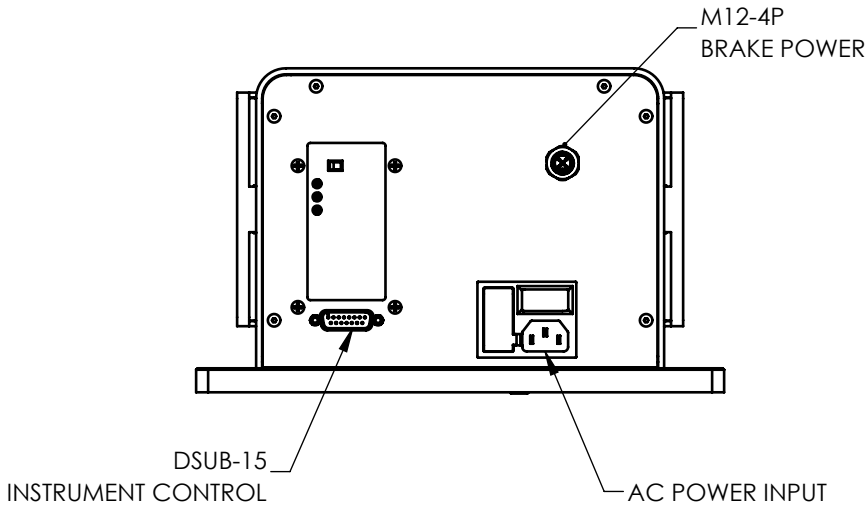


NOTE: DIMENSIONS IN [] ARE mm.


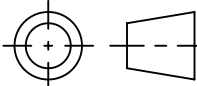
MATERIAL:		DESIGN		-	-	 <div>MAGTROL INC. 70 GARDENVILLE PKWY, W. BUFFALO, NEW YORK 14224-1322</div>
-		DRAWN		AMH	8/2/2021	
FINISH:		CHECKED		JEF	8/6/2021	
-						TITLE: HD-106 DYNAMOMETER
THIRD ANGLE PROJECTION				UNLESS OTHERWISE SPECIFIED: DIMENSIONS ARE IN INCHES DIAMETERS CONCENTRIC: .003 TIR FACES PERPENDICULAR: .003 INTERPRETATION PER ASME Y14.5M-1994 REMOVE ALL BURRS AND BREAK SHARP EDGES .005/.010 X 45° INSIDE CORNERS TO BE R .02 MAX TOLERANCES: .XX ± .01 X/Y ± 1/64" .XXX ± .005 X° ± 1° SURFACE FINISH 125 RMS MAX		
THIS DRAWING AND SPECIFICATION CONTAINS PROPRIETARY INFORMATION TO MAGTROL INC. ANY DISCLOSURE OR REPRODUCTION OF THIS DOCUMENT WITHOUT WRITTEN AUTHORIZATION FROM MAGTROL INC. IS EXPRESSLY PROHIBITED						
				USED ON: - SIMILAR TO: -		REV C
				DWG NO: HD-106-XCX-0XXXi		
		SIZE B		SCALE 1:4		SHEET # 2 OF 3



- NOTES:
- ENCLOSURE HIDDEN FOR CLARITY.
 - SHAFT FLAT IS PRESENT ON STANDARD SPEED DYNAMOMETER ONLY; HIGH SPEED VERSION IS A SMOOTH ROUND SHAFT.



NOTE: DIMENSIONS IN [] ARE mm.

MATERIAL: -	DESIGN	-	-	 MAGTROL INC. 70 GARDENVILLE PKWY, W. BUFFALO, NEW YORK 14224-1322	TITLE: HD-106 DYNAMOMETER	
	DRAWN	AMH	8/2/2021			
FINISH: -	CHECKED	JEF	8/6/2021	UNLESS OTHERWISE SPECIFIED: DIMENSIONS ARE IN INCHES DIAMETERS CONCENTRIC: .003 TIR FACES PERPENDICULAR: .003 INTERPRETATION PER ASME Y14.5M-1994 REMOVE ALL BURRS AND BREAK SHARP EDGES .005/.010 X 45° INSIDE CORNERS TO BE R .02 MAX TOLERANCES: .XX ± .01 X/Y ± 1/64" .XXX ± .005 X° ± 1° SURFACE FINISH 125 RMS MAX	USED ON: - SIMILAR TO: -	
THIRD ANGLE PROJECTION					DWG NO: HD-106-XCX-0XXXi	
THIS DRAWING AND SPECIFICATION CONTAINS PROPRIETARY INFORMATION TO MAGTROL INC. ANY DISCLOSURE OR REPRODUCTION OF THIS DOCUMENT WITHOUT WRITTEN AUTHORIZATION FROM MAGTROL INC. IS EXPRESSLY PROHIBITED				SIZE B	SCALE 1:4	REV C SHEET # 3 OF 3