

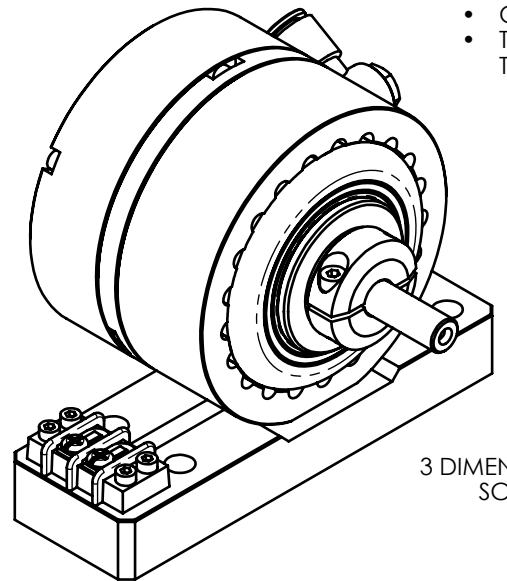
MODEL	STOCK CODE	MINIMUM TORQUE AT RATED CURRENT (Nm)	RATED CURRENT (mA)	RESISTANCE ±10% @ 25°C (ohms)	VOLTAGE (Vdc)	NOMINAL POWER (watts)	MAXIMUM SPEED (RPM)	KINETIC POWER RATINGS			DE-ENERGIZED DRAG TORQUE @ 1000 RPM (Nm)	EXTERNAL INERTIA (kg cm ²)	TORQUE TO INERTIA RATIO (rad/s ²)
								AIR SUPPLY* (kPa)	5 MINUTE (watts)	CONTINUOUS (watts)			
AHB-0.75	006591	0.65	400	60	24	9.6	35,000	620±35	1200	1200	-	9.13 x 10 ⁻¹	10,952
								NO AIR	250	55			

SOLID MODEL AVAILABLE

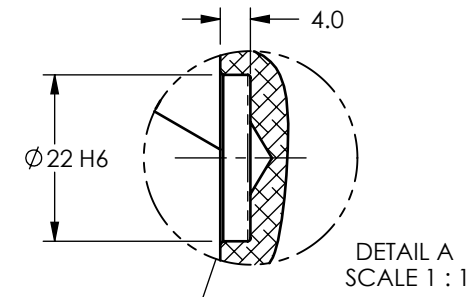
NOTES:

*** AIR SUPPLY:**

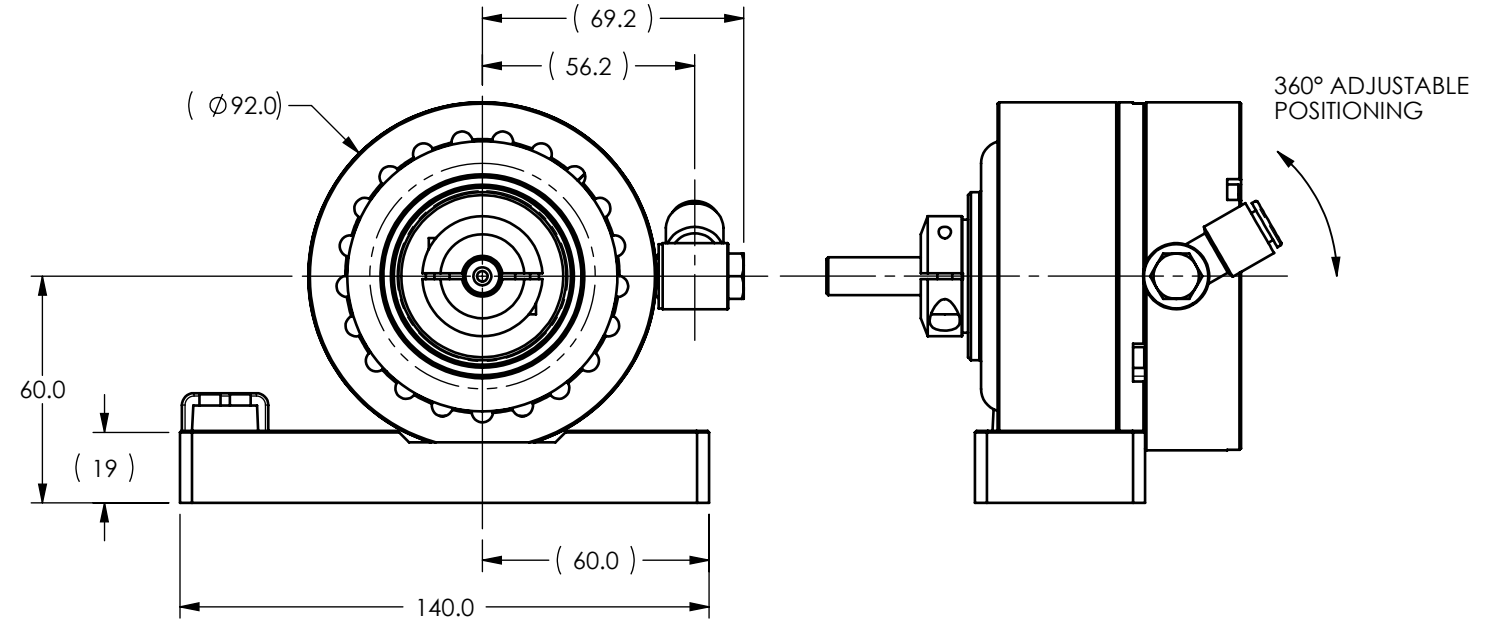
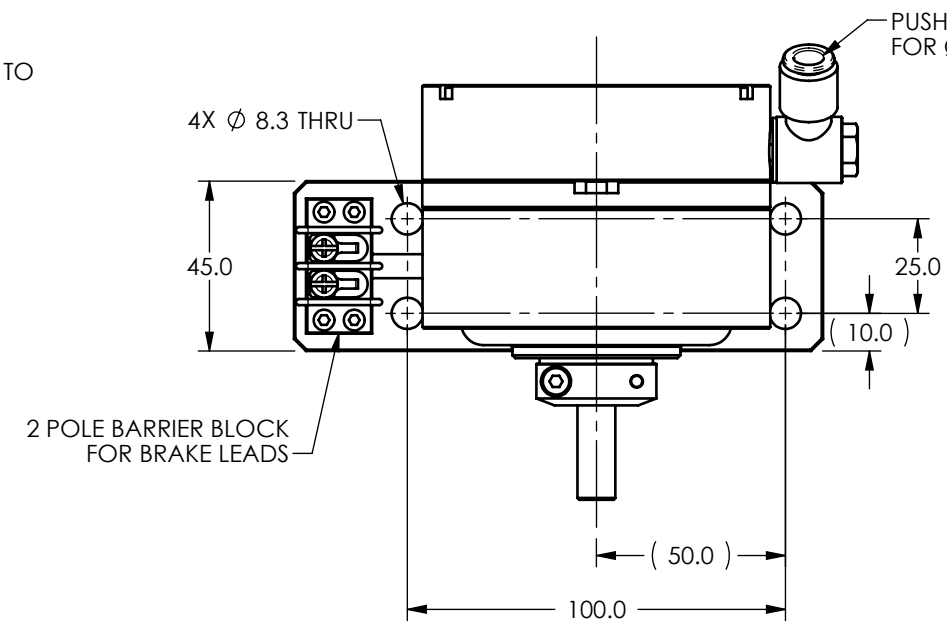
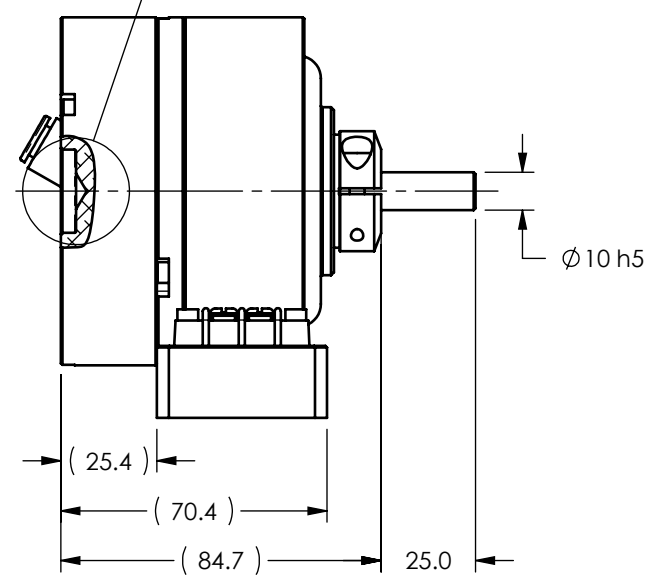
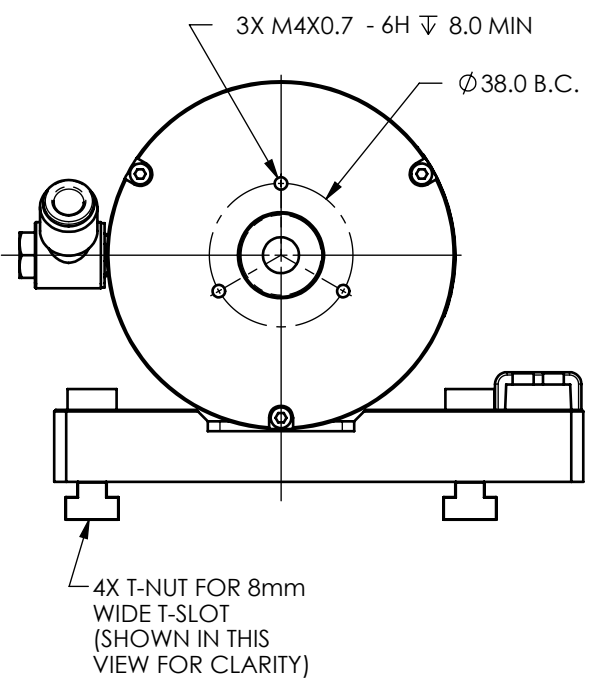
- CUSTOMER IS TO SUPPLY CLEAN, DRY AIR TO THE BRAKE.
- TO ACHIEVE MAXIMUM KINETIC POWER RATINGS, 20 SCFM MUST BE SUPPLIED TO THE BRAKE DURING OPERATION.



3 DIMENSIONAL VIEW
SCALE 1 : 2



DETAIL A
SCALE 1 : 1



TYPICAL SOUND PRESSURE AT 1 METER: 110db

WARNING: HIGH SOUND LEVELS CAN CAUSE PERMANENT HEARING LOSS. USE HEARING PROTECTION WHILE THIS PRODUCT IS IN USE.

MATERIAL: -	DESIGN	AJC	04/09/10		MAGTROL INC. 70 GARDENVILLE PKWY, W. BUFFALO, NEW YORK 14224-1322
	DRAWN	AJC	04/09/10		
FINISH: -	CHECKED	DTW	04/10/10	TITLE: AHB-0.75 AIR COOLED BRAKE	
	THIRD ANGLE PROJECTION			UNLESS OTHERWISE SPECIFIED: DIMENSIONS ARE IN MILLIMETERS, DIAMETERS CONCENTRIC: 0.08 TIR, FACES PERPENDICULAR: 0.08 INTERPRETATION PER ASME Y14.5M-1994 REMOVE ALL BURRS AND BREAK SHARP EDGES 0.13/0.25 X 45°, ALL INSIDE CORNERS TO BE R 0.5 MAX. TOLERANCES: X ±0.4 X.XX ±0.13 X.X ±0.25 ANG. ±1° SURFACE FINISH 3.2 µm MAX. U.O.S.	
THIS DRAWING AND SPECIFICATION CONTAINS PROPRIETARY INFORMATION TO MAGTROL INC. ANY DISCLOSURE OR REPRODUCTION OF THIS DOCUMENT WITHOUT WRITTEN AUTHORIZATION FROM MAGTROL INC. IS EXPRESSLY PROHIBITED				USED ON: -	REV
				DRAWING NUMBER: AHB-0.75	-
SIZE B	SCALE 1:2	SHEET # 4 OF 4			