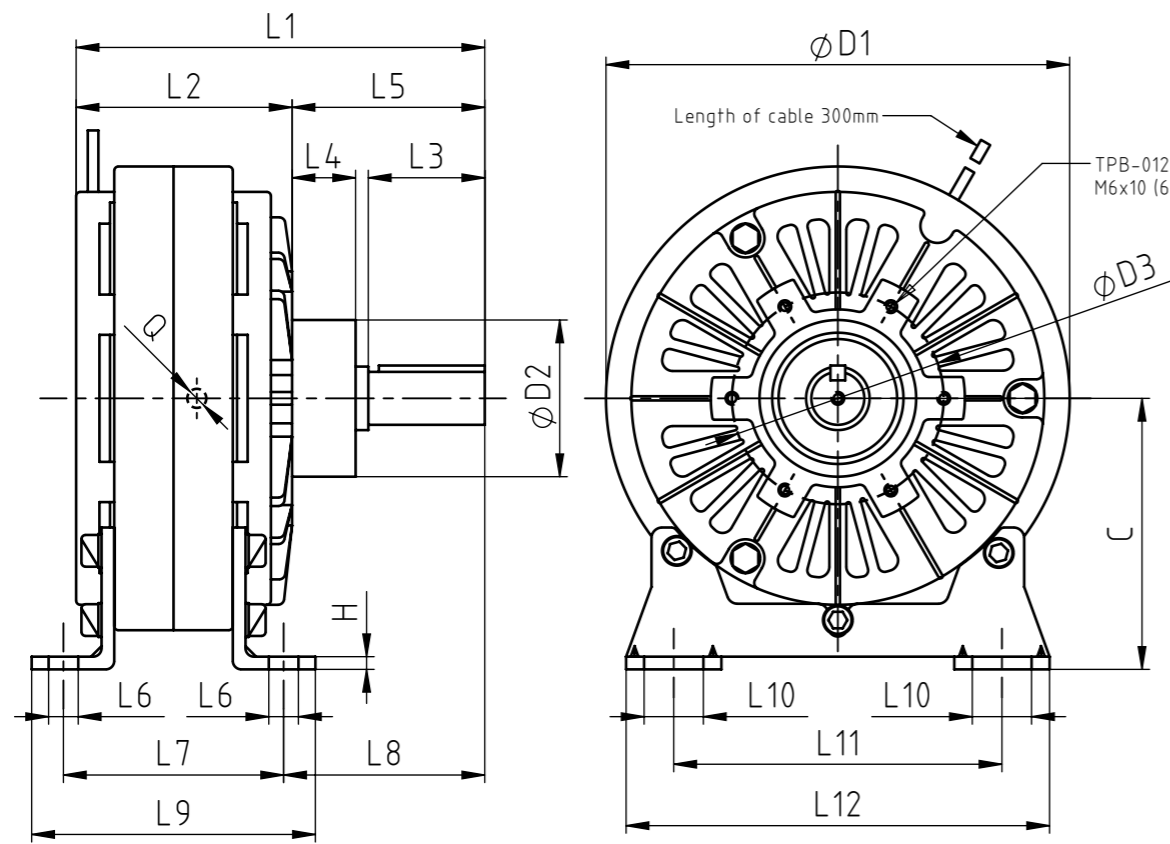
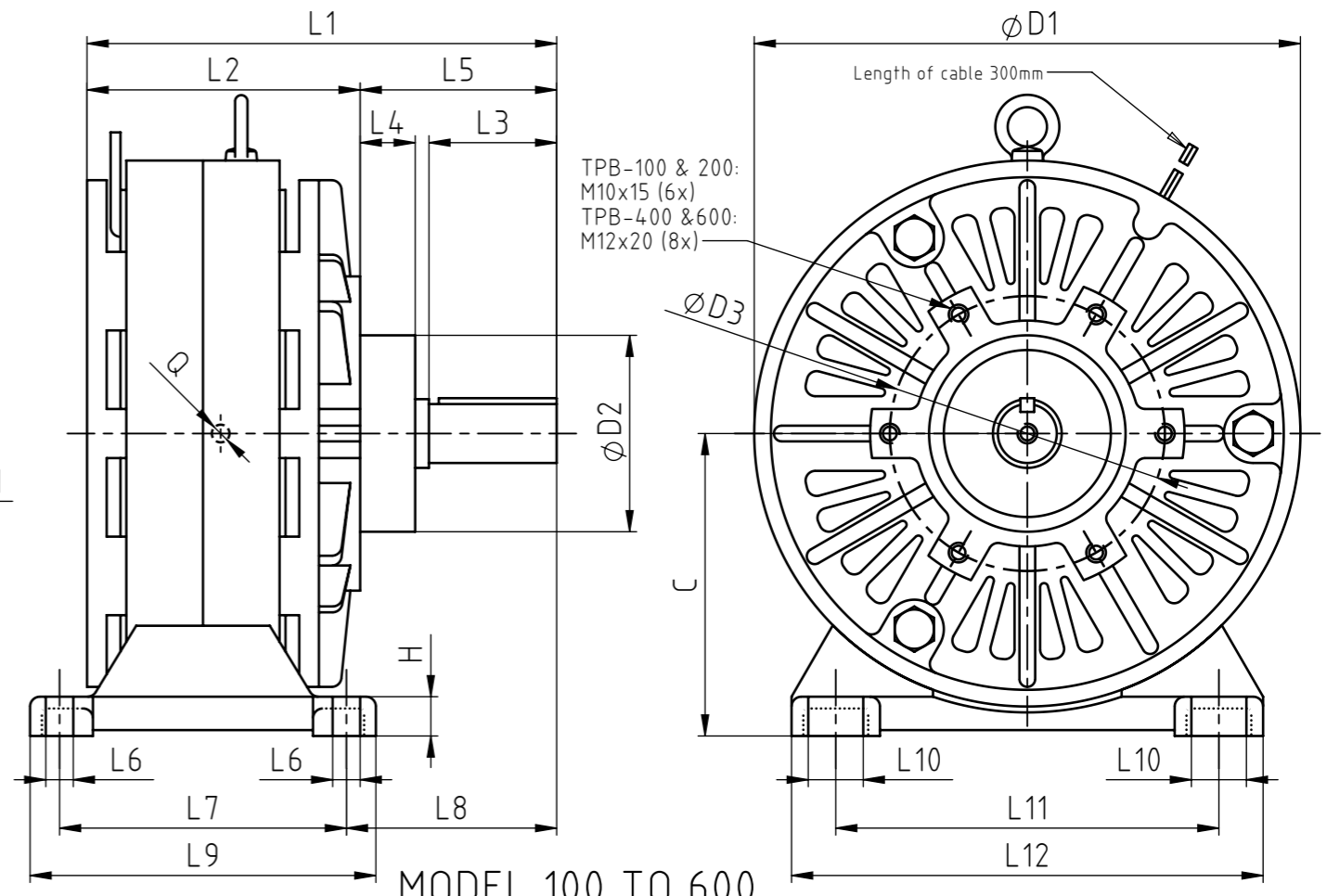


THE INFORMATION DISCLOSED HEREIN WAS ORIGINATED BY AND IS THE PROPERTY OF MAGTROL SA. MAGTROL SA RESERVES ALL PATENT PROPRIETARY, DESIGN, USE, SALE, MANUFACTURING AND REPRODUCTION RIGHTS THERETO.



MODEL 012 TO 050



MODEL 100 TO 600

Type	L1	L2	L3	L4	L5	L6	L7	L8	L9	L10	L11	L12	D1	D2	D3	H	C	Q (inch)	R	Axis body		
																				d(h7)	W (p7)	T(0/-0.2)
TPB 012	132	83	29	15	49	11.5	76	58	101	20	105	140	152	42	64	3.5	92	1/8	M4x8	15	5	17
TPB 025	155	91	43	17	64	11	84	73	109	22	135	175	184	55	78	4.5	111	1/8	M5x10	20	5	22
TPB 050	193	102	55	30	91	14	104	95	134	28	155	200	219	74	100	6	128	1/4	M6x12	25	7	28
TPB 100	239	139	65	28	100	14	146	107	176	28	195	240	278	100	140	20	154	3/8	M10x20	30	7	33
TPB 200	278	169	69	30	109	14	170	119	200	28	225	270	327	110	150	20	181	3/8	M10x20	35	10	38.5
TPB 400	339	200	92	35	139	17	227	136.5	267	34	250	300	398	130	200	23	222	3/8	M10x20	45	12	48.5
TPB 600	339	200	92	35	139	17	227	136.5	267	34	250	300	398	130	200	23	222	3/8	M10x20	45	12	48.5

Type	Fix torque (Nm)	Capability (75°C)		Inertial torque (kg m <sup>2</sup> )	Weight (kg)	Max. speed of rotation (tr/min)
		Electric (A)	Electric Power (W)			
TPB 012	12	0.94	22.5	1.34x10 <sup>-3</sup>	5.3	1'800
TPB 025	25	1.24	30	3.80x10 <sup>-3</sup>	8.6	1'800
TPB 050	50	2.15	51.5	9.50x10 <sup>-3</sup>	15.5	1'800
TPB 100	100	2.40	57.6	3.50x10 <sup>-2</sup>	37.6	1'800
TPB 200	200	2.70	64.8	9.15x10 <sup>-2</sup>	57.9	1'800
TPB 400	400	3.50	85.9	2.43x10 <sup>-1</sup>	109.3	1'800
TPB 600	600	4.30	100.8	2.43x10 <sup>-1</sup>	110.5	1'800

6					
5					
4					
3					
2					
1					

Rev.	Date	PM	Drawn	Appr.	Repl. by : Repl. for :
Tolerances: ± mm to 50mm, ± mm over 50mm					
Material:					
Finish:					

Scale 1:1	Drawn	25.02.2019	ajoy
	Checked		
	Approved	25.02.2019	blot

Powder Brake with feet  
TPB xxx

DRAWING N°  
954-25-02-0000V

A

B

C

D