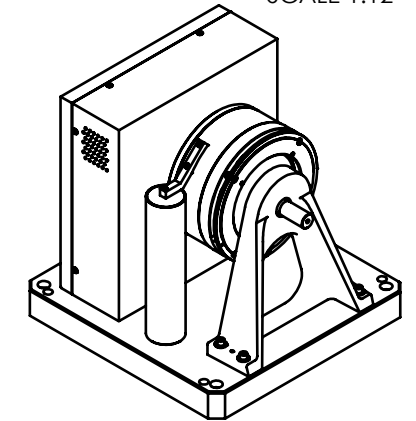


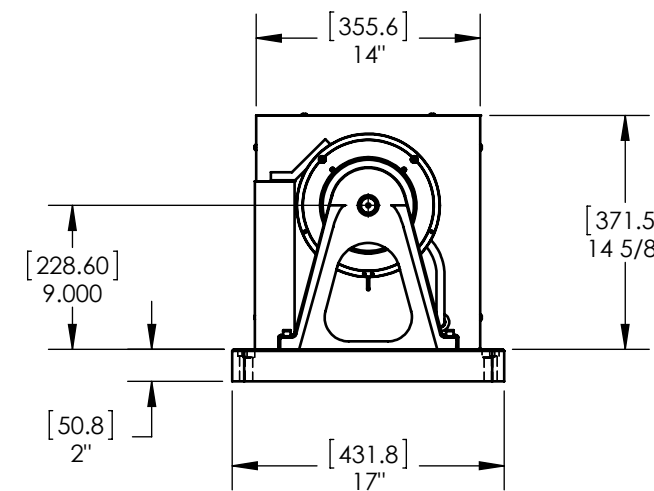
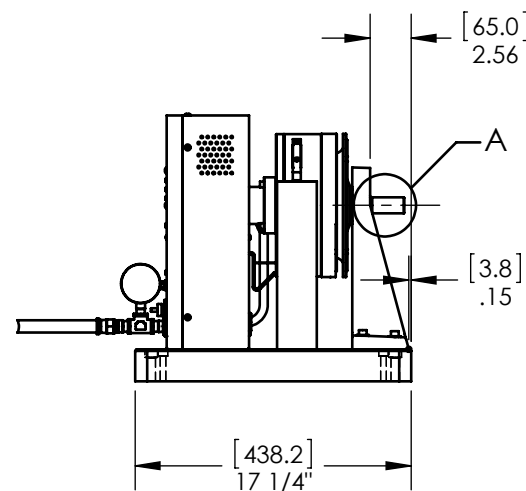
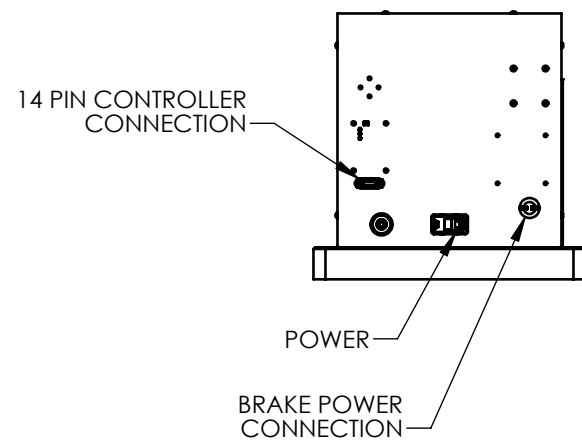
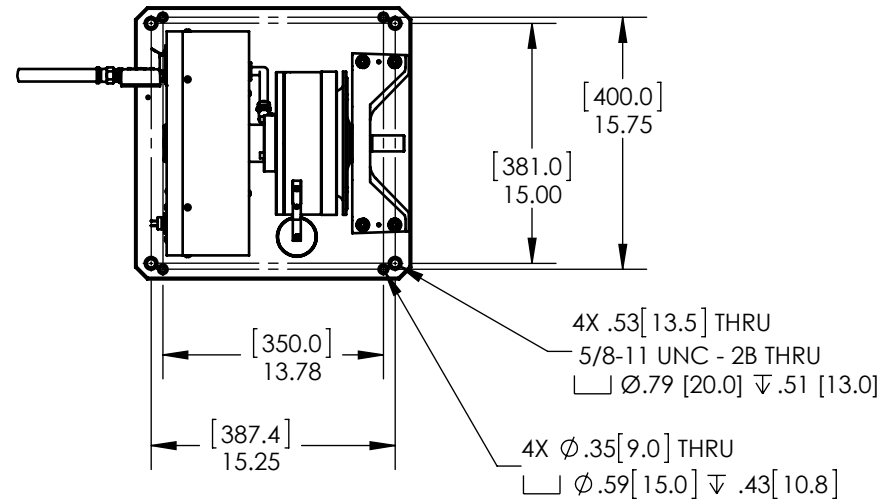
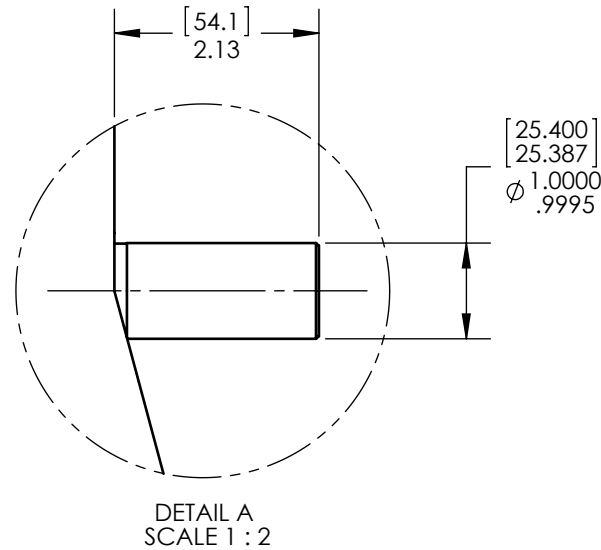
MODEL	TORQUE MEASURE UNIT CODE (-XXX)	STOCK CODE	MAXIMUM TORQUE RANGE	DRAG TORQUE DE-ENERGIZED AT 1000 RPM	NOMINAL INPUT INERTIA		MAXIMUM POWER		MAXIMUM SPEED (RPM)	COOLING
					(lb•ft•s ²)	(kg•m ²)	5-MINUTE (Watts)	CONTINUOUS (Watts)		
HD-800-XXX-0100	5N	006781	14.00 N m	0.10 N m	4.43 x 10 ⁻³	6.01 X 10 ⁻³	2,800	1,800	12,000	COMPRESSED AIR* (13 CFM @ 10 PSI)
	5NA	006782								
	6N	005960	125.0 lb in	0.8 lb in						
	6NA	005962								
	7N	005964	140.0 kg cm	1.0 kg cm						
	7NA	005966								
	8N	005968	14.00 N m	0.10 N m						
	8NA	005970								

SOLID MODEL AVAILABLE


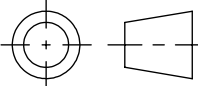
3 DIMENSIONAL VIEW
SCALE 1:12



* REQUIRES AIR COOLING PROVIDED BY CUSTOMER. REGULATOR AND FILTER PACKAGE IS PROVIDED AS STANDARD EQUIPMENT



INSTALLATION DRAWING

MATERIAL: -	DESIGN	-	-		MAGTROL INC.	
	DRAWN	JEF	08/31/11		70 GARDENVILLE PKWY, W. BUFFALO, NEW YORK 14224-1322	
FINISH: -	CHECKED	AJC	09/01/11	TITLE: HD-800 DYNAMOMETER		
	THIRD ANGLE PROJECTION 			UNLESS OTHERWISE SPECIFIED: DIMENSIONS ARE IN INCHES DIAMETERS CONCENTRIC: .003 TIR FACES PERPENDICULAR: .003 INTERPRETATION PER ASME Y14.5M-1994 REMOVE ALL BURRS AND BREAK SHARP EDGES .005/.010 X 45° INSIDE CORNERS TO BE R .02 MAX TOLERANCES: .XX ± .01 X/Y ± 1/64" .XXX ± .005 X° ± 1° SURFACE FINISH 125 RMS MAX		
THIS DRAWING AND SPECIFICATION CONTAINS PROPRIETARY INFORMATION TO MAGTROL INC. ANY DISCLOSURE OR REPRODUCTION OF THIS DOCUMENT WITHOUT WRITTEN AUTHORIZATION FROM MAGTROL INC. IS EXPRESSLY PROHIBITED				DWG NO: HD-800-0100		REV D
SIZE B		SCALE 1:12	SHEET # 2 OF 2			

NOTE: DIMENSIONS IN [] ARE mm.