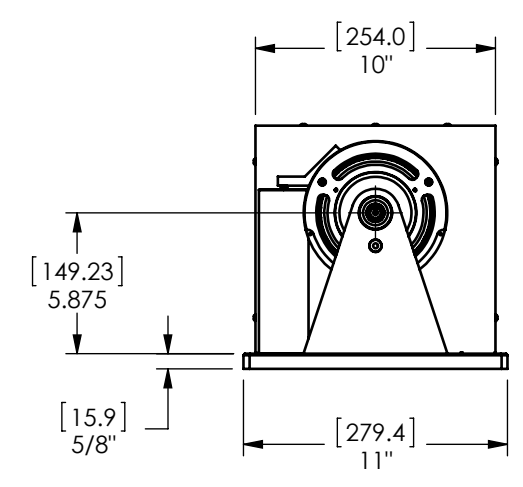
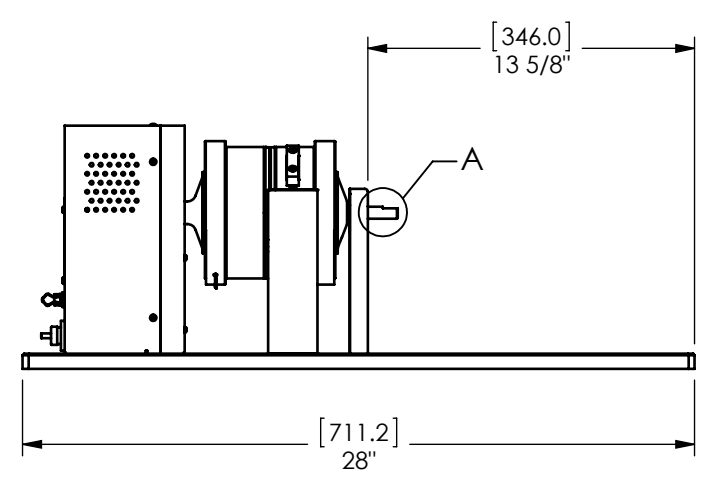
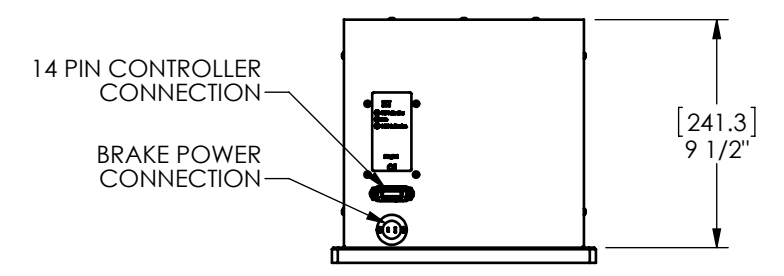
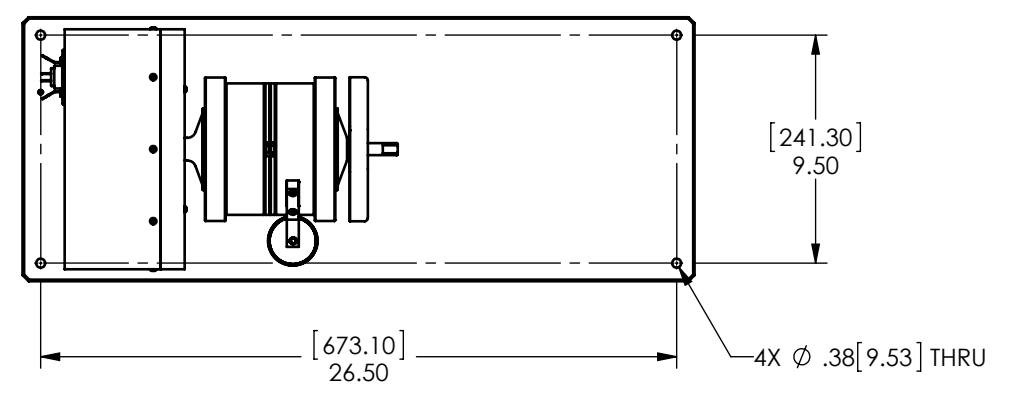
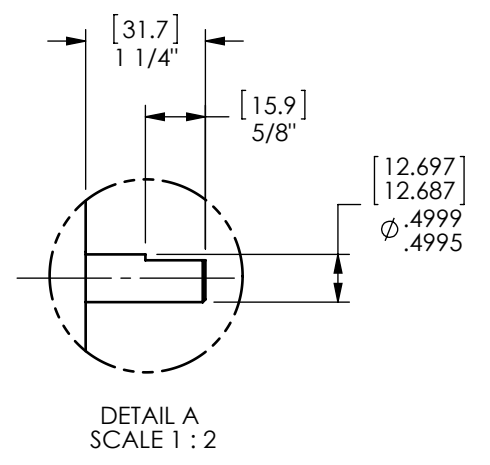
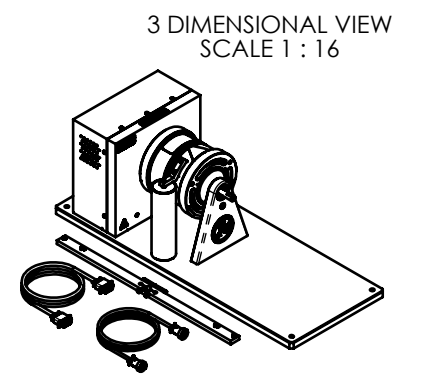


MODEL	TORQUE MEASURE UNIT CODE (-XXX)	STOCK CODE	MAXIMUM TORQUE RANGE	DRAG TORQUE DE-ENERGIZED AT 1000 RPM	NOMINAL INPUT INERTIA		MAXIMUM POWER		MAXIMUM SPEED (RPM)	COOLING METHOD
					(lb•ft•s ²)	(kg•m ²)	5-MINUTE (Watts)	CONTINUOUS (Watts)		
HD-705-XXX	5N	006415	6.20 N m	0.023 N m	1.10 x 10 ⁻³	1.49 x 10 ⁻³	1,400	300	25,000	CONVECTION
	5NA	006715								
	6N	005932	55.0 lb in	0.2 lb in						
	6NA	005935								
	7N	005933	62.0 kg cm	0.24 kg cm						
	7NA	005936								
	8N	005934	6.20 N m	0.023 N m						
	8NA	005937								

SOLID MODEL AVAILABLE



INSTALLATION DRAWING

MATERIAL:	DESIGN	-	-		MAGTROL INC. 70 GARDENVILLE PKWY, W. BUFFALO, NEW YORK 14224-1322
FINISH:	DRAWN	AJC	04/15/02		
THIRD ANGLE PROJECTION	CHECKED	DTW	04/15/02	TITLE: HD-705 DYNAMOMETER	
THIS DRAWING AND SPECIFICATION CONTAINS PROPRIETARY INFORMATION TO MAGTROL INC. ANY DISCLOSURE OR REPRODUCTION OF THIS DOCUMENT WITHOUT WRITTEN AUTHORIZATION FROM MAGTROL INC. IS EXPRESSLY PROHIBITED	UNLESS OTHERWISE SPECIFIED: DIMENSIONS ARE IN INCHES DIAMETERS CONCENTRIC: .003 TIR FACES PERPENDICULAR: .003 INTERPRETATION PER ASME Y14.5M-1994 REMOVE ALL BURRS AND BREAK SHARP EDGES .005/.010 X 45° INSIDE CORNERS TO BE R .02 MAX TOLERANCES: .XX ± .01 X/Y ± 1/64" .XXX ± .005 ANG ± 1° SURFACE FINISH 125 RMS MAX			USED ON: SIMILAR TO: DWG NO: HD-705	
	NOTE: DIMENSIONS IN [] ARE MILLIMETERS.			REV A	SIZE B