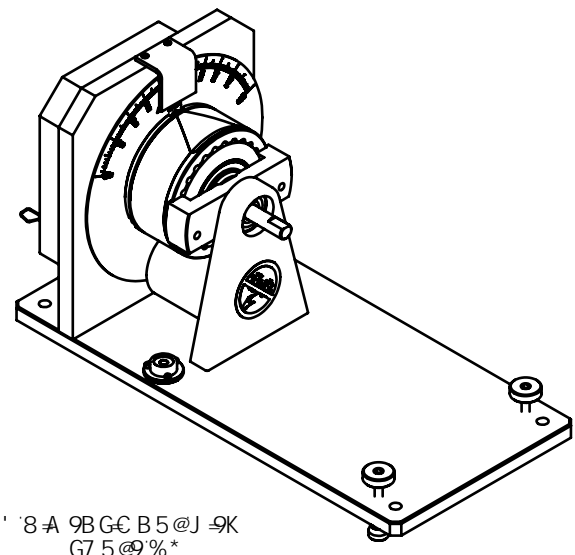
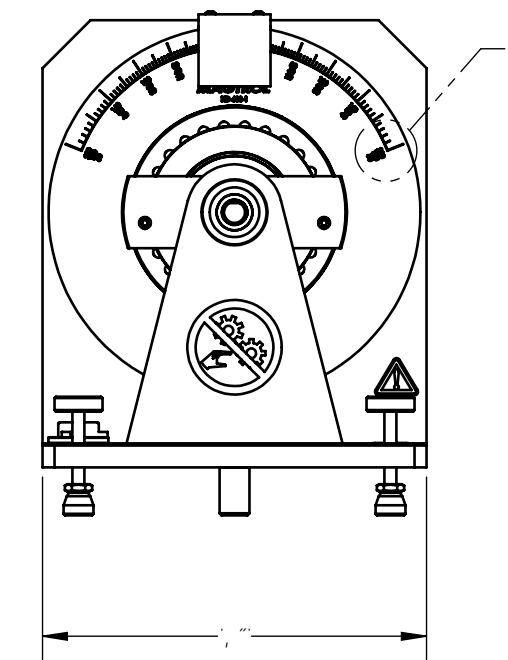
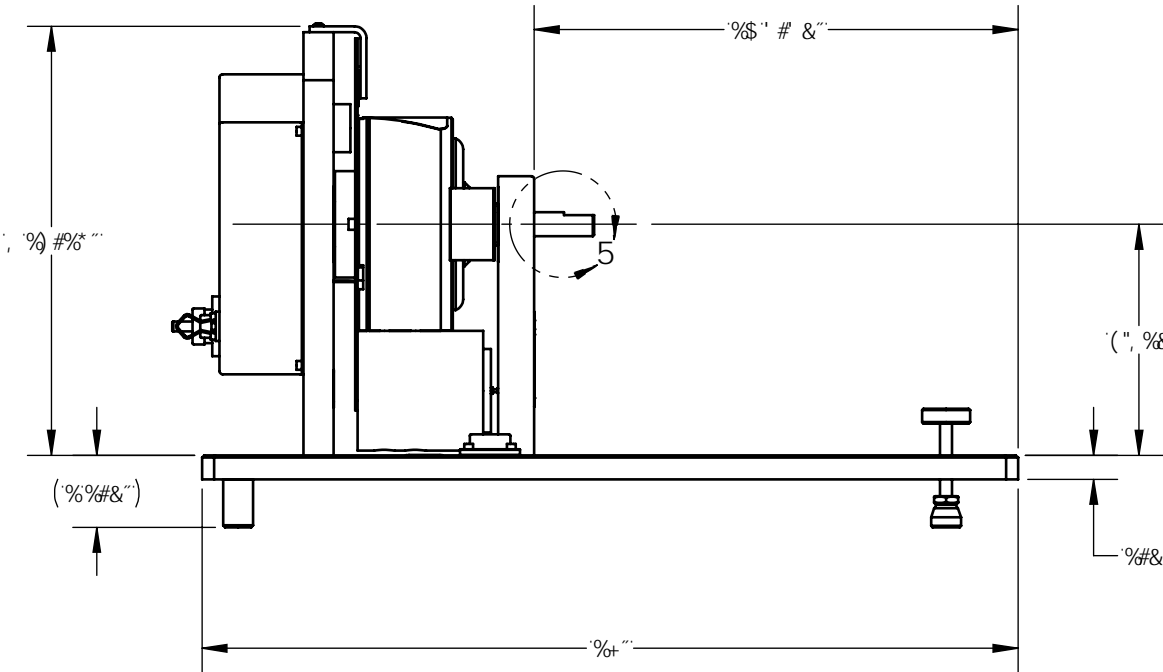
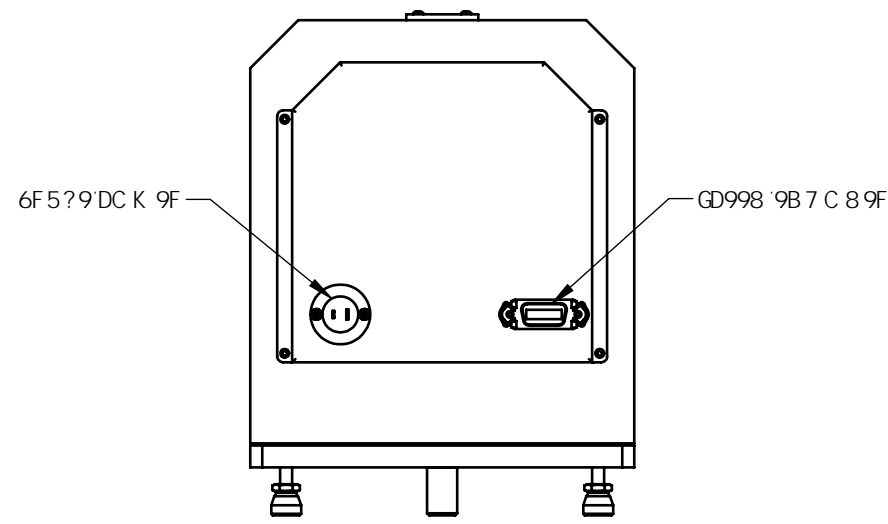
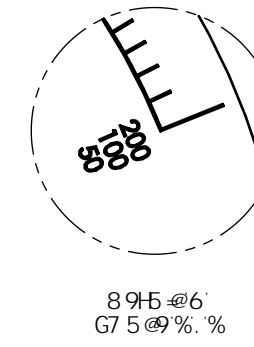
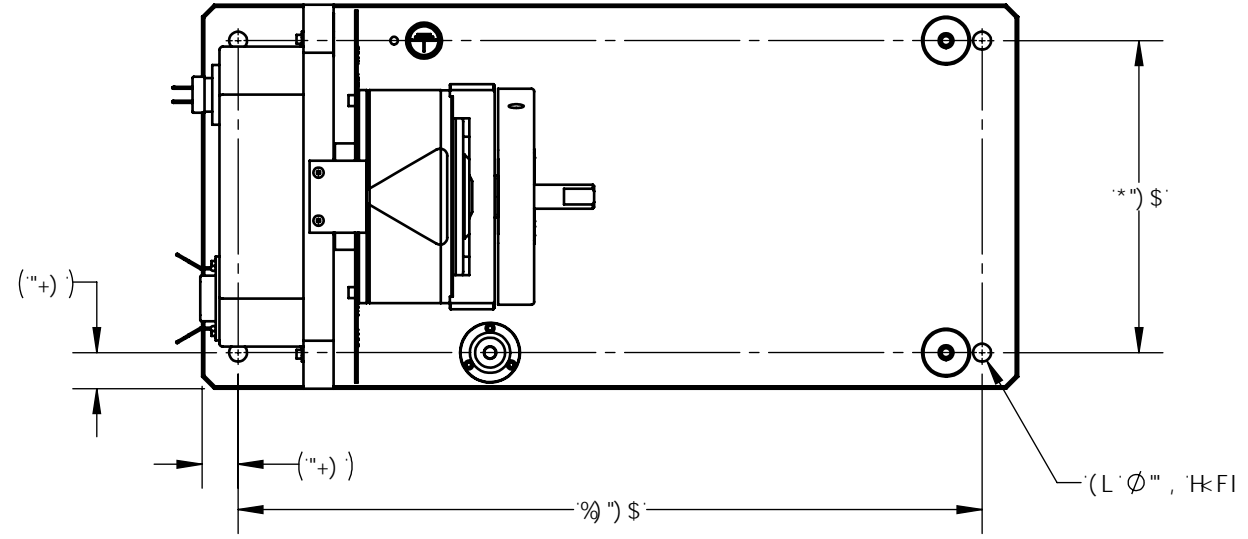
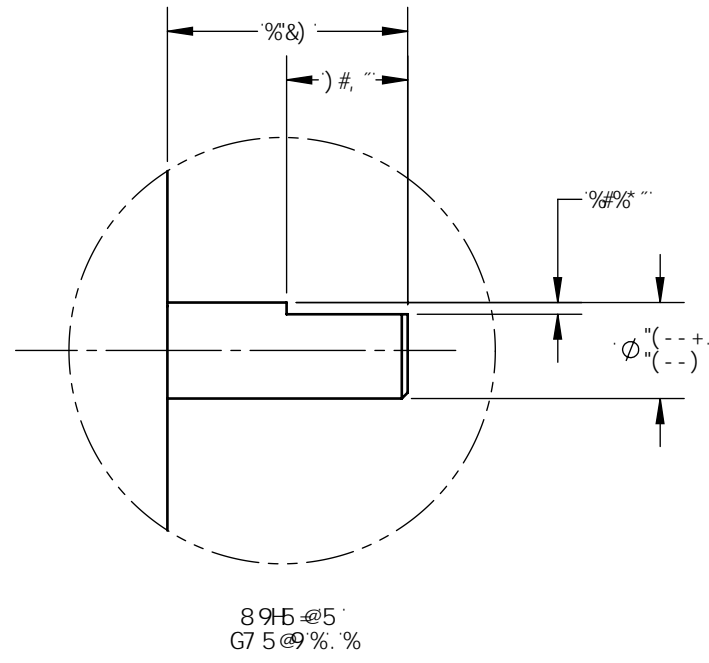


AC89@	GC7? 7C89	:I @G75@HCFE19			A5LAI A GD998 fFDA L	?-B9H7 DCK 9F F5HB; G
<8!*\$\$!%	\$\$) (-))\$cn"b"	%%\$cn"b"	&\$\$cn"b"	%%Z\$\$\$	+\$S

GC@8'AC89@5J5-66@



A 5HF 5@	89G+ B	!	!	A 5; HFC@B7" +\$; 5F89BJ @D?K M'K " 6! : : 5@C ZB 9K 'M: F? %((1% &&		
-B-G-	BF5K B	>9	S- #&+#S)			
H-F8	7 <97?98	8HK	\$\$& '\$S	<8!*\$\$!%8MB5A CA 9HFFZ 8-5@K 9# <H		
5B: @	I B @GGC H: 9K 69 GD97 = 98. 8-A 9BGC BG5F9-B B7 <9G 8-5A 9HFG7C B7 9HF-7. "\$S' HF : 57 9GD9FD9B8-71 @F. "\$S' BHFF DF 9H5HC B D9F 5GA 9 M(A) A 1% - (FGA C J 95 @61 FFG5B8 6F95? C<5FD'98: 9G'\$S) #S\$S L () S BG897 CFB9FGHC 69F '\$S&A 5L HC @9F5B7 9G 'LL - "\$S' L#M- %9" ("' 'LLL - "\$S' LS - %S G F: 57 9: -B-G< %&) FA GA 5L				F9J 5	
DFC >97 HC B	H-6BF5K B: 5B8 GD97 = 75HC B 7C DB5 8GD9FCDF 9B5FM B: CFA 5HC B HC A S: HFC @B7" 5BMB G7 @C G F9 CF F90FC 81 7HC B C: H-68C 71 A 9BH K #+C1 HK F #H8 51 H: C F 85HC B : FCA A 5: HFC @B7" G 9LDF 9G9MDFC < 64H8			GMP 7	G7 5 @ 9 % (Gc99H % (