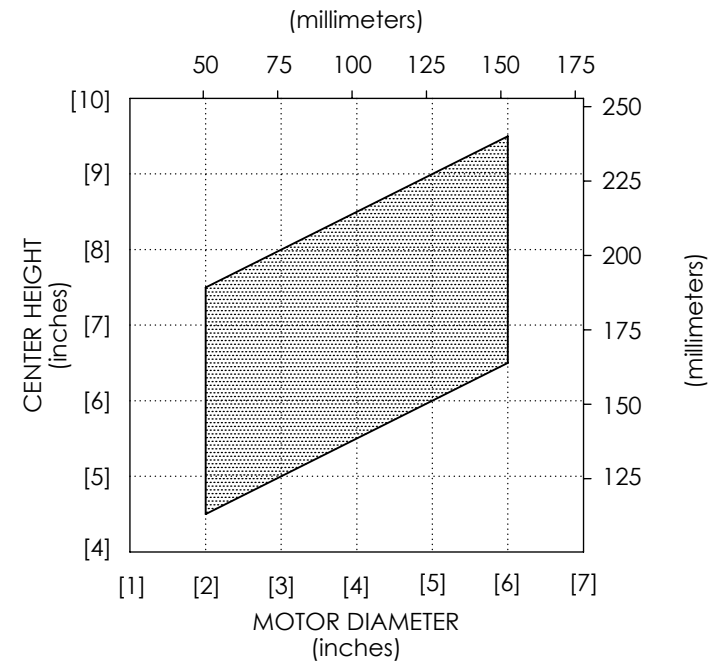
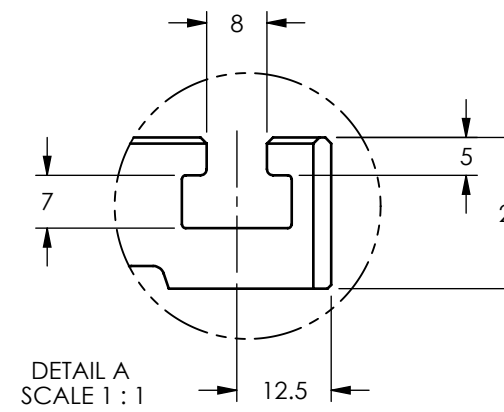
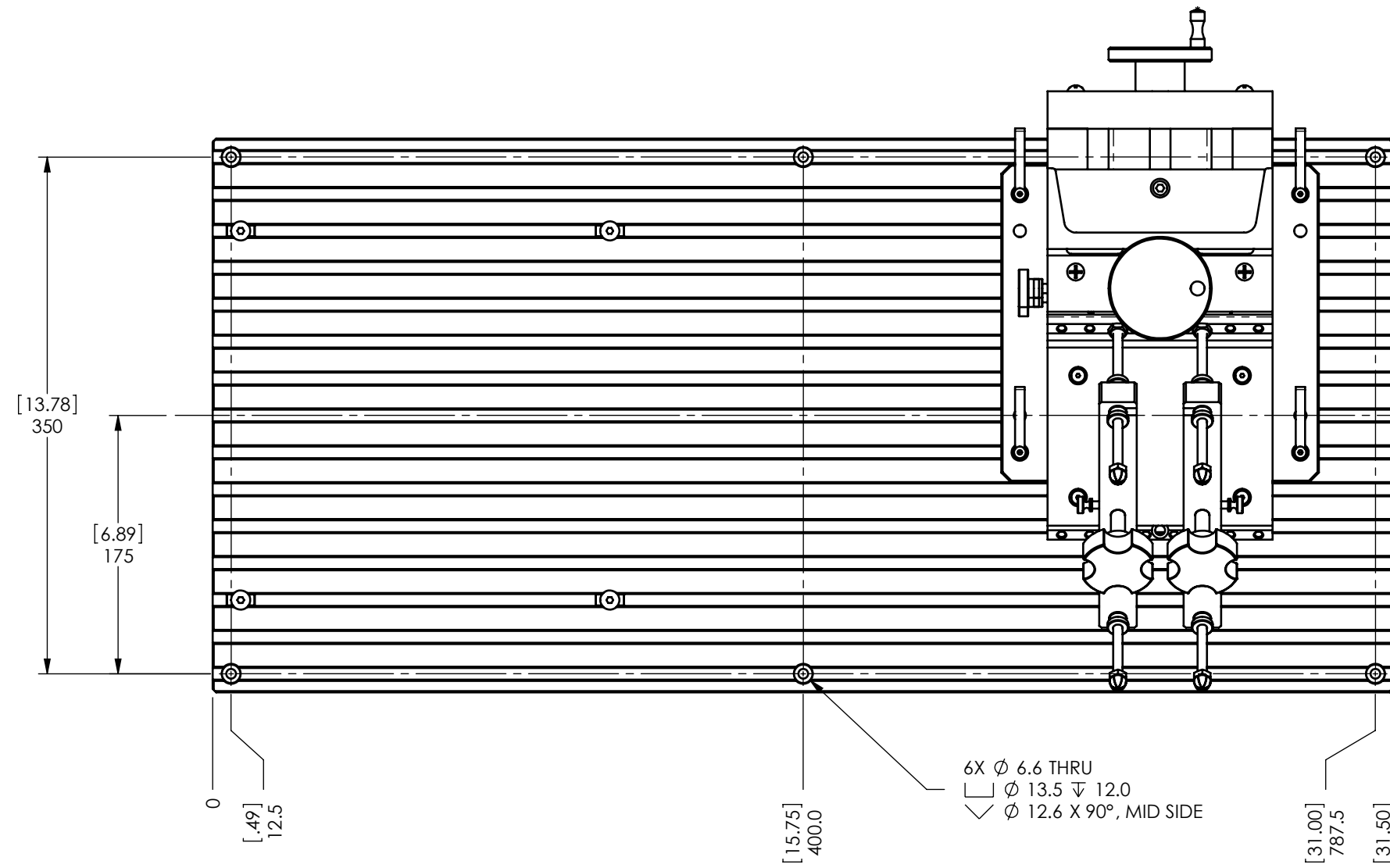
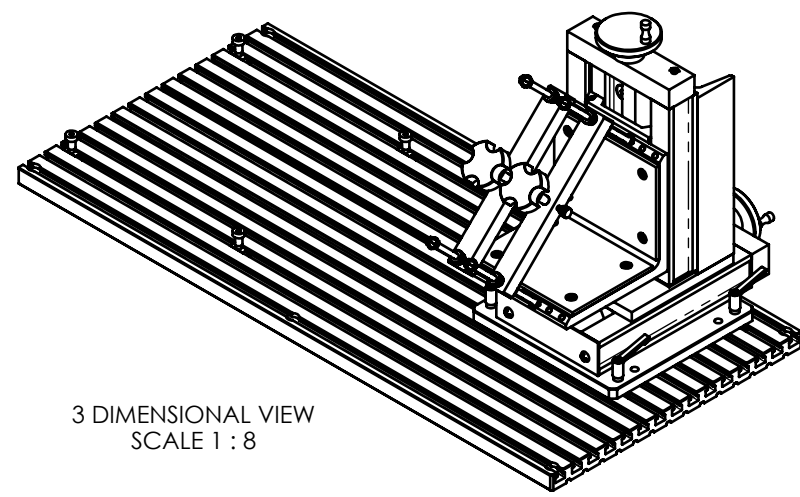


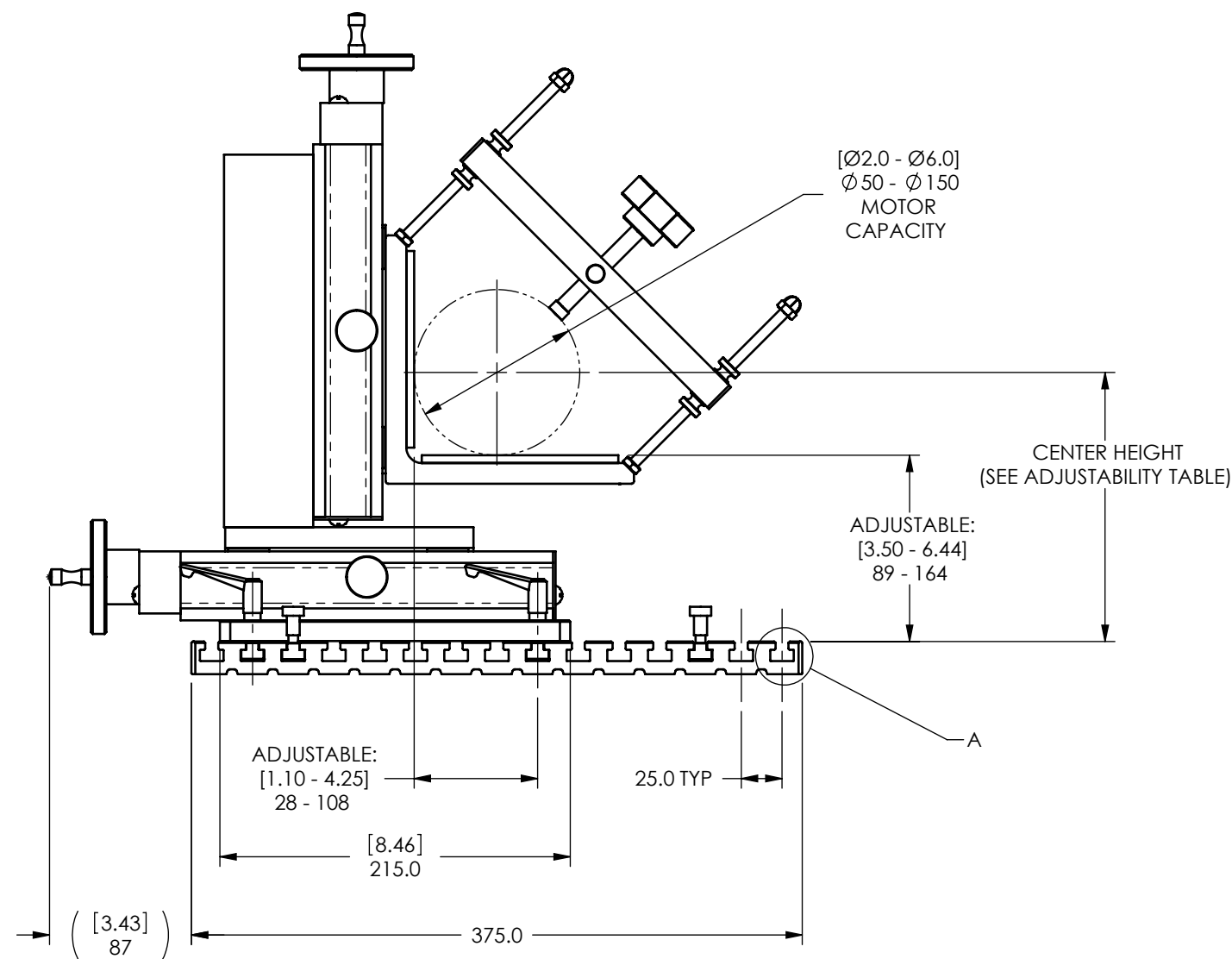
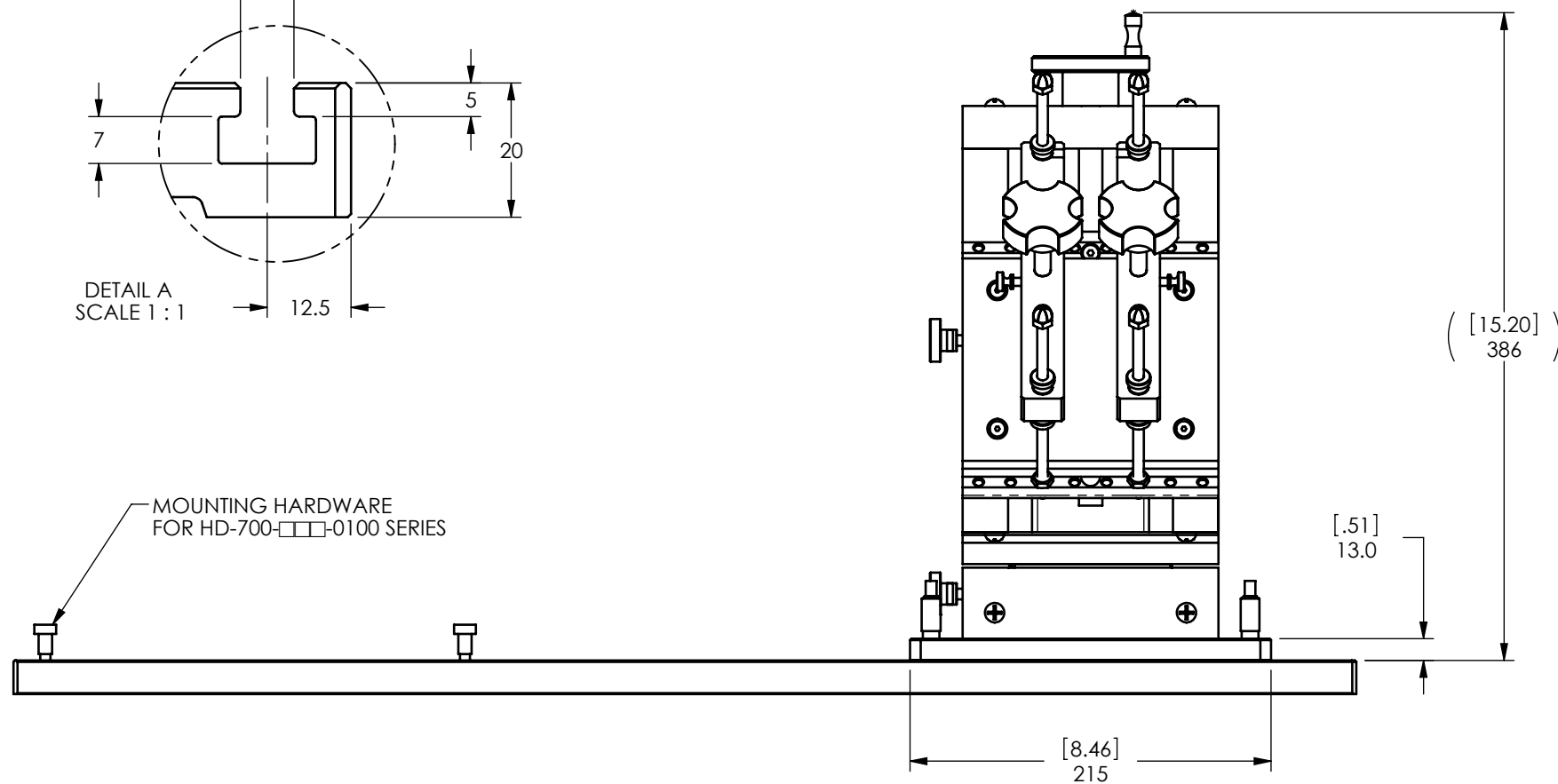
SOLID MODEL AVAILABLE



ADJUSTABILITY TABLE



MOUNTING HARDWARE  
FOR HD-700-□□□-0100 SERIES



- NOTES:
- DIMENSIONS IN [ ] ARE INCHES
  - ASSEMBLY STOCK CODE: 006574

INSTALLATION DRAWING

MATERIAL:	-	DESIGN	DTW	03-04-04	<p><b>MAGTROL INC.</b> 70 GARDENVILLE PKWY. W. BUFFALO, NEW YORK 14224-1322</p>		
FINISH:	-	DRAWN	DTW	03-29-04			
		CHECKED	AJC	03-29-04			
THIRD ANGLE PROJECTION		<small>UNLESS OTHERWISE SPECIFIED: DIMENSIONS ARE IN MILLIMETERS, DIAMETERS CONCENTRIC: 0.08 TIR, FACES PERPENDICULAR: 0.08 INTERPRETATION PER ASME Y14.5M-1994 REMOVE ALL BURRS AND BREAK SHARP EDGES 0.13/0.25 X 45°, ALL INSIDE CORNERS TO BE R 0.5 MAX. TOLERANCES: X ± 0.4 X.XX ± 0.13 X.X ± 0.25 ANG. ± 1° SURFACE FINISH 3.2 µm MAX. U.O.S.</small>			TITLE	AMF-2; ADJUST MOTOR FIXTURE	
<small>THIS DRAWING AND SPECIFICATION CONTAINS PROPRIETARY INFORMATION TO MAGTROL INC. ANY DISCLOSURE OR REPRODUCTION OF THIS DOCUMENT WITHOUT WRITTEN AUTHORIZATION FROM MAGTROL INC. IS EXPRESSLY PROHIBITED</small>					USED ON: -	REV	B
					DWG. NO.	AMF-2	
					SCALE	1:4	SHEET #