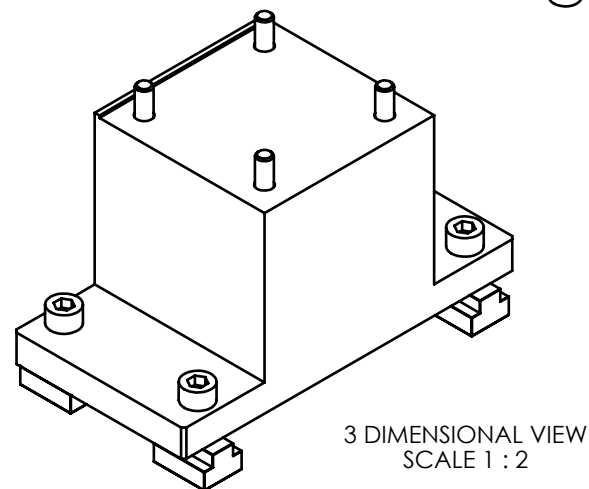
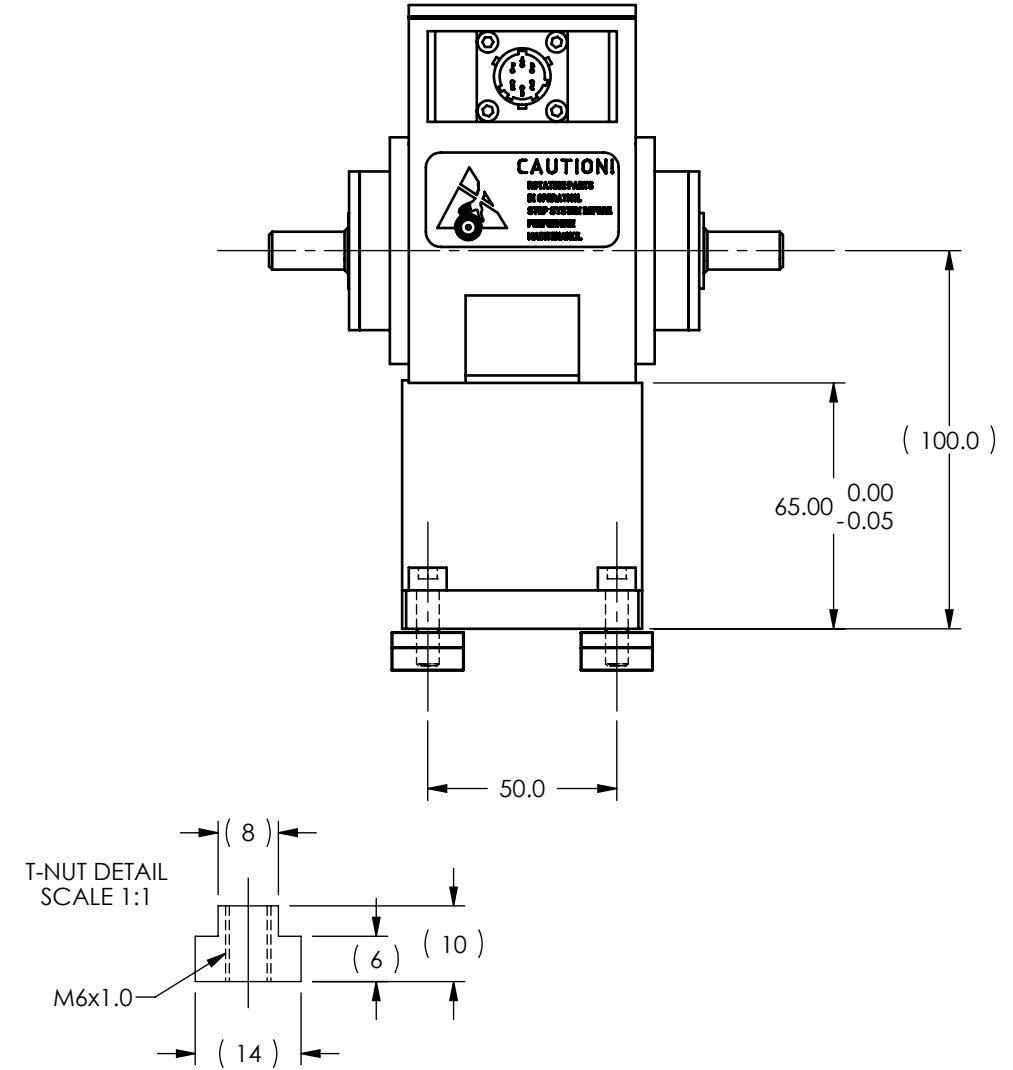
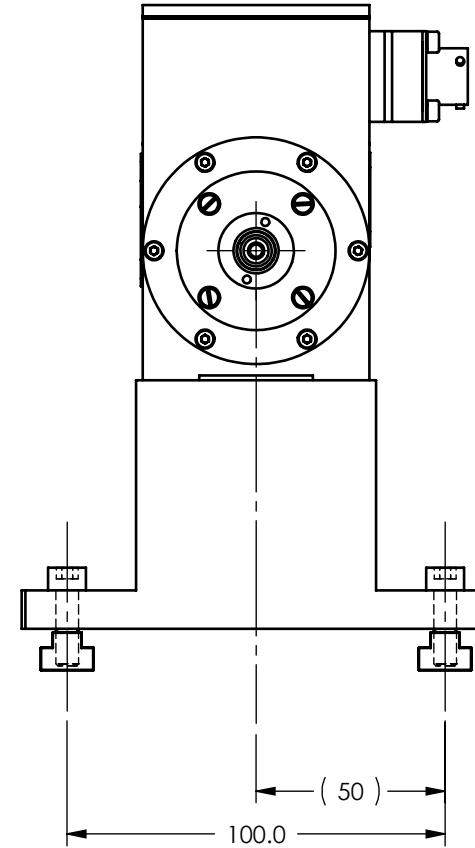
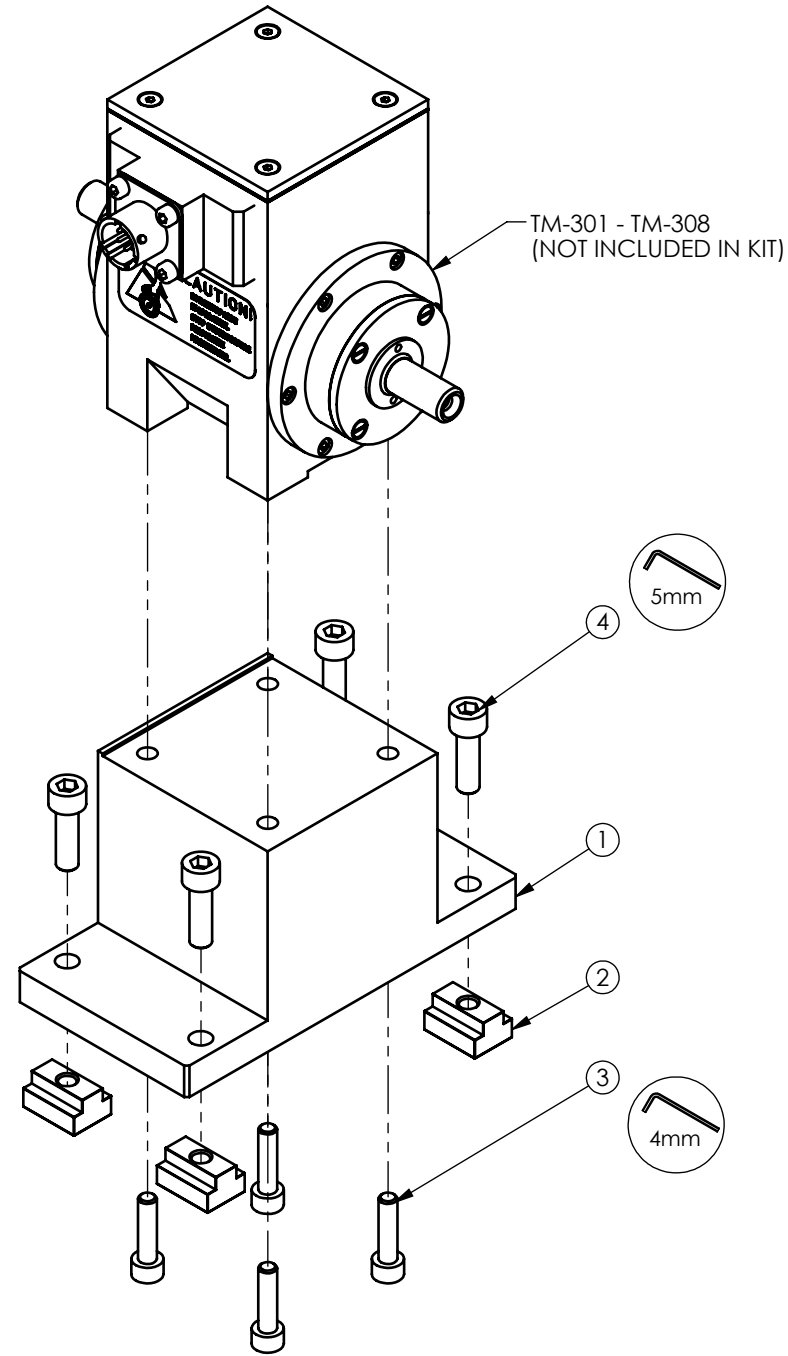


SOLID MODEL AVAILABLE

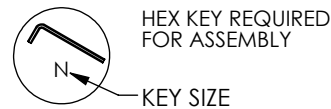
ITEM NO.	PART NUMBER	DESCRIPTION	QTY
1	205454	RISER BLOCK, RTM-1-100	1
2	504215	T-NUT, M6x1.0 X 8mm SLOT WIDTH	4
3	504253	SHCS M5x0.8 X 20mm 18-8 SS	4
4	505677	SHCS M6x1 X 20mm 18-8 SS	4




3 DIMENSIONAL VIEW
SCALE 1 : 2

STOCK CODE: 005796

- NOTES:**
- CENTER HEIGHT IS EQUIVALENT TO AHB-5
 - T-NUT SPACING IS PT-SERIES COMPATIBLE



MATERIAL:	DESIGN	JEF	08/07/06	 MAGTROL INC. 70 GARDENVILLE PKWY, W. BUFFALO, NEW YORK 14224-1322
FINISH:	DRAWN	JEF	06/09/08	
THIRD ANGLE PROJECTION	CHECKED	DTW	06/27/08	
THIS DRAWING AND SPECIFICATION CONTAINS PROPRIETARY INFORMATION TO MAGTROL INC. ANY DISCLOSURE OR REPRODUCTION OF THIS DOCUMENT WITHOUT WRITTEN AUTHORIZATION FROM MAGTROL INC. IS EXPRESSLY PROHIBITED				UNLESS OTHERWISE SPECIFIED: DIMENSIONS ARE IN MILLIMETERS, DIAMETERS CONCENTRIC: 0.08 TIR, FACES PERPENDICULAR: 0.08 INTERPRETATION PER ASME Y14.5M-1994 REMOVE ALL BURRS AND BREAK SHARP EDGES 0.13/0.25 X 45°, ALL INSIDE CORNERS TO BE R 0.5 MAX. TOLERANCES: X ±0.4 X.XX ±0.13 X.X ±0.25 ANG. ±1° SURFACE FINISH 3.2 μm MAX. U.O.S.
TITLE: RTM-1-100 RISER KIT				USED ON: - SIMILAR TO: -
DRAWING NUMBER: RTM-1-100				REV A
SIZE	SCALE	SHEET #		
B	1:2	2 OF 2		