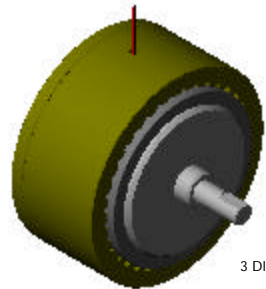
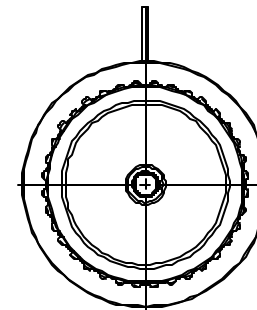
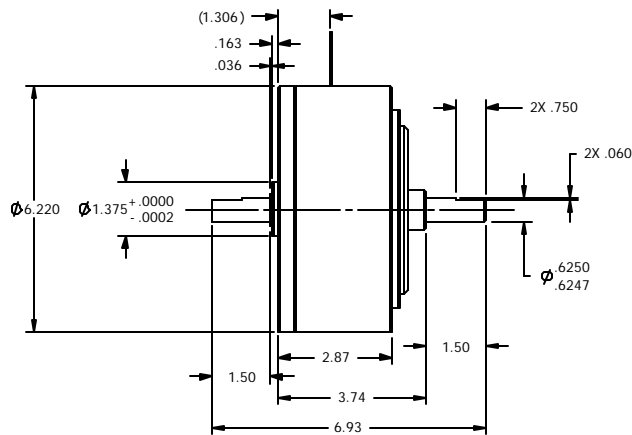
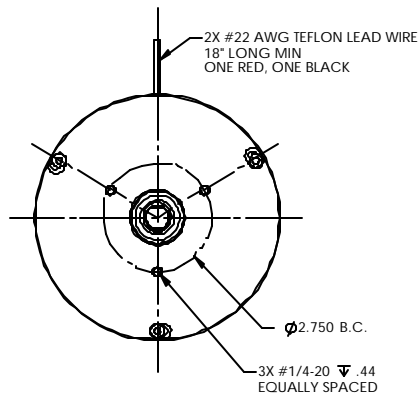


SOLID MODEL AVAILABLE

MODEL	COIL NUMBER	STOCK CODE NUMBER	MINIMUM TORQUE AT RATED CURRENT (oz in)	RATED CURRENT (mA)	RESISTANCE ±10% @ 25°C (ohms)	VOLTAGE (Vdc)	NOMINAL POWER (Watts)	MAXIMUM SPEED (rpm)	KINETIC POWER RATINGS (Watts)		DE-ENERGIZED DRAG TORQUE @ 1000 rpm (oz in)	EXTERNAL INERTIA (lb in s ²)	ANGULAR ACCELERATION (rad/s ²)
									5 MINUTE (watts)	CONTINUOUS (watts)			
MHB-750	-1 (90 Vdc)	004874	750	107	845	90	9.6	7,000	1000	200	7	1.283 X 10 ⁻²	3,450
	-2 (24 Vdc)	004872	750	383	60	23	8.8						
	-3 (12 Vdc)	005461	750	690	20	13.8	9.5						



3 DIMENSIONAL VIEW
SCALE 1 : 3

MATCHED FOR TORQUE AT RATED CURRENT

MATERIAL CODE		MATERIAL TYPE		MATERIAL SIZE	
FINISH:		DESIGN	-	-	-
THIRD ANGLE PROJECTION		DRAWN	AJC	05/09/02	<p>MAGTROL INC. 70 GARDENVILLE PKWY, W. BUFFALO, NEW YORK 14224-1322</p>
THIS DRAWING AND SPECIFICATION CONTAINS PROPRIETARY INFORMATION TO MAGTROL INC. ANY DISCLOSURE OR REPRODUCTION OF THIS DOCUMENT WITHOUT WRITTEN AUTHORIZATION FROM MAGTROL INC. IS EXPRESSLY PROHIBITED		CHECKED	DTW	05/09/02	
UNLESS OTHERWISE SPECIFIED: DIMENSIONS ARE IN INCHES. DIAMETERS CONCENTRIC-.003 TIR, FACES PERPENDICULAR-.003 INTERPRETATION PER ASME Y14.5M-1994 REMOVE ALL BURRS AND BREAK SHARP EDGES .005/010 X 45°, ALL INSIDE CORNERS TO BE .02 R MAX. TOLERANCES .XX -.±.010 FRAC.-±1/64" .XXX -.±.005 ANG. -.±1° SURFACE FINISH 125 RMS MAX. U. O. S.		PROCESS CHK	-	-	
TITLE		MHB-750 MATCHED HYSTERESIS BRAKE		USED ON: DWG. NO. MHB-750	
REV		A		SIZE B SCALE 1 : 3 SHEET # 2 OF 2	