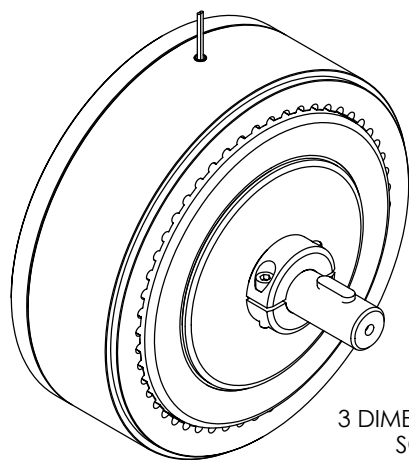
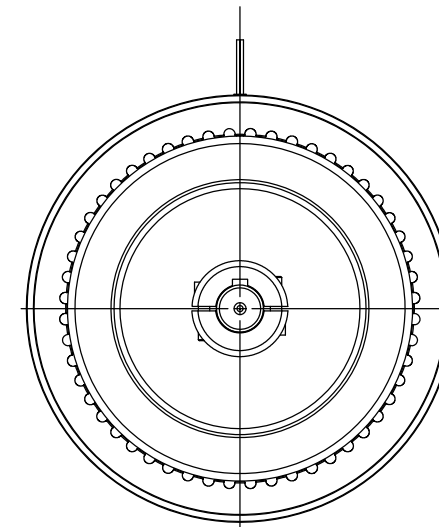
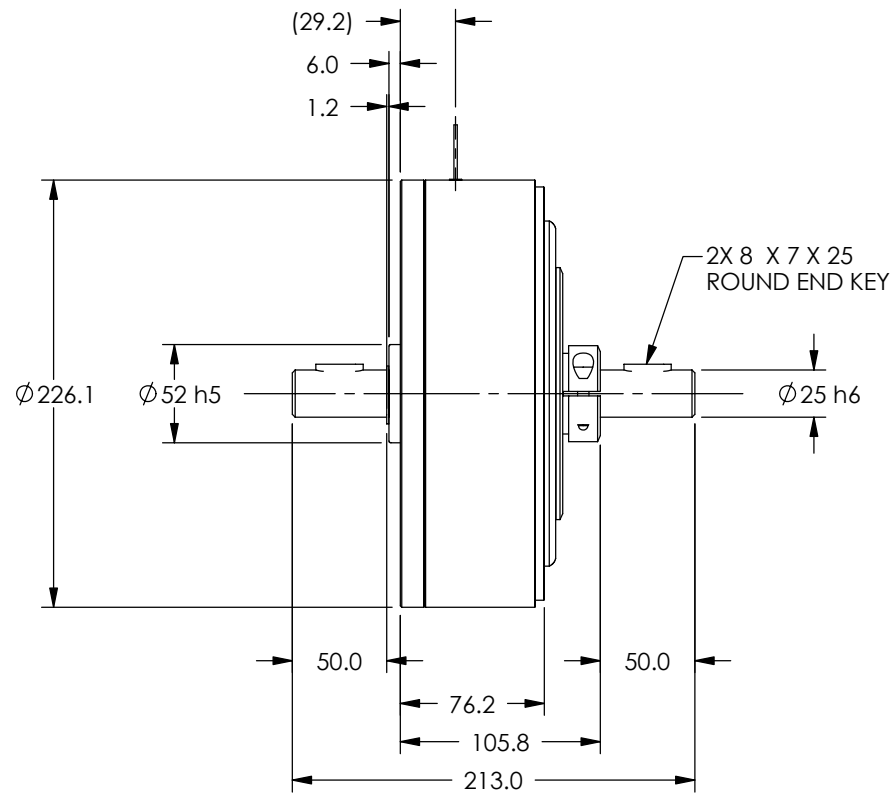
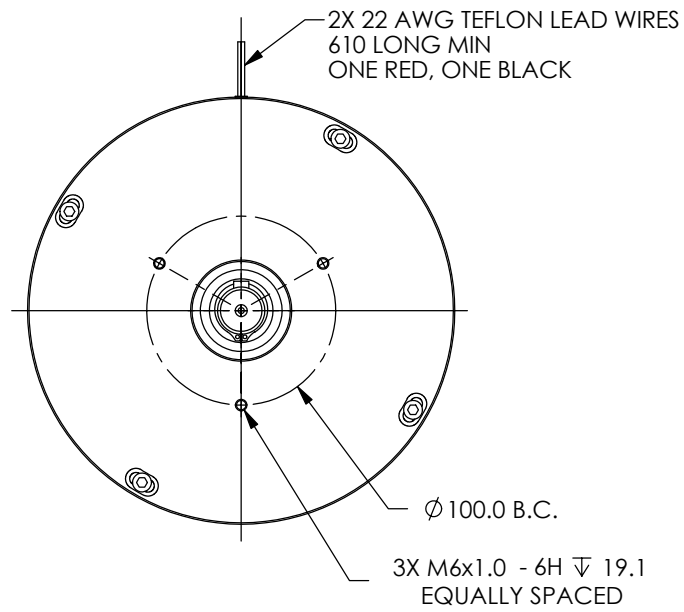



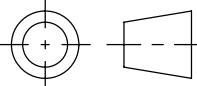
SOLID MODEL AVAILABLE

MODEL	COIL NUMBER	STOCK CODE	MIN. TORQUE AT RATED CURRENT (Nm)	RATED CURRENT (mA)	RESISTANCE ±10% @ 25°C (ohms)	VOLTAGE (Vdc)	NOMINAL POWER (watts)	MAXIMUM SPEED (RPM)	KINETIC POWER RATINGS		DE-ENERGIZED DRAG TORQUE @ 1000 RPM (Nm)	EXTERNAL INERTIA (kg cm <sup>2</sup> )	ANGULAR ACCELERATION (rad/s <sup>2</sup> )
									5 MINUTE (watts)	CONTINUOUS (watts)			
HB-1750M	-1 (90 Vdc)	-	12.36	-	-	-	-	6,000	1,200	350	9.18 X 10 <sup>-2</sup>	6.25 X 10 <sup>1</sup>	2,070
	-2 (24 Vdc)	004112	12.36	500	52	26	13						
	-3 (12 Vdc)	-	12.36	-	-	-	-						

13 Nm IS ATTAINABLE @ APPROXIMATELY 600 mA



3 DIMENSIONAL VIEW  
SCALE 1 : 4

MATERIAL:	DESIGN	-	-		<b>MAGTROL INC.</b> 70 GARDENVILLE PKWY, W. BUFFALO, NEW YORK 14224-1322	
	DRAWN	AJC	03/30/04			
FINISH:	CHECKED	DTW	03/30/04	TITLE <b>HB-1750M METRIC HYSTERESIS BRAKE</b>		
	THIRD ANGLE PROJECTION 					
UNLESS OTHERWISE SPECIFIED: DIMENSIONS ARE IN MILLIMETERS, DIAMETERS CONCENTRIC: .08 TIR, FACES PERPENDICULAR: .08 INTERPRETATION PER ASME Y14.5M-1994 REMOVE ALL BURRS AND BREAK SHARP EDGES .13/.25 X 45°, ALL INSIDE CORNERS TO BE .5 R MAX. TOLERANCES: X ± .4            .XX ± .13 .X ± .25        ANG. ± 1° SURFACE FINISH 3.2 µm MAX. U.O.S.				USED ON: - SIMILAR TO: -		REV E
THIS DRAWING AND SPECIFICATION CONTAINS PROPRIETARY INFORMATION TO MAGTROL INC. ANY DISCLOSURE OR REPRODUCTION OF THIS DOCUMENT WITHOUT WRITTEN AUTHORIZATION FROM MAGTROL INC. IS EXPRESSLY PROHIBITED				DWG. NO. <b>HB-1750M</b>		SIZE <b>B</b>
				SCALE <b>1:4</b>	SHEET # <b>3 OF 3</b>	