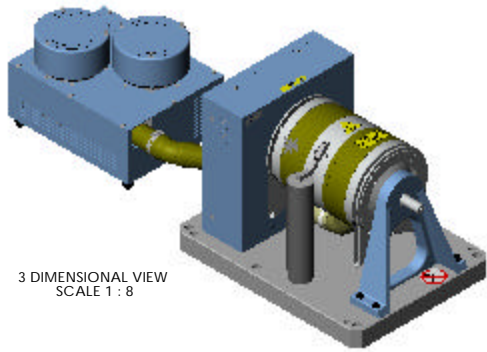
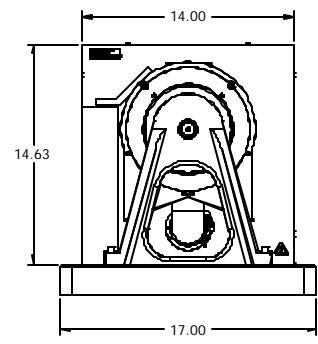
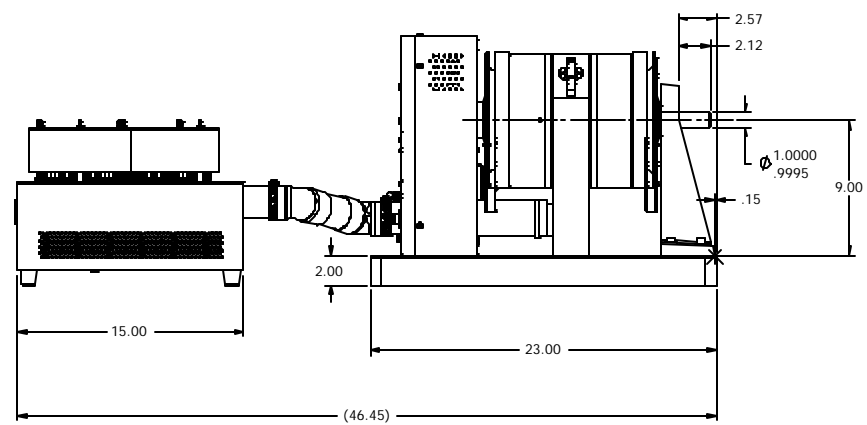
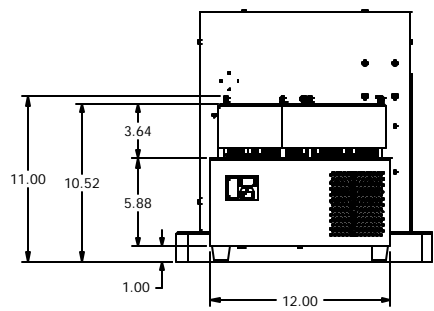
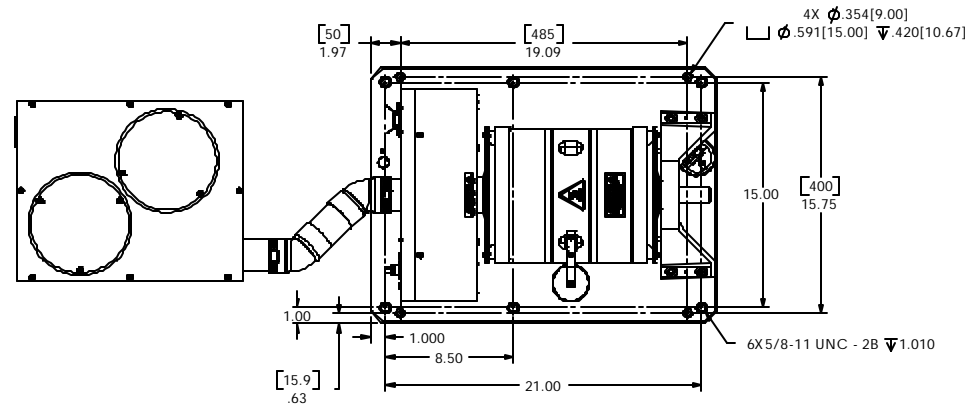


MODEL	TORQUE MEASURE UNIT CODE	STOCK CODE NUMBER	MAXIMUM TORQUE RANGE	DRAG TORQUE DE-ENERGIZED AT 1000 RPM	DIGITAL TORQUE RESOLUTION	NOMINAL INPUT		MAXIMUM POWER		MAXIMUM SPEED (rpm)	BRAKE COOLING METHOD
						(lb ft s ²)	(kg m ²)	5 MINUTE (watts)	CONTINUOUS (watts)		
HD-815	6N	005325	250 lb in	1.2 lb in	1 lb in	8.81 x 10 ⁻³	1.91 x 10 ⁻²	7025	6000	12,000	BLOWER
	6NA	005326	250 lb in	1.2 lb in	1 lb in						
	7N	005327	280 kg cm	1.5 kg cm	1 kg cm						
	7NA	005328	280 kg cm	1.5 kg cm	1 kg cm						
	8N	005329	28 Nm	.14 Nm	.1 Nm						
	8NA	005330	28 Nm	.14 Nm	.1 Nm						
	9N	-	21 lb ft	.1 lb ft	.083 lb ft						
	9NA	-	21 lb ft	.1 lb ft	.083 lb ft						

SOLID MODEL AVAILABLE



3 DIMENSIONAL VIEW
SCALE 1 : 8

DIMENSIONS IN [] ARE IN MILLIMETERS

MATERIAL CODE	MATERIAL TYPE	MATERIAL SIZE	
FINISH	DESIGN		
	DRAWN	AIC	08/13/04
	CHECKED	DTW	08/13/04
	PROCESS CHK		
THIRD ANGLE PROJECTION	UNLESS OTHERWISE SPECIFIED: DIMENSIONS ARE IN INCHES. DIAMETERS CONCENTRIC - .003 TIR. FACES PERPENDICULAR - .003 INTERPRETATION PER ASME Y14.5M-1994 REMOVE ALL BURRS AND BREAK SHARP EDGES .005/.010 X 45°, ALL INSIDE CORNERS TO BE .02 R MAX. TOLERANCES .XX ±.01 FRAC. ±1/64" XXX ±.005 ANG. ±1° SURFACE FINISH 125 RMS MAX U.O.S.		TITLE HD-815-0100 (6, 7, 8) DYNAMOMETER
THIS DRAWING AND SPECIFICATION CONTAINS PROPRIETARY INFORMATION TO MAGTROL INC. ANY DISCLOSURE OR REPRODUCTION OF THIS DOCUMENT WITHOUT WRITTEN AUTHORIZATION FROM MAGTROL INC. IS EXPRESSLY PROHIBITED		DWG. NO. HD-815-0100	
SIZE C	SCALE 1:6	SHEET # 2 OF 2	REV

