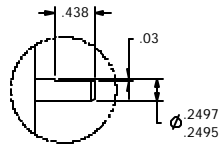
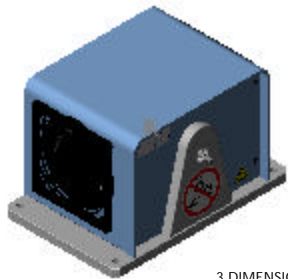
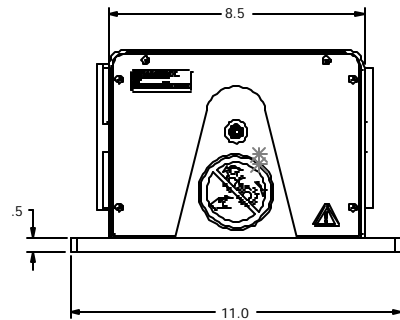
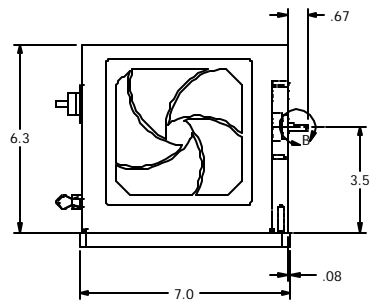
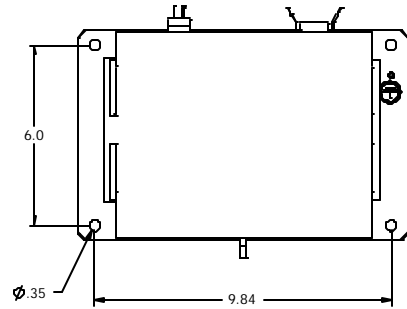


MODEL	TORQUE MEASURE UNIT CODE	STOCK CODE NUMBER	MAXIMUM TORQUE RANGE	DRAG TORQUE DE-ENERGIZED AT 1000 RPM	DIGITAL TORQUE RESOLUTION	NOMINAL INPUT		MAXIMUM POWER			BRAKE COOLING METHOD
						(lb ft s <sup>2</sup> )	(kg m <sup>2</sup> )	5 MINUTE (watts)	CONTINOUS (watts)	MAXIMUM SPEED (rpm)	
HD-400-0100	6N	005194	40 oz in	.25 oz in	.1 oz in	1.55 x 10 <sup>-5</sup>	2.1 x 10 <sup>6</sup>	200	55	25,000	CONVECTION
	6NA	005300	40 oz in	.25 oz in	.1 oz in						
	7N	005301	2.8 kg cm	.02 kg cm	.01 kg cm						
	7NA	005302	2.8 kg cm	.02 kg cm	.01 kg cm						
	8N	005303	280 mNm	2 mNm	1 mNm						
	8NA	005199	280 mNm	2 mNm	1 mNm						
	9N	-	3.3 oz ft	.02 oz ft	.008 oz ft						
	9NA	-	3.3 oz ft	.02 oz ft	.008 oz ft						



DETAIL B  
SCALE 1 : 1



3 DIMENSIONAL VIEW  
SCALE 1 : 4

MATERIAL CODE	MATERIAL TYPE	MATERIAL SIZE	
FINISH	DESIGN		
	DRAWN	AIC	09/28/04
	CHECKED	DTW	09/28/04
	PROCESS CHK		
THIRD ANGLE PROJECTION	UNLESS OTHERWISE SPECIFIED: DIMENSIONS ARE IN INCHES. DIAMETERS CONCENTRIC - .003 TIR. FACES PERPENDICULAR - .003 INTERPRETATION PER ASME Y14.5M-1994 REMOVE ALL BURRS AND BREAK SHARP EDGES .005/.010 X 45°, ALL INSIDE CORNERS TO BE .02 R MAX. TOLERANCES .XX ±.01 FRAC. ±1/64" .XXX ±.005 ANG. ±1° SURFACE FINISH 125 RMS MAX U.O.S.	TITLE	HD-400-0100 96, 7, 8) DYNAMOMETER
THIS DRAWING AND SPECIFICATION CONTAINS PROPRIETARY INFORMATION TO MAGTROL INC. ANY DISCLOSURE OR REPRODUCTION OF THIS DOCUMENT WITHOUT WRITTEN AUTHORIZATION FROM MAGTROL INC. IS EXPRESSLY PROHIBITED		DWG. NO.	HD-400-0100
		REV	
		SIZE	C
		SCALE	1:3
		SHEET #	2 OF 2