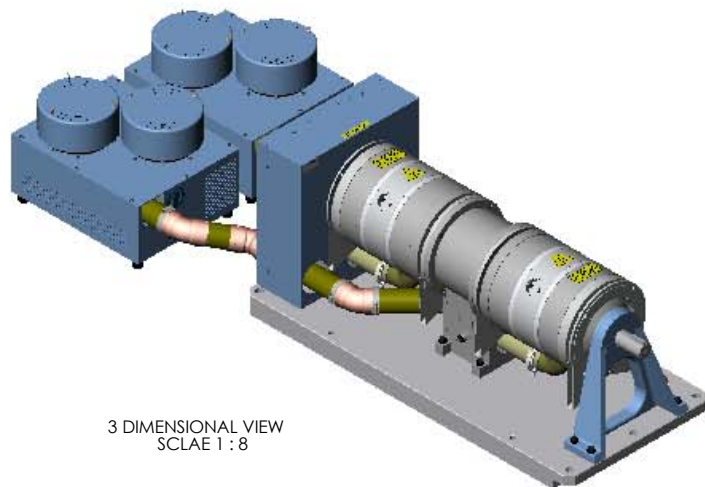
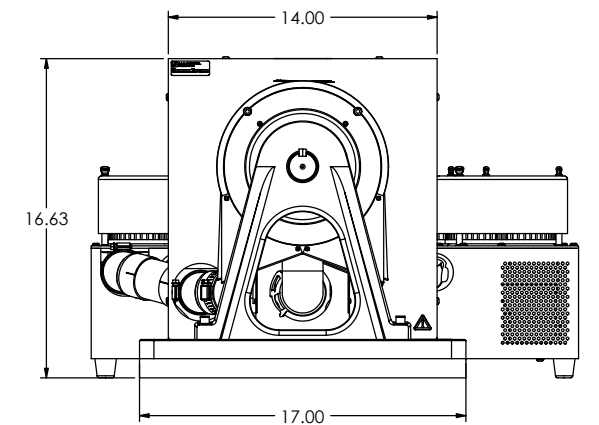
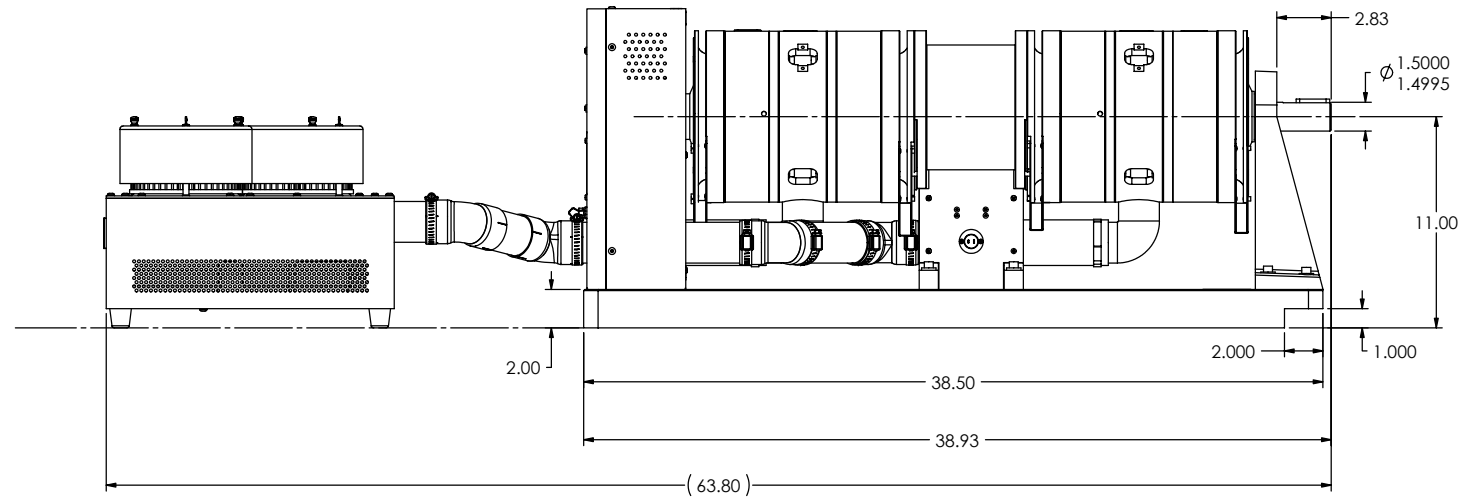
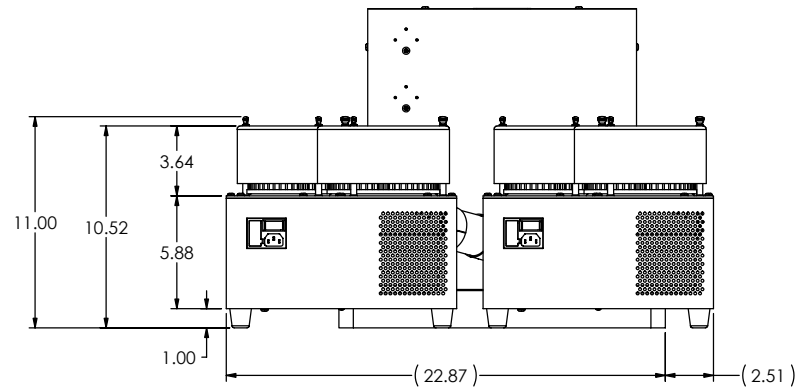
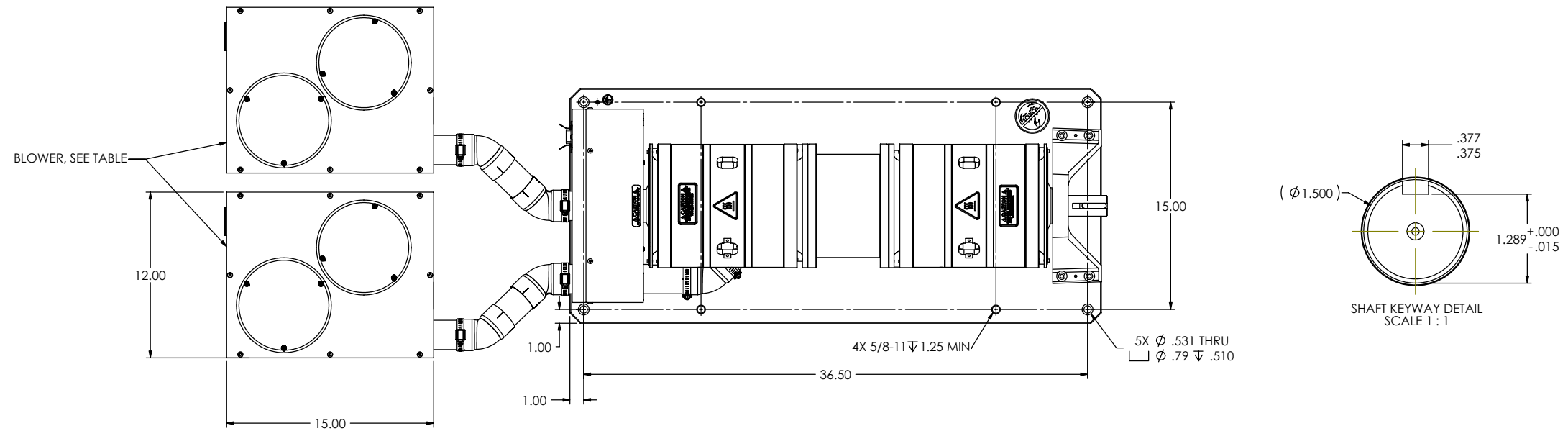


MODEL	TORQUE MEASURE UNIT CODE	STOCK CODE NUMBER	MAXIMUM TORQUE RANGE	DRAG TORQUE DE-ENERGIZED AT 1000 RPM	DIGITAL TORQUE RESOLUTION	NOMINAL INPUT		MAXIMUM POWER		MAXIMUM SPEED (rpm)	BRAKE COOLING METHOD	BLOWER STOCK CODE
						(lb ft s <sup>2</sup> )	(kg m <sup>2</sup> )	5 MINUTE (watts)	CONTINUOUS (watts)			
HD-825	6N	004527	500 lb in	3.5 lb in	1 lb in	1.85 x 10 <sup>-2</sup>	2.51 x 10 <sup>-2</sup>	14,000	12,000	8,000	BLOWER (2 DOUBLE UNITS)	803294
	6NA	004528	500 lb in	3.5 lb in	1 lb in							803296
	7N	004529	560 kg cm	4 kg cm	1 kg cm							803294
	7NA	004530	560 kg cm	4 kg cm	1 kg cm							803296
	8N	004531	56.5 Nm	22 Nm	.1 Nm							803294
	8NA	004532	56.5 Nm	22 Nm	.1 Nm							803296
	9N	004533	41.7 lb ft	29 lb ft	.083 lb ft							803294
	9NA	-	41.7 lb ft	29 lb ft	.083 lb ft							803296



3 DIMENSIONAL VIEW  
SCALE 1 : 8

MATERIAL	DESIGN	12/09/02	<b>MAGTROL INC.</b> 70 GARDENVILLE PKWY, W. BUFFALO, NEW YORK 14224-1322
FINISH	DRAWN	AJC	
	CHECKED	DTW	
THIRD ANGLE PROJECTION	UNLESS OTHERWISE SPECIFIED: DIMENSIONS ARE IN INCHES. DIAMETERS CONCENTRIC .003 TIR. FACES PERPENDICULAR .003 INTERPRETATION PER ASME Y14.5M-1994 REMOVE ALL BURRS AND BREAK SHARP EDGES .005/0.010 X 45°. ALL INSIDE CORNERS TO BE .02 R MAX. TOLERANCES: XX .±.01      FRAC. ±1/64" XXX ±.005      ANG. ±1° SURFACE FINISH 125 RMS MAX. U.O.S.		TITLE <b>HD-825-(6, 7, 8, 9)          DYNAMOMETER</b>
THIS DRAWING AND SPECIFICATION CONTAINS PROPRIETARY INFORMATION TO MAGTROL INC. ANY DISCLOSURE OR REPRODUCTION OF THIS DOCUMENT WITHOUT WRITTEN AUTHORIZATION FROM MAGTROL INC. IS EXPRESSLY PROHIBITED.	REV	HD-825	A
	SCALE	1:5	SHEET # 2 OF 2