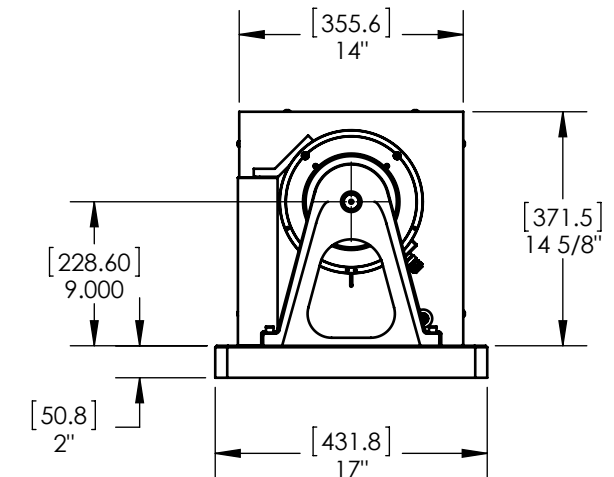
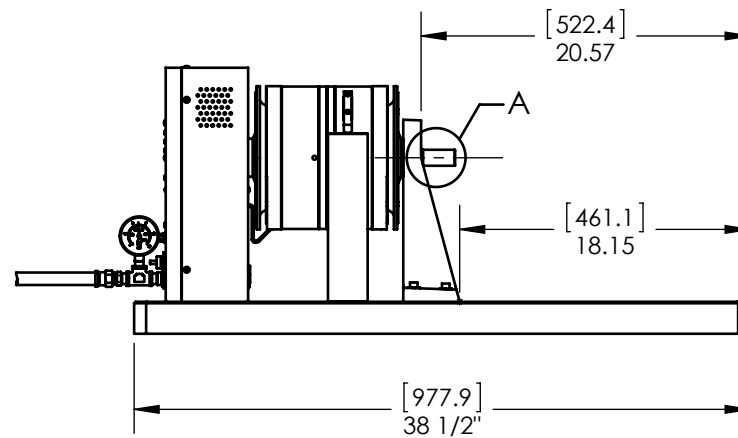
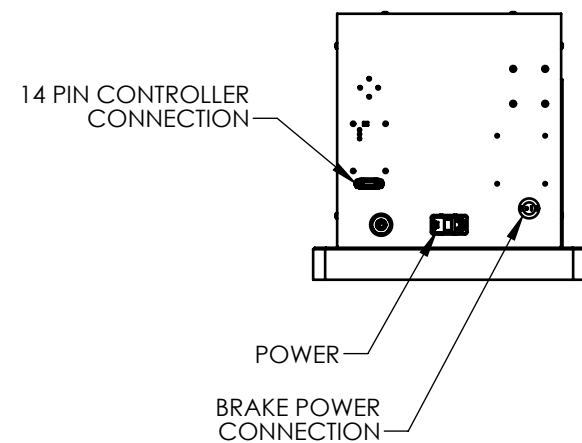
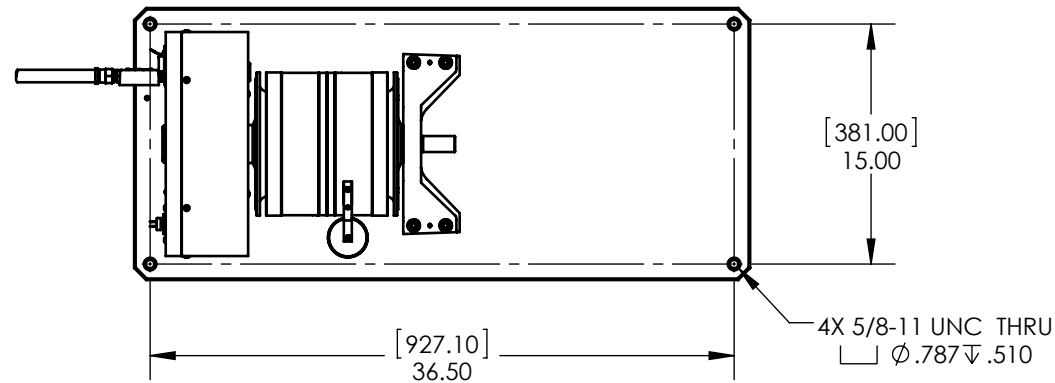
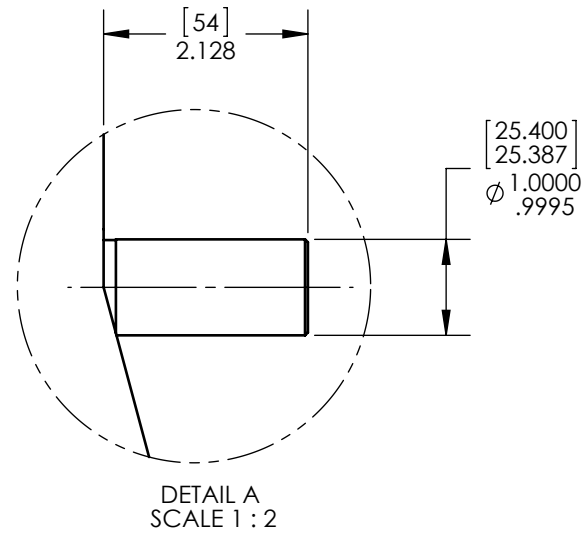



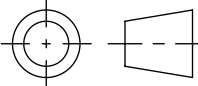
MODEL	TORQUE MEASURE UNIT CODE (-XXX)	STOCK CODE	MAXIMUM TORQUE RANGE	DRAG TORQUE DE-ENERGIZED AT 1000 RPM	NOMINAL INPUT INERTIA		MAXIMUM POWER		MAXIMUM SPEED (RPM)	COOLING
					(lb•ft•s ²)	(kg•m ²)	5-MINUTE (Watts)	CONTINUOUS (Watts)		
HD-805-XXX	5N	006783	28.00 N m	0.14 N m	8.81 x 10 ⁻³	1.19 x 10 ⁻²	5,300	3,000	12,000	COMPRESSED AIR* (7.5 CFM @ 7PSI)
	5NA	006784								
	6N	005987	250.0 lb in	0.8 lb in						
	6NA	005989								
	7N	005991	280.0 kg cm	1.5 kg cm						
	7NA	005993								
	8N	005995	28.00 N m	0.10 N m						
	8NA	005997								

* REQUIRES AIR COOLING PROVIDED BY CUSTOMER. REGULATOR AND FILTER PACKAGE IS PROVIDED AS STANDARD EQUIPMENT



NOTE: DIMENSIONS IN [] ARE mm.

INSTALLATION DRAWING

MATERIAL: -	DESIGN -	-	 MAGTROL INC. 70 GARDENVILLE PKWY, W. BUFFALO, NEW YORK 14224-1322
FINISH: -	DRAWN JEF	10/21/11	
THIRD ANGLE PROJECTION 	CHECKED AJC	10/25/11	TITLE: HD-805 DYNAMOMETER
THIS DRAWING AND SPECIFICATION CONTAINS PROPRIETARY INFORMATION TO MAGTROL INC. ANY DISCLOSURE OR REPRODUCTION OF THIS DOCUMENT WITHOUT WRITTEN AUTHORIZATION FROM MAGTROL INC. IS EXPRESSLY PROHIBITED	UNLESS OTHERWISE SPECIFIED: DIMENSIONS ARE IN MILLIMETERS DIAMETERS CONCENTRIC: .08 TIR FACES PERPENDICULAR: .08 INTERPRETATION PER ASME Y14.5M-1994 REMOVE ALL BURRS AND BREAK SHARP EDGES 0.13/0.25 X 45° INSIDE CORNERS TO BE R 0.5 MAX TOLERANCES: .X ± .25 X ± .4 .XX ± .13 X° ± 1° SURFACE FINISH 3.2 µm MAX		USED ON: - SIMILAR TO: - DWG NO: <div style="display: flex; justify-content: space-between;"> HD-805 REV A </div>
	SIZE B	SCALE 1:12	SHEET #