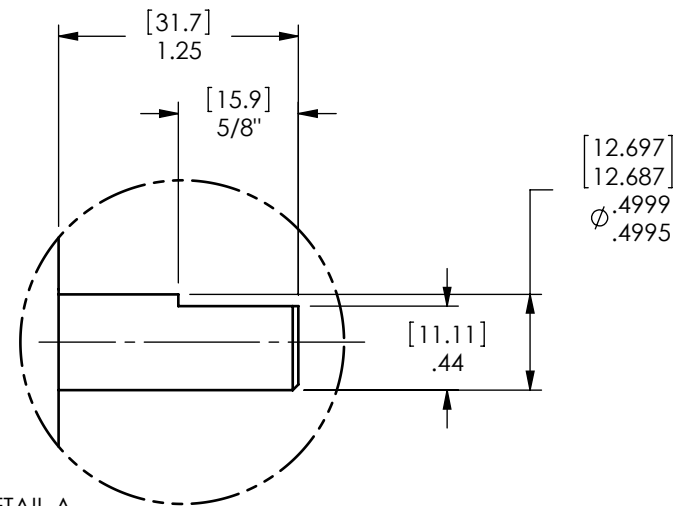
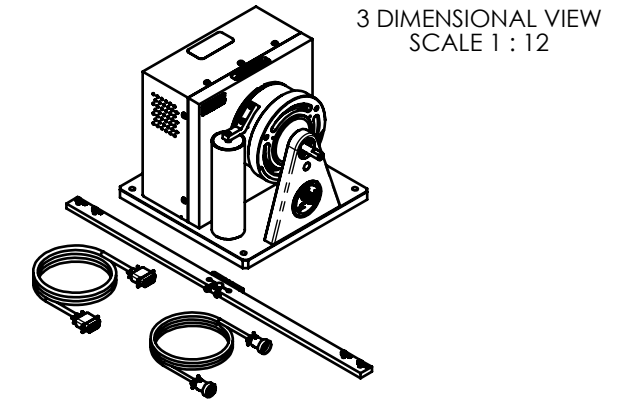
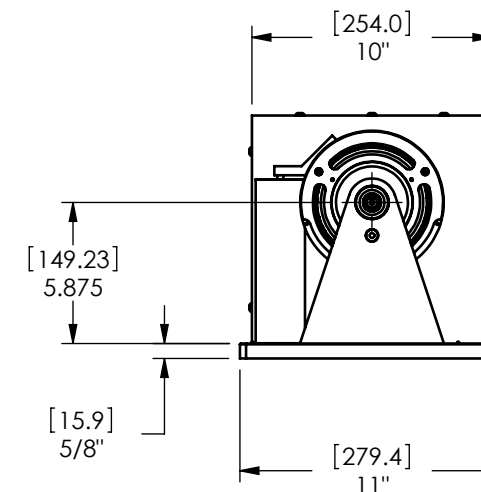
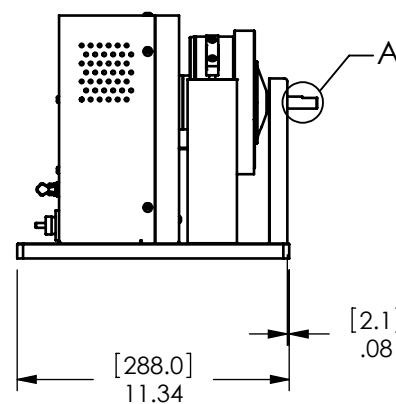
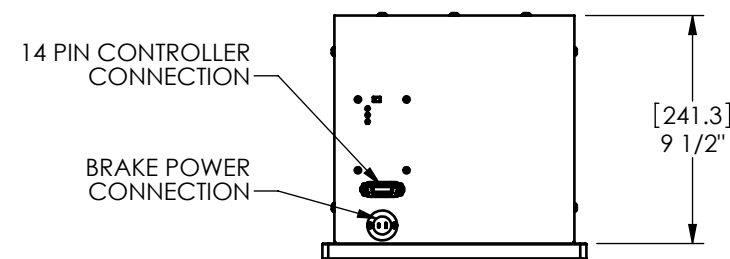
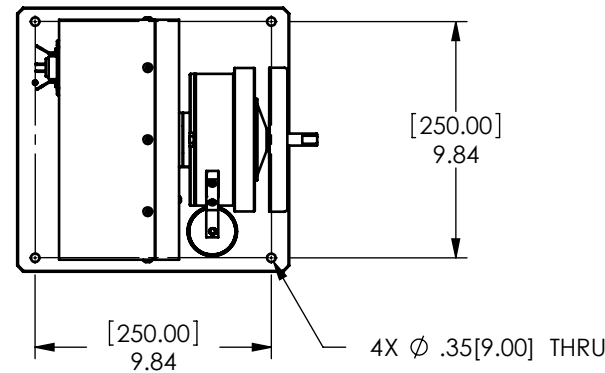


MODEL	TORQUE MEASURE UNIT CODE (-XXX)	STOCK CODE	MAXIMUM TORQUE RANGE	DRAG TORQUE DE-ENERGIZED AT 1000 RPM	NOMINAL INPUT INERTIA		MAXIMUM POWER		MAXIMUM SPEED (RPM)	COOLING METHOD
					(lb•ft•s <sup>2</sup> )	(kg•m <sup>2</sup> )	5-MINUTE (Watts)	CONTINUOUS (Watts)		
HD-700-XXX-0100	5N	006701	3.10 N m	0.013 N m	5.51 x 10 <sup>-4</sup>	7.47 x 10 <sup>-4</sup>	700	150	25,000	CONVECTION
	5NA	006702								
	6N	005926	440 oz in	2.0 oz in						
	6NA	005929								
	7N	005927	31.0 kg cm	0.14 kg cm						
	7NA	005930								
	8N	005928	3.10 N m	0.013 N m						
	8NA	005931								

**SOLID MODEL AVAILABLE**



DETAIL A  
SCALE 1 : 1



**INSTALLATION DRAWING**

MATERIAL:	DESIGN	-	-		<b>MAGTROL INC.</b> 70 GARDENVILLE PKWY, W. BUFFALO, NEW YORK 14224-1322
-	DRAWN	JEF	01/11/11		
FINISH:	CHECKED	AJC	02/21/11	TITLE: HD-700-0100 DYNAMOMETER	
-	THIRD ANGLE PROJECTION			UNLESS OTHERWISE SPECIFIED: DIMENSIONS ARE IN INCHES DIAMETERS CONCENTRIC: .003 TIR FACES PERPENDICULAR: .003 INTERPRETATION PER ASME Y14.5M-1994 REMOVE ALL BURRS AND BREAK SHARP EDGES .005/.010 X 45° INSIDE CORNERS TO BE R .02 MAX TOLERANCES: .XX ± .01 X/Y ± 1/64" .XXX ± .005 ANG ± 1° SURFACE FINISH 125 RMS MAX	
THIS DRAWING AND SPECIFICATION CONTAINS PROPRIETARY INFORMATION TO MAGTROL INC. ANY DISCLOSURE OR REPRODUCTION OF THIS DOCUMENT WITHOUT WRITTEN AUTHORIZATION FROM MAGTROL INC. IS EXPRESSLY PROHIBITED				DWG NO:	REV
				HD-700-0100	A
SIZE		SCALE			
B		1:8			