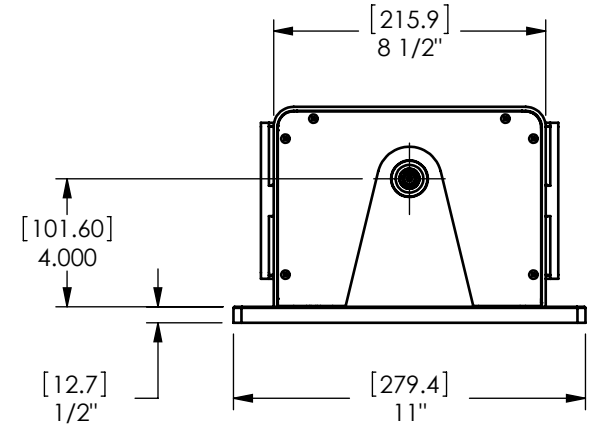
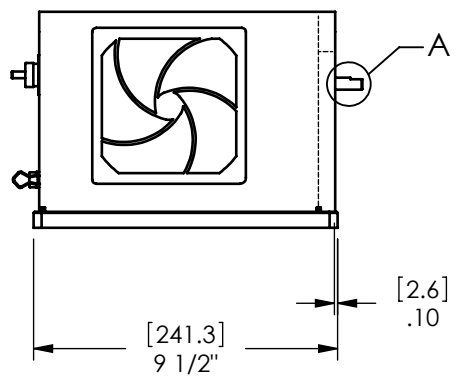
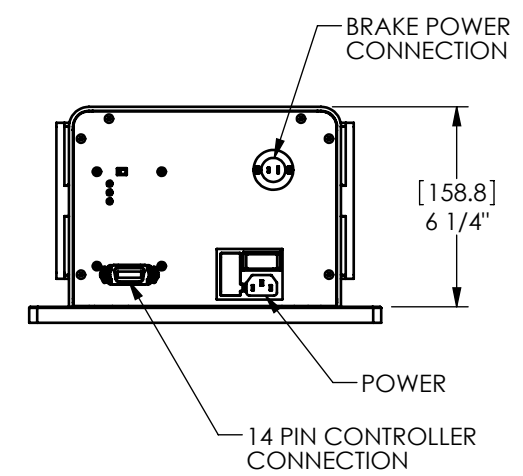
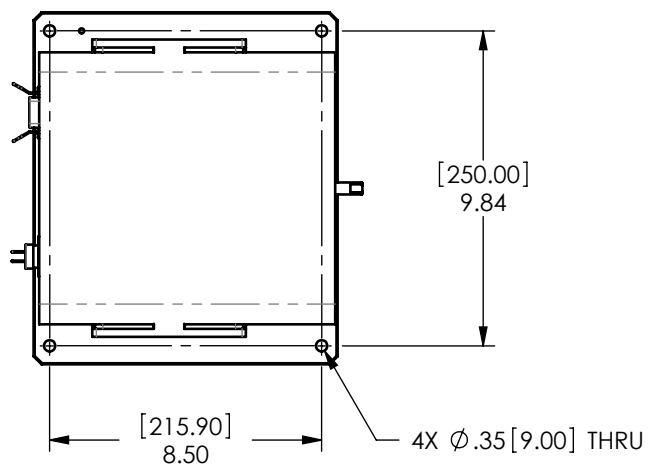
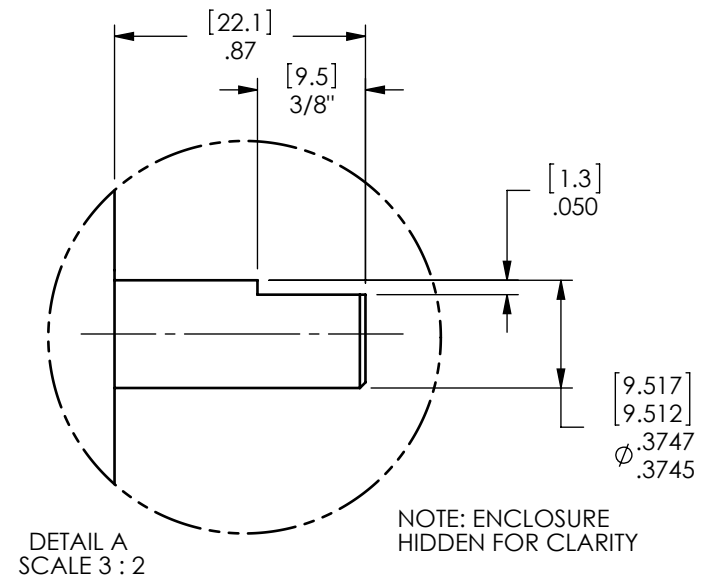
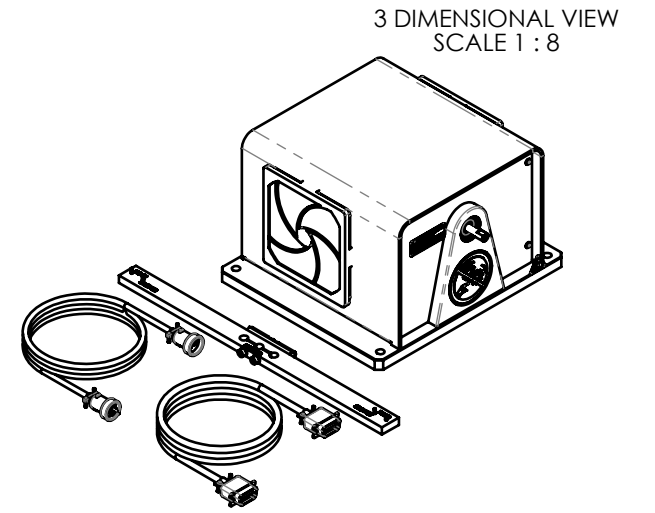



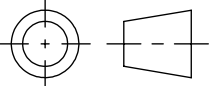
MODEL	TORQUE MEASURE UNIT CODE (-XXX)	STOCK CODE	MAXIMUM TORQUE RANGE	DRAG TORQUE DE-ENERGIZED AT 1000 RPM	NOMINAL INPUT INERTIA		MAXIMUM POWER		MAXIMUM SPEED (RPM)	COOLING	FAN DESCRIPTION
					(lb•ft•s ²)	(kg•m ²)	5-MINUTE (Watts)	CONTINUOUS (Watts)			
HD-505-XXX-0100	5N	006646	1.700 N m	10 mN m	1.61 x 10 ⁻⁴	2.18 x 10 ⁻⁴	800	160	25,000	CONVECTION	115V
	5NA	006647									220V
	6N	005295	240.0 oz in	1.0 oz in							115V
	6NA	005290									220V
	7N	005291	17.0 kg cm	0.1 kg cm							115V
	7NA	005291									220V
	8N	005293	1700 mN m	10 mN m							115V
	8NA	005294									220V

SOLID MODEL AVAILABLE



NOTE: DIMENSIONS IN [] ARE MILLIMETERS.

INSTALLATION DRAWING

MATERIAL:	-	DESIGN	-	-	 MAGTROL INC. 70 GARDENVILLE PKWY, W. BUFFALO, NEW YORK 14224-1322	
FINISH:	-	DRAWN	JEF	01/06/11		
THIRD ANGLE PROJECTION		CHECKED	AJC	01/14/11	TITLE:	
THIS DRAWING AND SPECIFICATION CONTAINS PROPRIETARY INFORMATION TO MAGTROL INC. ANY DISCLOSURE OR REPRODUCTION OF THIS DOCUMENT WITHOUT WRITTEN AUTHORIZATION FROM MAGTROL INC. IS EXPRESSLY PROHIBITED	UNLESS OTHERWISE SPECIFIED: DIMENSIONS ARE IN INCHES DIAMETERS CONCENTRIC: .003 TIR FACES PERPENDICULAR: .003 INTERPRETATION PER ASME Y14.5M-1994 REMOVE ALL BURRS AND BREAK SHARP EDGES .005/.010 X 45° INSIDE CORNERS TO BE R .02 MAX TOLERANCES: .XX ± .01 X/Y ± 1/64" .XXX ± .005 ANG ± 1° SURFACE FINISH 125 RMS MAX				TITLE:	
					USED ON: - SIMILAR TO: - DWG NO:	HD-505 SHORT BASE DYNO HD-505-0100
					SIZE B	SCALE 1:6