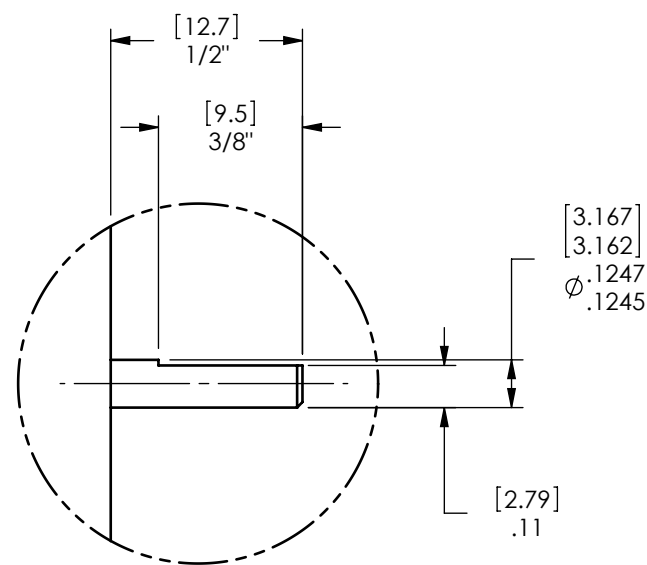
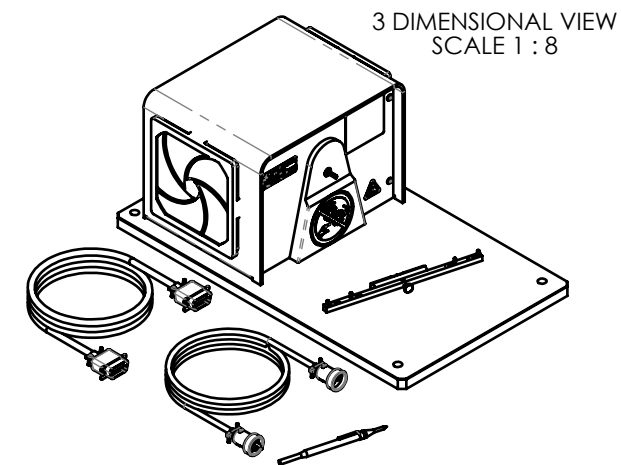


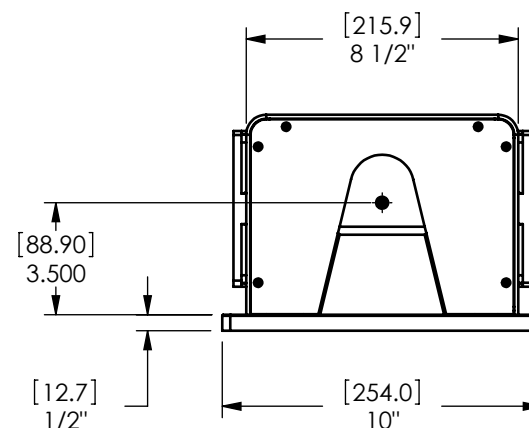
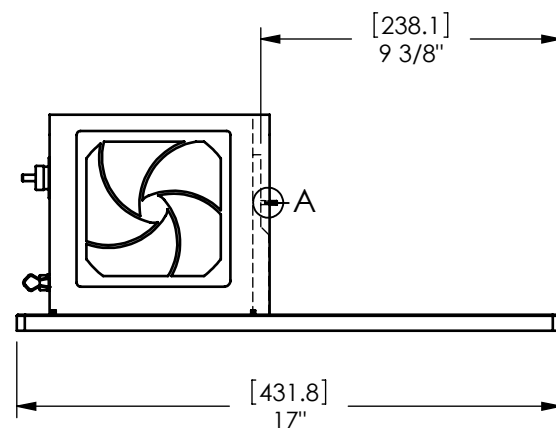
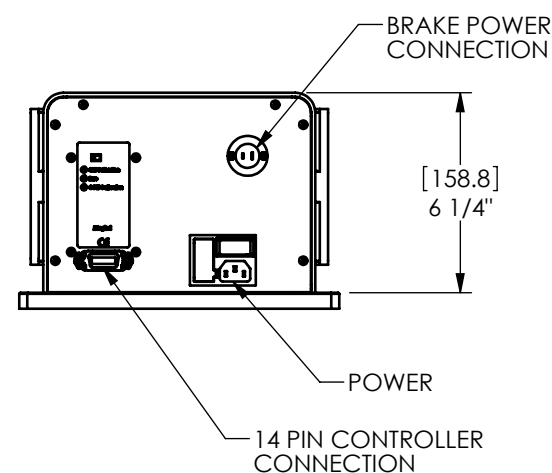
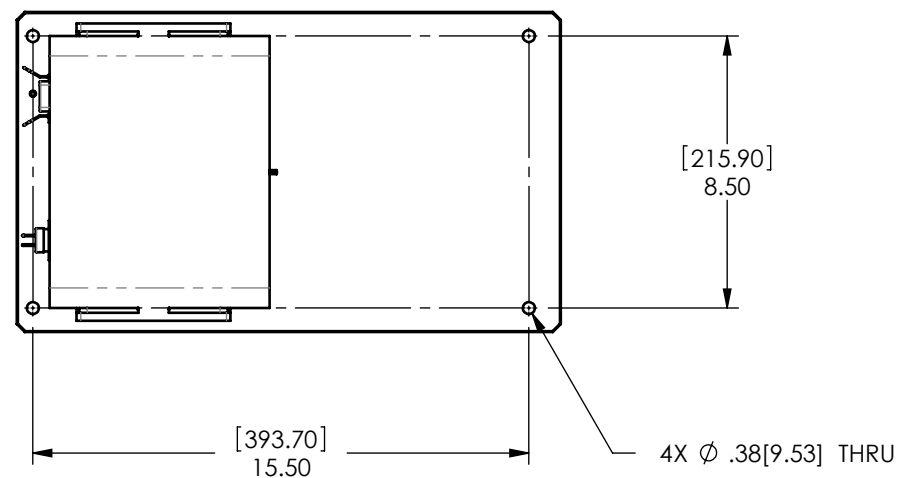
MODEL	TORQUE MEASURE UNIT CODE (-XXX)	STOCK CODE	MAXIMUM TORQUE RANGE	DRAG TORQUE DE-ENERGIZED AT 1000 RPM	NOMINAL INPUT INERTIA		MAXIMUM POWER		MAXIMUM SPEED (RPM)	COOLING	FAN DESCRIPTION
					( lb•ft•s <sup>2</sup> )	( kg•m <sup>2</sup> )	5-MINUTE (Watts)	CONTINUOUS (Watts)			
HD-106-XXX	5N	006625	0.018 N m	0.056 mN m	7.04 x 10 <sup>-7</sup>	9.54 x 10 <sup>-7</sup>	35	7	30,000	CONVECTION	115V
	5NA	006626									220V
	6N	004007	2.50 oz in	0.008 oz in							115V
	6NA	004010									220V
	7N	004008	180.0 g cm	0.57 g cm							115V
	7NA	004011									220V
	8N	004009	18.00 mN m	0.056 mN m							115V
	8NA	004012									220V

**SOLID MODEL AVAILABLE**



DETAIL A  
SCALE 2 : 1

NOTE: ENCLOSURE  
HIDDEN FOR CLARITY



NOTE: DIMENSIONS IN [ ] ARE MILLIMETERS.

**INSTALLATION DRAWING**

MATERIAL:	DESIGN	-	-		<b>MAGTROL INC.</b> 70 GARDENVILLE PKWY, W. BUFFALO, NEW YORK 14224-1322
	DRAWN	AJC	07/18/02		
FINISH:	CHECKED	DTW	07/18/02	TITLE: HD-106 DYNAMOMETER	
THIRD ANGLE PROJECTION	UNLESS OTHERWISE SPECIFIED: DIMENSIONS ARE IN INCHES DIAMETERS CONCENTRIC: .003 TIR FACES PERPENDICULAR: .003 INTERPRETATION PER ASME Y14.5M-1994 REMOVE ALL BURRS AND BREAK SHARP EDGES .005/.010 X 45° INSIDE CORNERS TO BE R .02 MAX TOLERANCES: .XX ± .01 X/Y ± 1/64" .XXX ± .005 ANG ± 1° SURFACE FINISH 125 RMS MAX			USED ON: -	SIMILAR TO: -
THIS DRAWING AND SPECIFICATION CONTAINS PROPRIETARY INFORMATION TO MAGTROL INC. ANY DISCLOSURE OR REPRODUCTION OF THIS DOCUMENT WITHOUT WRITTEN AUTHORIZATION FROM MAGTROL INC. IS EXPRESSLY PROHIBITED				DWG NO:	REV
				HD-106	B
				SIZE	SCALE
				B	1:6