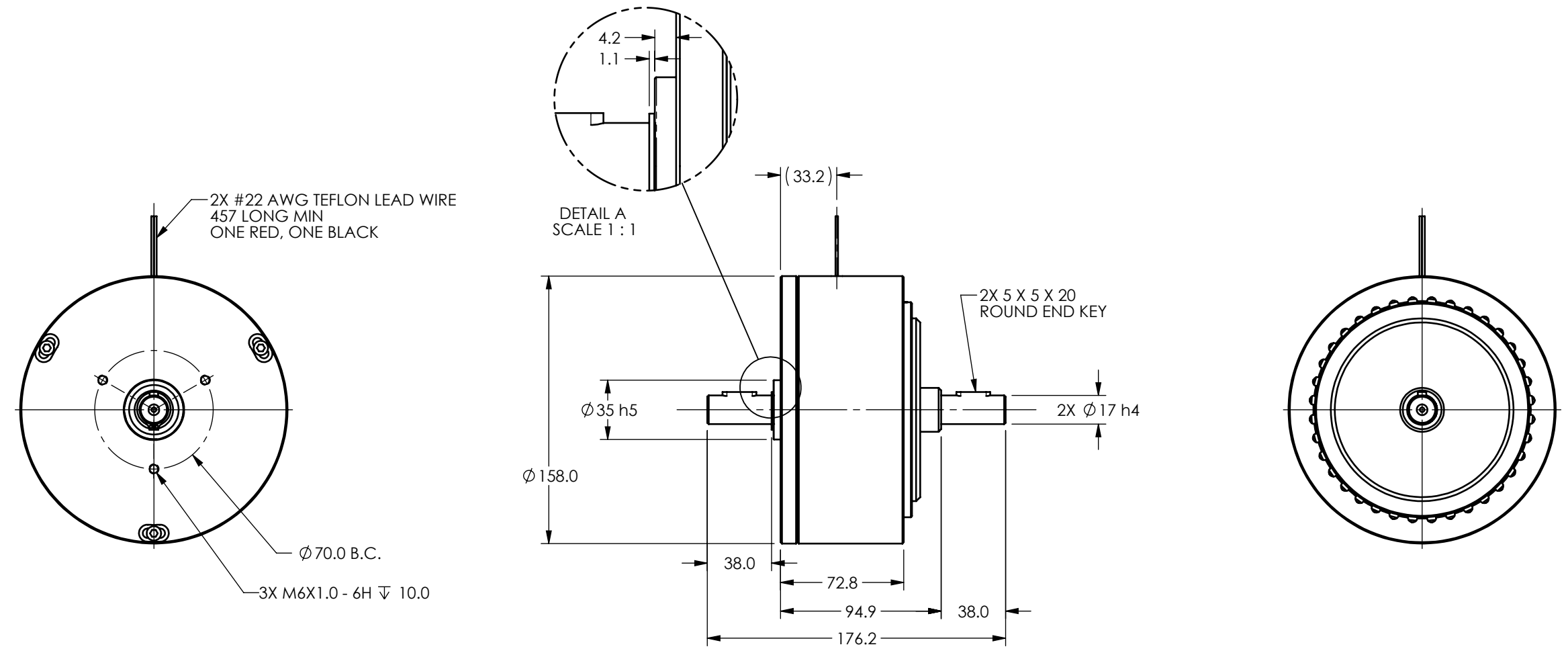


MODEL	COIL NUMBER (-X)	STOCK CODE	MINIMUM TORQUE AT RATED CURRENT (Nm)	RATED CURRENT (mA)	RESISTANCE ±10% @ 25°C (ohms)	VOLTAGE (Vdc)	NOMINAL POWER (watts)	MAXIMUM SPEED (RPM)	KINETIC POWER RATINGS		DE-ENERGIZED DRAG TORQUE @ 1000 RPM (Nm)	EXTERNAL INERTIA (kg cm s <sup>2</sup> )	TORQUE TO INERTIA RATIO (rad/s <sup>2</sup> )
									5 MINUTE (watts)	CONTINUOUS (watts)			
MHB-750M-X	-1 (90 Vdc)	005463	5.0	107	845	90	9.6	7,000	1000	200	5.0 X 10 <sup>-2</sup>	1.45 X 10 <sup>1</sup>	3,450
	-2 (24 Vdc)	004589		383	60	23	8.8						
	-3 (12 Vdc)	005464		690	20	13.8	9.5						

**SOLID MODEL AVAILABLE**

UNLESS OTHERWISE SPECIFIED, BRAKE IS TO BE MATCHED AT **RATED TORQUE @ RATED CURRENT**



2X #22 AWG TEFLON LEAD WIRE  
457 LONG MIN  
ONE RED, ONE BLACK


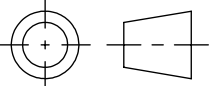
DETAIL A  
SCALE 1 : 1

2X 5 X 5 X 20  
ROUND END KEY

Ø 70.0 B.C.  
3X M6X1.0 - 6H ∇ 10.0

3 DIMENSIONAL VIEW  
SCALE 1 : 3

**INSTALLATION DRAWING**

MATERIAL:	DESIGN	-	-	 <b>MAGTROL INC.</b> 70 GARDENVILLE PKWY, W. BUFFALO, NEW YORK 14224-1322
	DRAWN	AJC	11/17/04	
FINISH:	CHECKED	DTW	11/17/04	TITLE:
				HYSTERESIS BRAKE, MATCHED
THIRD ANGLE PROJECTION				USED ON: -
THIS DRAWING AND SPECIFICATION CONTAINS PROPRIETARY INFORMATION TO MAGTROL INC. ANY DISCLOSURE OR REPRODUCTION OF THIS DOCUMENT WITHOUT WRITTEN AUTHORIZATION FROM MAGTROL INC. IS EXPRESSLY PROHIBITED	UNLESS OTHERWISE SPECIFIED: DIMENSIONS ARE IN MILLIMETERS DIAMETERS CONCENTRIC: 0.08 TIR FACES PERPENDICULAR: 0.08 INTERPRETATION PER ASME Y14.5M-1994 REMOVE ALL BURRS AND BREAK SHARP EDGES 0.13/0.25 X 45° INSIDE CORNERS TO BE R 0.5 MAX TOLERANCES: X ± 0.4                      X.XX ± 0.13 X.X ± 0.25                ANG ± 1° SURFACE FINISH 3.2 µm MAX			DWG NO:
				MHB-750M
				REV A
		SIZE	SCALE	
		B	1:3	