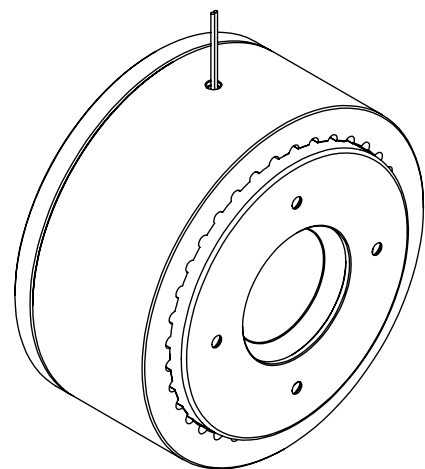
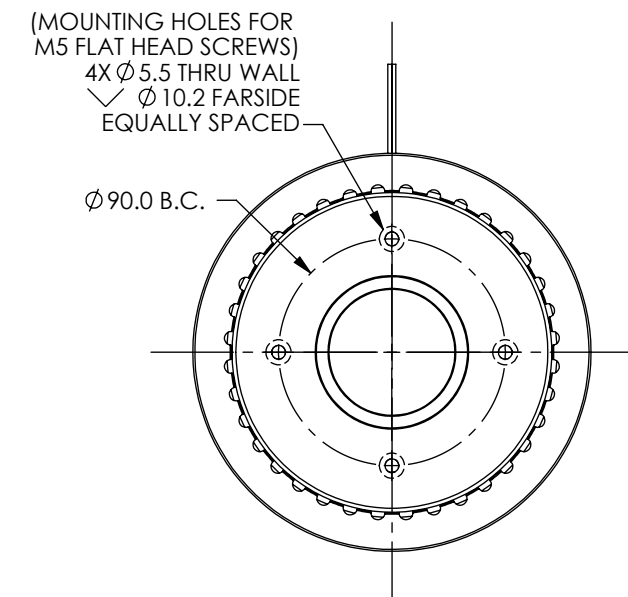
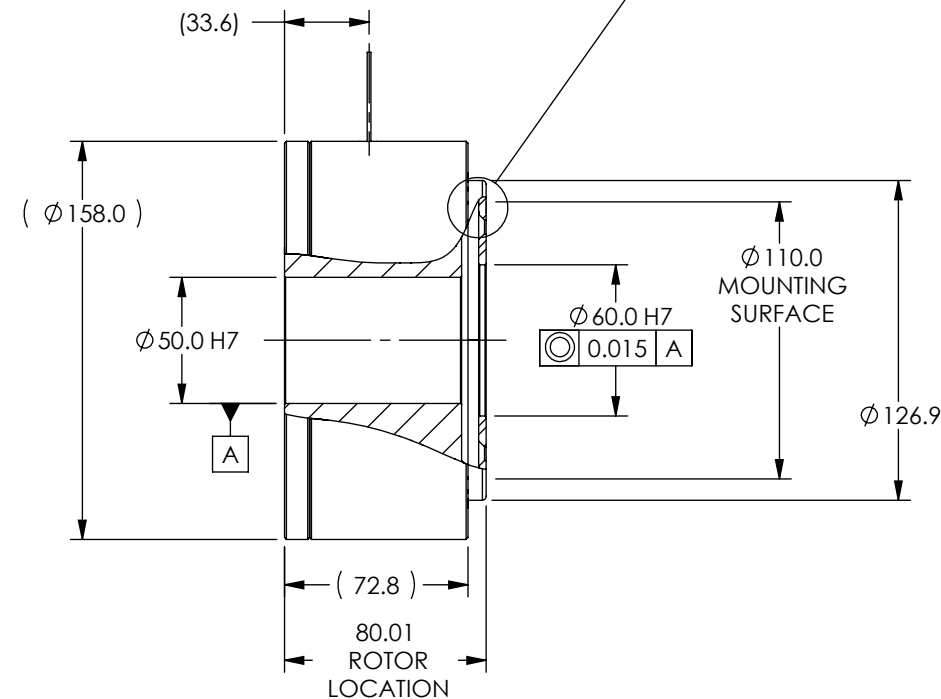
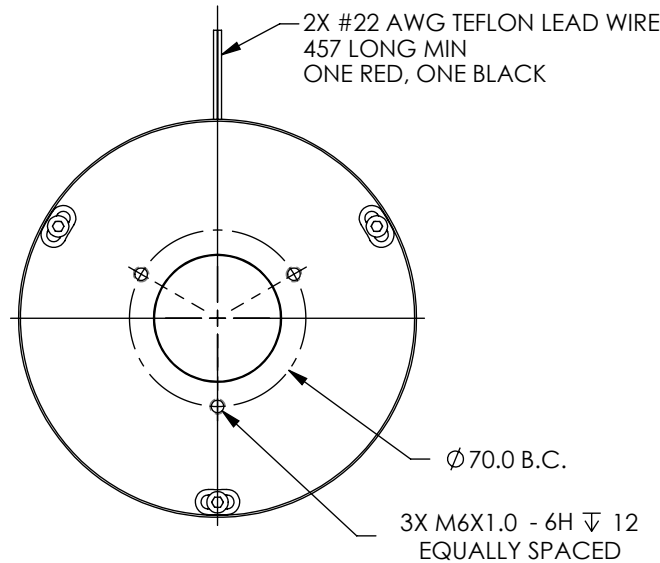
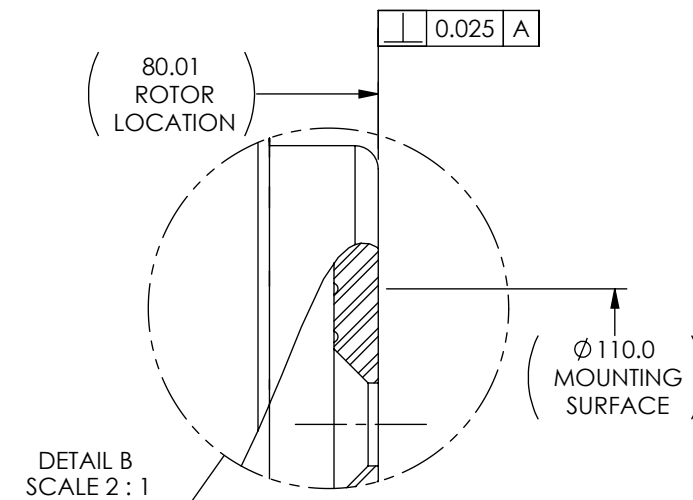


SOLID MODEL AVAILABLE


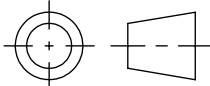
MODEL	COIL NUMBER	STOCK CODE	MINIMUM TORQUE AT RATED CURRENT (Nm)	RATED CURRENT (mA)	RESISTANCE ±10% @ 25°C (ohms)	VOLTAGE (Vdc)	NOMINAL POWER (watts)	MAXIMUM SPEED (RPM)	KINETIC POWER RATINGS	
									5 MINUTE (watts)	CONTINUOUS (watts)
LB-750M	-1 (90 Vdc)	005151	5.0	107	85	90	9.6	2,000	1,000	200
	-2 (24 Vdc)	005036		383	60	23	8.8			
	-3 (12 Vdc)	005466		690	20	13.8	9.5			



3 DIMENSIONAL VIEW
SCALE 1 : 3

ALIGNMENT NOTES:

- THE POLE/CASE ASSEMBLY AND THE ROTOR ARE SHIPPED AS SEPARATE ITEMS.
- IT IS THE RESPONSIBILITY OF THE MACHINE DESIGNER TO ASSURE PROPER ALIGNMENT OF THE MATING BRAKE PARTS IN THE FINAL ASSEMBLY.
- THESE COMPONENTS MUST BE MOUNTED SUCH THAT THE CONCENTRICITY AND PERPENDICULARITY BETWEEN THE ROTOR AND POLE DOES NOT EXCEED THE SPECIFIED TOLERANCES.

MATERIAL:	DESIGN	AJC	02/28/03	 MAGTROL INC. 70 GARDENVILLE PKWY, W. BUFFALO, NEW YORK 14224-1322
	DRAWN	AJC	02/28/03	
FINISH:	CHECKED	DTW	02/28/03	TITLE
	UNLESS OTHERWISE SPECIFIED: DIMENSIONS ARE IN MILLIMETERS, DIAMETERS CONCENTRIC: .08 TIR, FACES PERPENDICULAR: .08 INTERPRETATION PER ASME Y14.5M-1994 REMOVE ALL BURRS AND BREAK SHARP EDGES .13/.25 X 45°, ALL INSIDE CORNERS TO BE .5 R MAX. TOLERANCES: X ± .4 .XX ± .13 .X ± .25 ANG. ± 1° SURFACE FINISH 3.2 µm MAX. U.O.S.			LB-750M LARGE BORE BRAKE
THIRD ANGLE PROJECTION				USED ON: - SIMILAR TO: -
THIS DRAWING AND SPECIFICATION CONTAINS PROPRIETARY INFORMATION TO MAGTROL INC. ANY DISCLOSURE OR REPRODUCTION OF THIS DOCUMENT WITHOUT WRITTEN AUTHORIZATION FROM MAGTROL INC. IS EXPRESSLY PROHIBITED	DWG. NO.		LB-750M	REV D
	SIZE B	SCALE 1:3	SHEET # 2 OF 2	