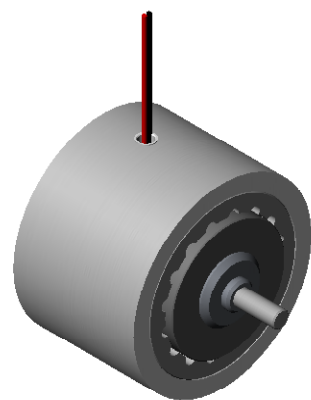
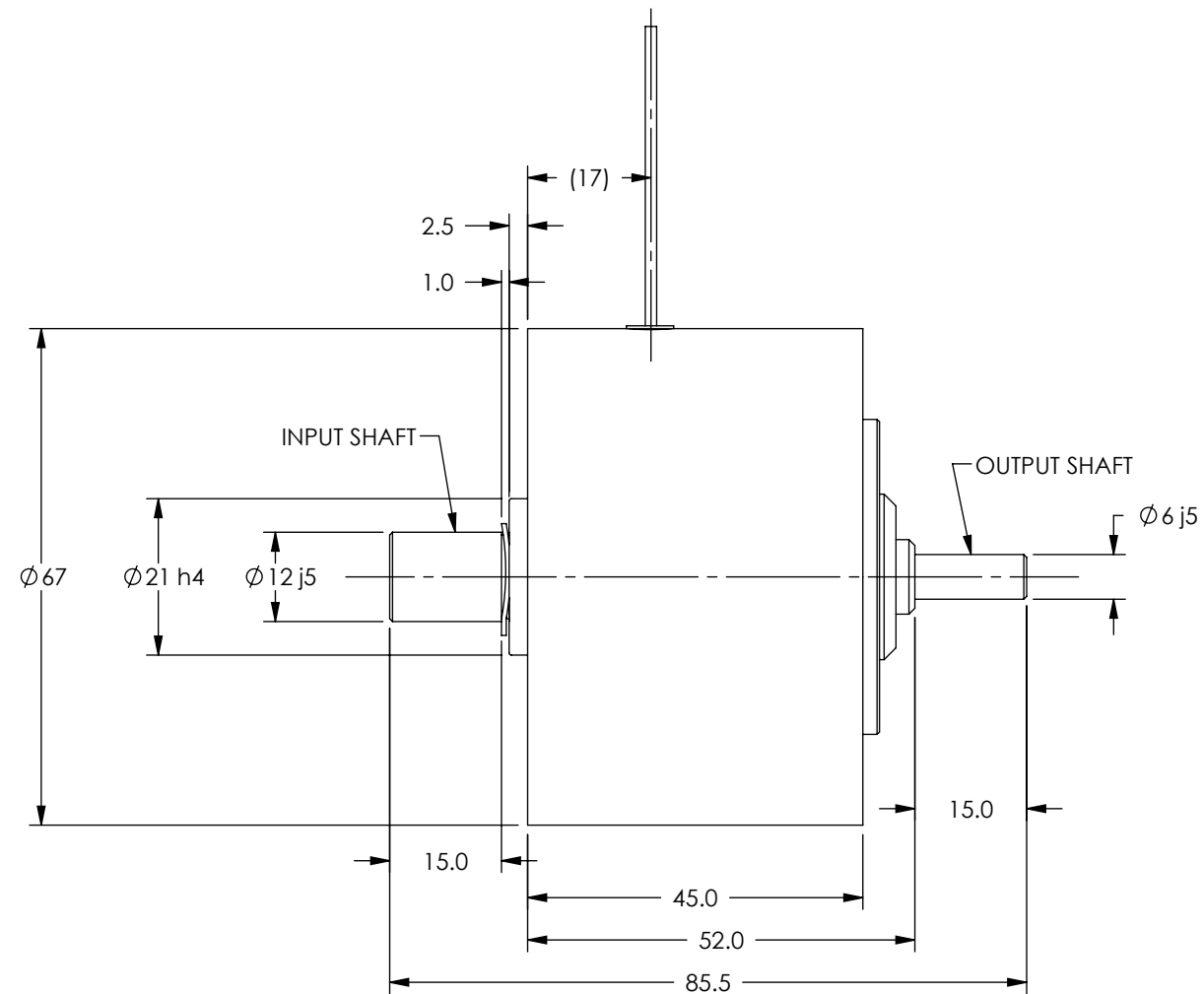
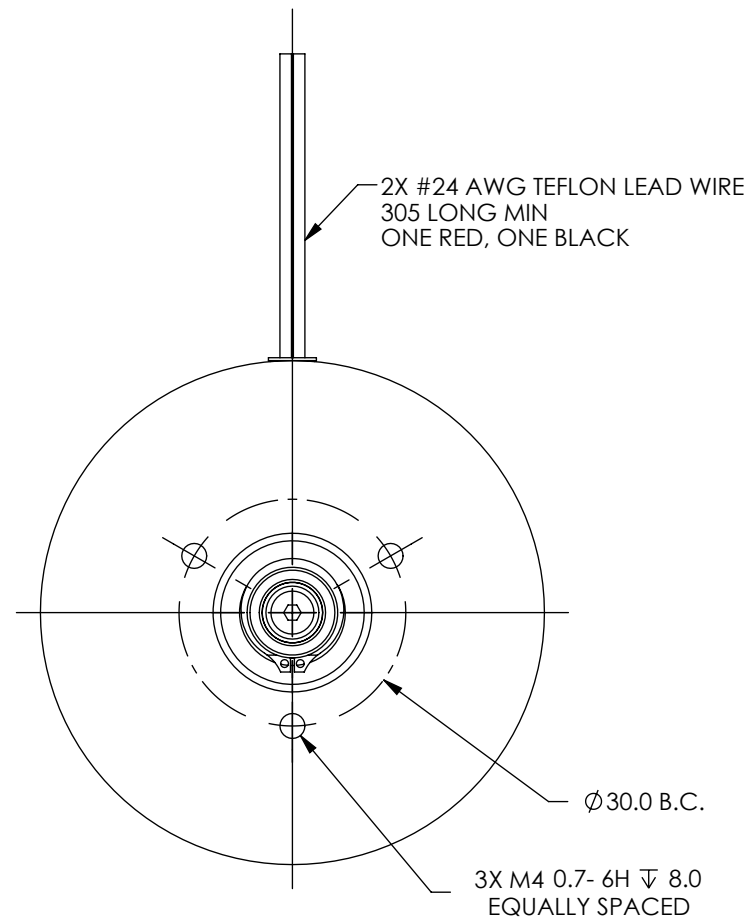

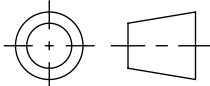


SOLID MODEL AVAILABLE

MODEL	COIL NUMBER	STOCK CODE	MINIMUM TORQUE AT RATED CURRENT (mNm)	RATED CURRENT (mA)	RESISTANCE ±10% @ 25°C (ohms)	VOLTAGE (Vdc)	NOMINAL POWER (watts)	MAXIMUM SPEED (RPM)	KINETIC POWER RATINGS		INPUT SHAFT DE-ENERGIZED DRAG TORQUE @ 1000 RPM (mNm)	OUTPUT SHAFT DE-ENERGIZED DRAG TORQUE @ 1000 RPM (mNm)	INPUT SHAFT INERTIA (kg cm ²)	OUTPUT SHAFT INERTIA (kg cm ²)
									5 MINUTE (watts)	CONTINUOUS (watts)				
HCF-32M	-1 (90 Vdc)	006177	226	71	1500	106	7.56	3,600	90	25	-		.984	.089
	-2 (24 Vdc)	005483	226	332	72.5	24	7.99							
	-3 (12 Vdc)	006125	226	667	18	12	8.01							



3 DIMENSIONAL VIEW
SCALE 1 : 2

MATERIAL:	DESIGN	AJC	12/22/04	 MAGTROL INC. 70 GARDENVILLE PKWY, W. BUFFALO, NEW YORK 14224-1322
FINISH:	DRAWN	AJC	12/22/04	
	CHECKED	DTW	01/05/05	
THIRD ANGLE PROJECTION				TITLE HCF-32M HYSTERESIS CLUTCH
UNLESS OTHERWISE SPECIFIED: DIMENSIONS ARE IN MILLIMETERS, DIAMETERS CONCENTRIC: .08 TIR, FACES PERPENDICULAR: .08 INTERPRETATION PER ASME Y14.5M-1994 REMOVE ALL BURRS AND BREAK SHARP EDGES .13/.25 X 45°, ALL INSIDE CORNERS TO BE .5 R MAX. TOLERANCES: X ± .4 .XX ± .13 .X ± .25 ANG. ± 1° SURFACE FINISH 3.2 µm MAX. U.O.S.				
THIS DRAWING AND SPECIFICATION CONTAINS PROPRIETARY INFORMATION TO MAGTROL INC. ANY DISCLOSURE OR REPRODUCTION OF THIS DOCUMENT WITHOUT WRITTEN AUTHORIZATION FROM MAGTROL INC. IS EXPRESSLY PROHIBITED				REV C
SIZE B		SCALE 1:1	SHEET # 3 OF 3	