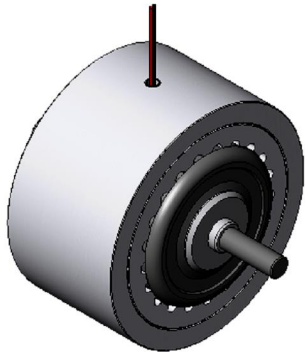
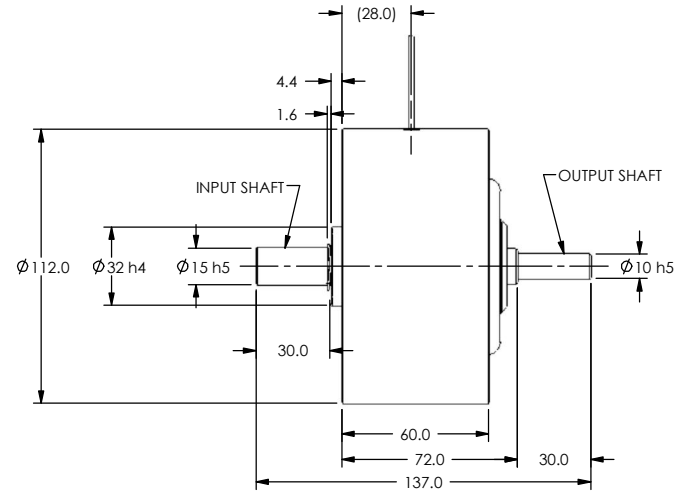
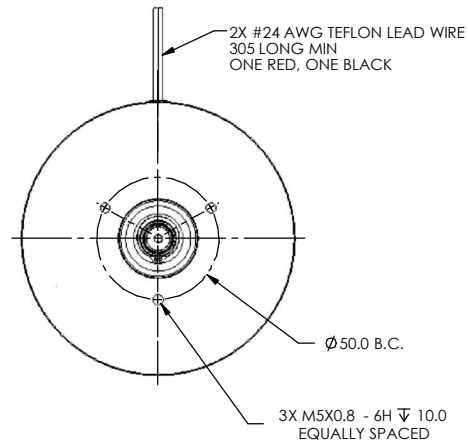

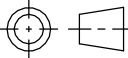


SOLID MODEL AVAILABLE

MODEL	COIL NUMBER	STOCK CODE	MINIMUM TORQUE AT RATED CURRENT (Nm)	RATED CURRENT (mA)	RESISTANCE ±10% @ 25°C (ohms)	VOLTAGE (Vdc)	NOMINAL POWER (watts)	MAXIMUM SPEED (RPM)	KINETIC POWER RATINGS		INPUT SHAFT DE-ENERGIZED DRAG TORQUE @ 1000 RPM (mNm)	OUTPUT SHAFT DE-ENERGIZED DRAG TORQUE @ 1000 RPM (mNm)	INPUT SHAFT INERTIA (kg cm <sup>2</sup> )	OUTPUT SHAFT INERTIA (kg cm <sup>2</sup> )
									5 MINUTE (watts)	CONTINUOUS (watts)				
HCF-120M	-1 (90 Vdc)	-	.85	-	-	-	-	3,600	300	75	-	-	9.49	.910
	-2 (24 Vdc)	005798	.85	200	120	24	4.8							
	-3 (12 Vdc)	-	.85	-	-	-	-							



3 DIMENSIONAL VIEW  
SCALE 1 : 2

MATERIAL: -	DESIGN	AJC	08/28/06		<b>MAGTROL INC.</b>	
	DRAWN	AJC	08/28/06		70 GARDENVILLE PKWY, W. BUFFALO, NEW YORK 14224-1322	
FINISH: -	CHECKED	-	-	TITLE		
	UNLESS OTHERWISE SPECIFIED: DIMENSIONS ARE IN MILLIMETERS, DIAMETERS CONCENTRIC: .08 TIR, FACES PERPENDICULAR: .08 INTERPRETATION PER ASME Y14.5M-1994 REMOVE ALL BURRS AND BREAK SHARP EDGES .13/.25 X 45°, ALL INSIDE CORNERS TO BE .5 R MAX. TOLERANCES: X ± .4                   XX ± .13 X ± .25   ANG. ± 1° SURFACE FINISH 3.2 µm MAX. U.O.S.			HCF-120M HYSTERESIS CLUTCH		
THIRD ANGLE PROJECTION				DWG. NO.	HCF-120M	
THIS DRAWING AND SPECIFICATION CONTAINS PROPRIETARY INFORMATION TO MAGTROL INC. ANY DISCLOSURE OR REPRODUCTION OF THIS DOCUMENT WITHOUT WRITTEN AUTHORIZATION FROM MAGTROL INC. IS EXPRESSLY PROHIBITED				REV	B	
SIZE	SCALE	SHEET #		3 OF 3		
B	1:2					